



**Guide Price**  
**£350,000**

**Freehold**

3x  1x  1x 

**Ryecroft, Haywards  
Heath, West Sussex,  
RH16**

**OVER 60?**

Secure this property  
for up to **59% less!**

**cubitt & west**  
Helping you move forwards



## Main features

- Cul-de-sac location
- Short walk to train station & town centre
- Secluded rear garden
- Allocated parking space
- Ideal for first time buyer

## Accommodation

### GROUND FLOOR

Hallway  
 Lounge: 14'11 x 13'10 (4.55m x 4.22m)  
 Dining Area: 11'3 x 6'3 (3.43m x 1.91m)  
 Kitchen: 9'3 x 7'0 (2.82m x 2.14m)

### FIRST FLOOR

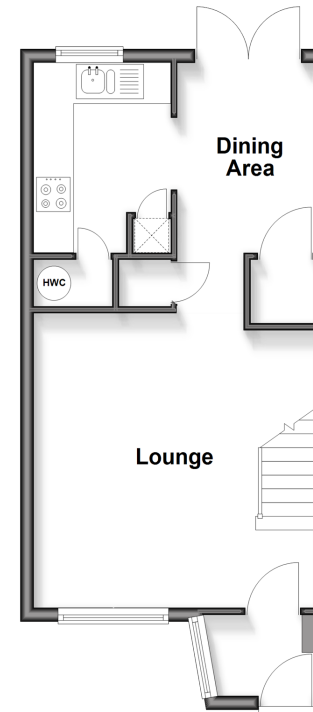
Landing  
 Bedroom 1: 13'10 x 8'10 (4.22m x 2.69m)  
 Bedroom 2: 12'3 x 7'6 (3.74m x 2.29m)  
 Bedroom 3: 9'4 x 5'10 (2.85m x 1.78m)  
 Bathroom

### OUTSIDE

Front & Rear Garden  
 Allocated Parking

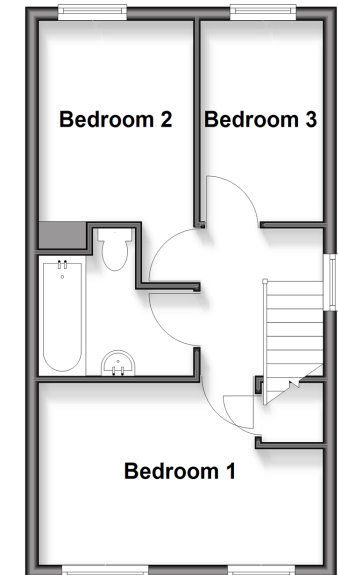
### Ground Floor

Approx. 35.5 sq. metres (382.0 sq. feet)



### First Floor

Approx. 33.4 sq. metres (359.8 sq. feet)



**Unable to display material information. Please check with the branch for material information details for this property**



90115RVP/20260424/DDA/DD