



Tremadoc Road, SW4

£600 Per week

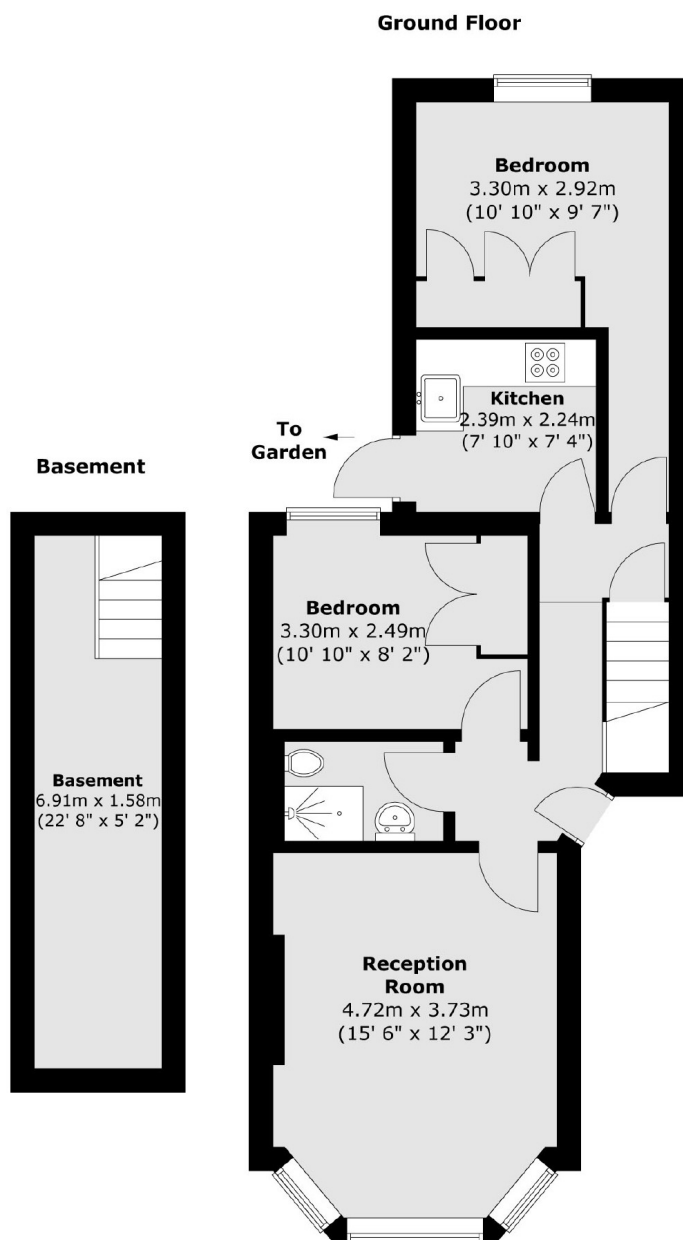
A ground floor apartment that sells itself offering a large reception room with period features, separate kitchen, two double bedrooms and a private rear garden.

Located just off of Clapham High Street, Tremadoc Road is a firm favourite of young professionals as it provides easy access to one of South London's most popular social hubs.

Features

- Private Garden
- Ground Floor Flat
- Two Double Bedrooms
- Prime Location
- Newly Refurbished
- Modern Kitchen

Tremadoc Road, London, SW4



Total area (approx.) : 66.6 sq. m (717 sq. ft)