



Bevill Square

Salford



In Excess of £190,000

# Bevill Square

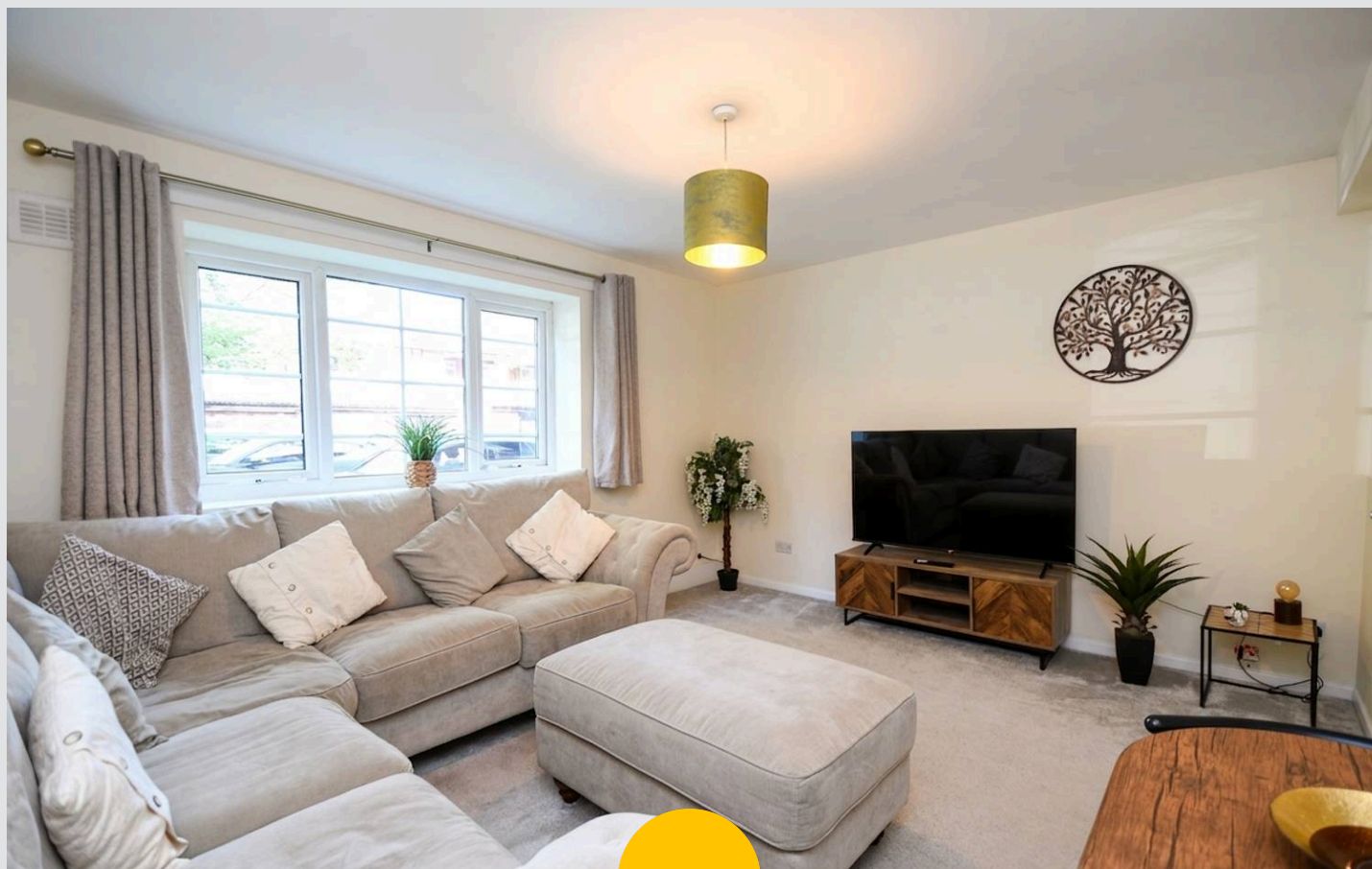
Salford

Introducing this beautifully presented ground floor, two bedroom apartment within walking distance of Manchester City Centre, and coming to the market **CHAIN FREE!**

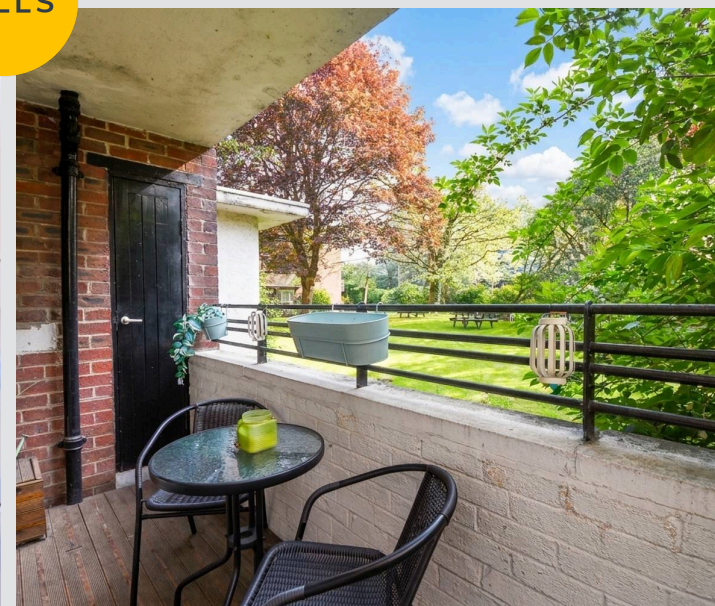
Council Tax band: A

Tenure: Leasehold

- Beautifully Presented, Two Bedroom Ground Floor Apartment Coming To The Market **CHAIN FREE!**
- Recently Tastefully Decorated Throughout and Repainted within the Last Year
- Modern Fitted Kitchen and a Balcony Area
- Spacious Lounge Diner
- Two double bedrooms
- Spacious, Contemporary Three-Piece Bathroom Suite
- Within Walking Distance of Manchester City Centre, with a Range of Amenities including Bars, Shops and Restaurants
- Set Within Well-Maintained Communal Gardens, Featuring Laid-to-Lawn Grass, Mature Trees and Shrubbery
- Benefits from an Allocated Parking Space
- Ideal First Time Home or Investment, Viewing is Highly Recommended!



HILLS



**Entrance Hallway**

**Lounge**

13' 11" x 11' 11" (4.25m x 3.63m)

**Kitchen**

9' 4" x 8' 0" (2.84m x 2.44m)

**Bedroom One**

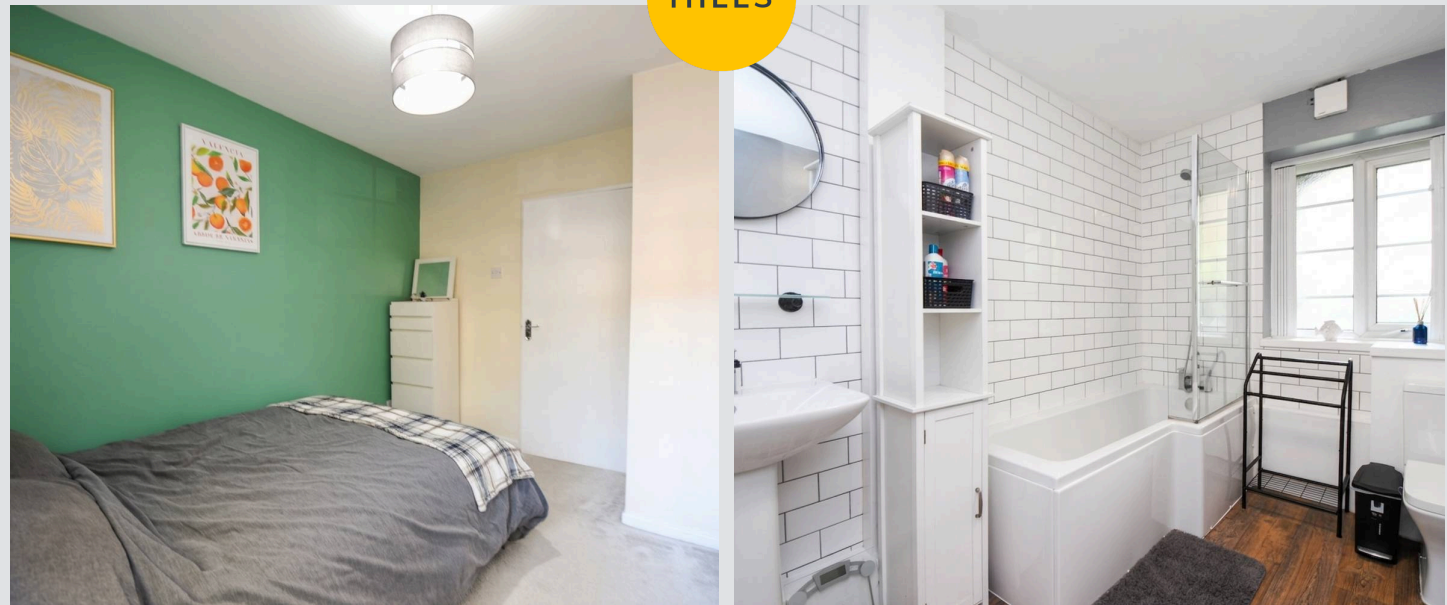
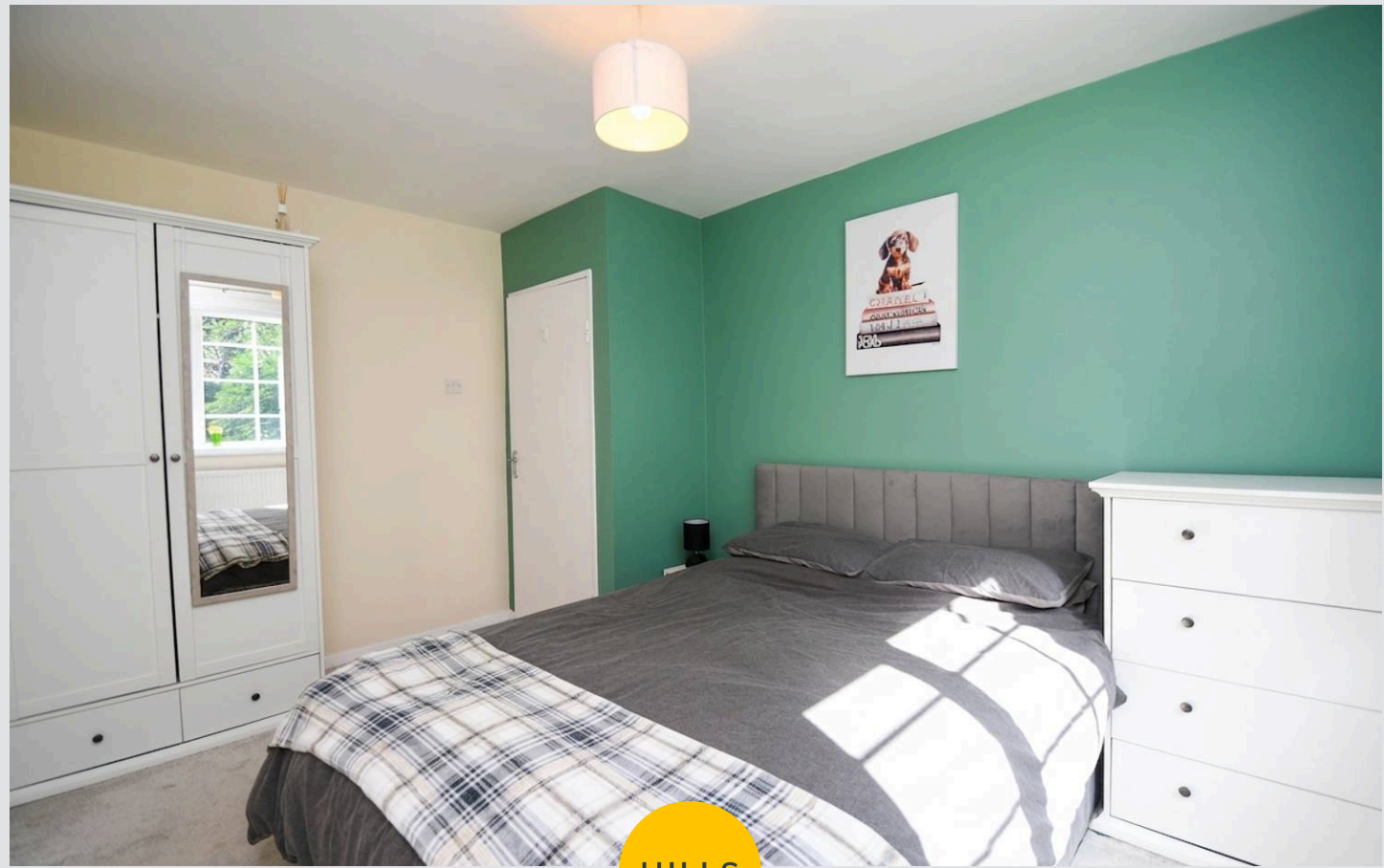
12' 10" x 9' 7" (3.91m x 2.92m)

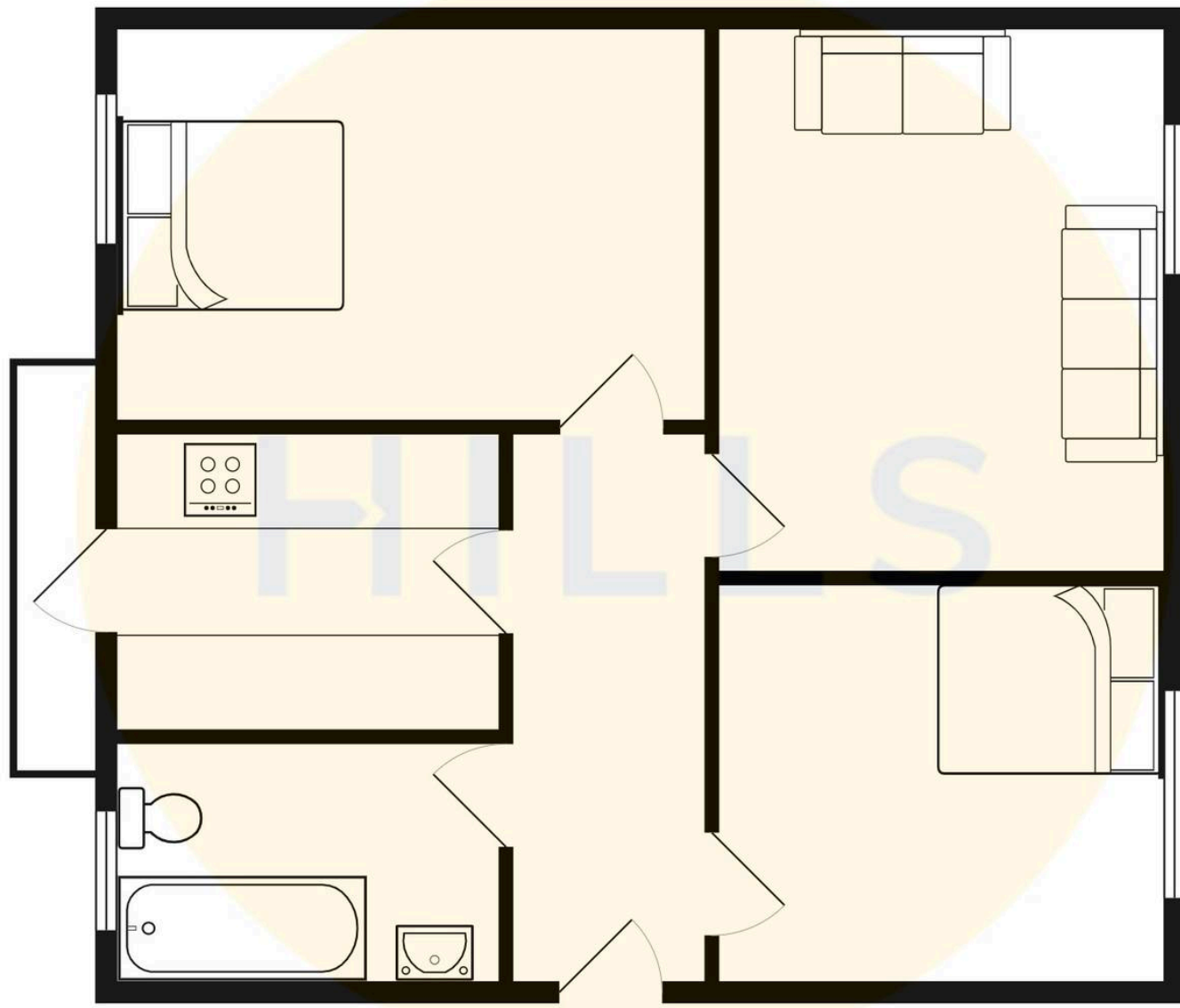
**Bedroom Two**

11' 8" x 10' 11" (3.55m x 3.32m)

**Bathroom**

9' 1" x 6' 11" (2.78m x 2.10m)







## Hills | Salfords Estate Agent

Hills Residential, Sentinel House Albert Street – M30 0SS

0161 707 4900

[sales@hills.agency](mailto:sales@hills.agency)

[www.hills.agency/](http://www.hills.agency/)



By law, we are required to conduct anti-money laundering checks on all potential buyers and sellers. In line with HMRC guidelines, our trusted partner, Coadjute, will securely manage these checks on our behalf. A non-refundable fee of £45 + VAT per person will apply, and Coadjute will handle the payment. Once an offer is accepted, Coadjute will send a secure link for you to complete the biometric checks. These checks must be completed before we can send the memorandum of sale to all parties. PLEASE NOTE: The Agent has not tested any equipment, fixtures, fittings or services so cannot verify that they are in working order or fit for the purpose. References to the properties tenure are based on information supplied by the seller. You are advised to check the availability of this property before travelling any distance to view. Every effort has been made to ensure these particulars are correct and not misleading but their accuracy is not guaranteed nor do they form part of any contract.