

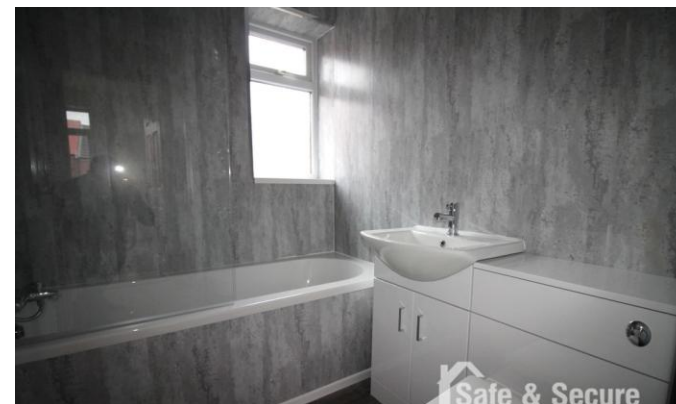


58 Frank Avenue

Seaham
County Durham
SR7 8LU

Asking Price Of **£125,000**
Freehold

Two Bedroom
Mid-Terrace Bungalow
Recently Refurbished
Popular Location
Enclosed Garden
Viewing Highly Recommended





Safe & Secure Properties welcome to the market this recently refurbished two bedroom mid-terrace bungalow. Situation on Frank Avenue, Seaham the property benefits from access to local amenities and transport links. The property also benefits from gas central heating and double glazing throughout.

Early viewing is recommended to appreciate the accommodation on offer.

ENTRANCE PORCH

Double glazed entrance door, double glazed windows to front and side and courtesy light.

LOUNGE

12' 9" x 14' 6" (3.91m x 4.43m) Double glazed window to front, telephone point, television point and radiator.

KITCHEN

6' 3" x 10' 4" (1.92m x 3.17m) Fitted wall and base units, work surfaces, single drainer sink, built-in electric oven, built-in electric hob, extractor hood, space for washing machine, combination boiler, radiator, double glazed window to rear and door to rear.

BEDROOM ONE

10' 10" x 10' 11" (3.32m x 3.33m) Double glazed window to front and radiator.

BEDROOM TWO



7' 8" x 12' 11" (2.35m x 3.96m) Double glazed window to rear and radiator.

BATHROOM

White three piece suite comprising of panelled bath, with shower over, vanity unit, low level wc, radiator and double glazed window to rear.

FRONT GARDEN

Mainly paved, lawned area and fence boundaries.

REAR YARD

Enclosed rear yard with gate access.



Local Authority
Council Tax Band
EPC Rating

Durham County Council
A
TBC



Houghton le Spring
24-25 Westbourne Terrace
Houghton Le Spring
Tyne And Wear
DH4 4QT

Contact
0191 3854477
info@safeandsecureproperties.c
o.uk
safeandsecureproperties.co.uk

Agents Note: Whilst every care has been taken to prepare these particulars, they are for guidance purposes only. All measurements are approximate and are for general guidance purposes only and whilst every care has been taken to ensure their accuracy, they should not be relied upon and potential buyers/tenants are advised to recheck the measurements.