



Hayward Square, Poundbury, DT1 3

Offers Over £650,000



Key Features

- Four Bedroom Town House Overlooking Hayward Square Green
- Top Floor Master Bedroom with Juliet Balcony overlooking Poundbury and Couttryside Views
- Dressing Room and Ensuite
- Two Double Bedrooms and Single on Second Floor with Family Bathroom
- Modern Kitchen/Diner With Built In Appliances
- NHBC Warranty with 4/5 Years Remaining
- Double Doors Out To Patio Area From Lounge
- Downstairs W.C
- South/Westerly Facing Garden with Flower Borders and Patio Area
- Garage with Power and Parking Space



*Extremely WELL PRESENTED FOUR BEDROOM town house
with TOP FLOOR MASTER BEDROOM including JULIET
BALCONY, ENSUITE, dressing room and free-standing bath,
MODERN KITCHEN/DINER, UTILITY ROOM, rear garden with
PATIO AREA and flowe*





Hayward Square, Poundbury, Dorchester, Dorset, DT1 3FG

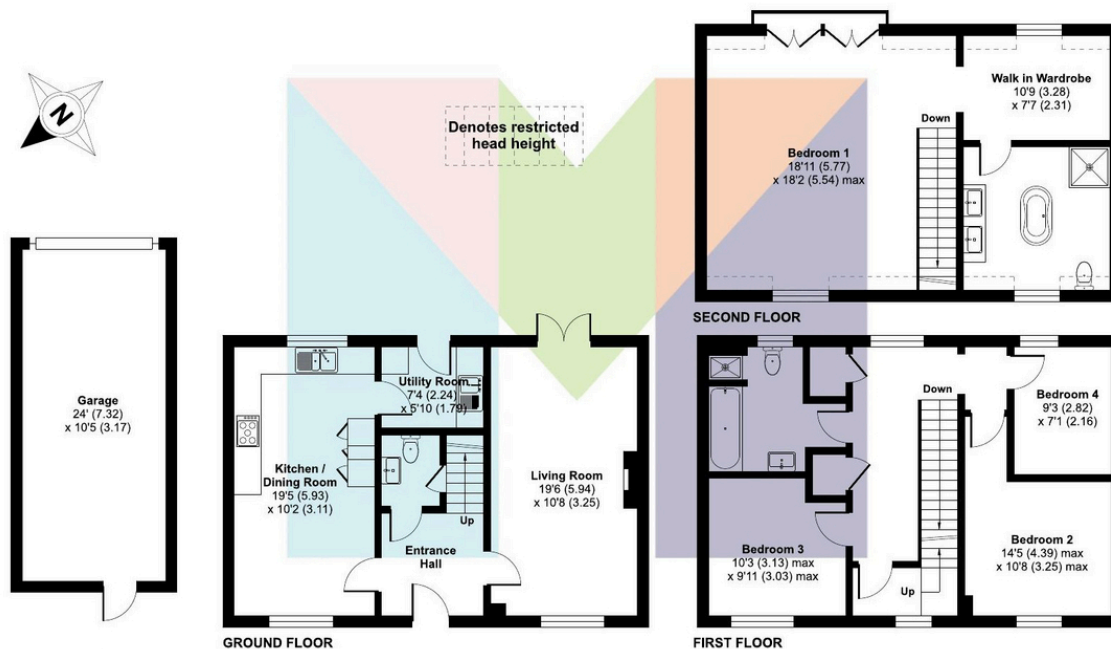
An extremely well-presented four bedroom town house located in the heart of Poundbury, offering stylish and versatile family accommodation over multiple floors. This impressive home features a top floor master bedroom with Juliet balcony, ensuite, dressing room, and free-standing bath, along with a modern kitchen/diner, utility room, rear garden, garage, and parking space, making it an ideal family residence in one of Dorchester's most sought-after developments.

The ground floor comprises a welcoming entrance hall leading to a modern kitchen/dining room, fitted with contemporary units and integrated appliances, providing an ideal space for family meals and entertaining. Adjacent is a utility room for added practicality. The living areas flow seamlessly onto the rear garden, which is laid to lawn with a paved patio area and flower borders, perfect for outdoor dining or relaxation.

The first floor offers well-proportioned bedrooms and family bathroom facilities, while the top floor master suite provides a luxurious retreat with a Juliet balcony, dressing room, ensuite shower, and a stylish free-standing bath, creating a sense of space and tranquility.

Externally, the property benefits from a garage and allocated parking space, providing convenient off-road parking, along with a private rear garden designed for low-maintenance enjoyment.





Hayward Square, Poundbury, Dorchester

Approximate Area = 1641 sq ft / 152.4 sq m

Limited Use Area(s) = 39 sq ft / 3.6 sq m

Garage = 250 sq ft / 23.2 sq m

Total = 1930 sq ft / 179.2 sq m

For identification only - Not to scale

Floor plan produced in accordance with RICS Property Measurement 2nd Edition, Incorporating International Property Measurement Standards (IPMS2 Residential). © n3cheom 2025. Produced for Meyers Estate. REF: 1370949

Energy Efficiency Rating		
	Current	Potential
Very energy efficient - lower running costs		
(92+) A		92
(81-91) B		
(69-80) C		
(55-68) D		
(39-54) E		
(21-38) F		
(1-20) G		
Not energy efficient - higher running costs		
England, Scotland & Wales	84	
EU Directive 2002/91/EC		

Environmental Impact (CO ₂) Rating		
	Current	
Very environmentally friendly - lower CO ₂ emissions		
(92+) A		85
(81-91) B		
(69-80) C		
(55-68) D		
(39-54) E		
(21-38) F		
(1-20) G		
Not environmentally friendly - higher CO ₂ emissions		
England, Scotland & Wales		
EU Directive 2002/91/EC		

Tenure Type: Freehold
Council Tax Band: E
Council Authority: WDDC

Meyers Estates Poundbury
 1 Queen Mother Square,
 Poundbury, DT1 3BL
 01305 259436 | dorchester@meyersstates.com

