



Victoria Bolt
estate agents POWERED BY **exp** UK

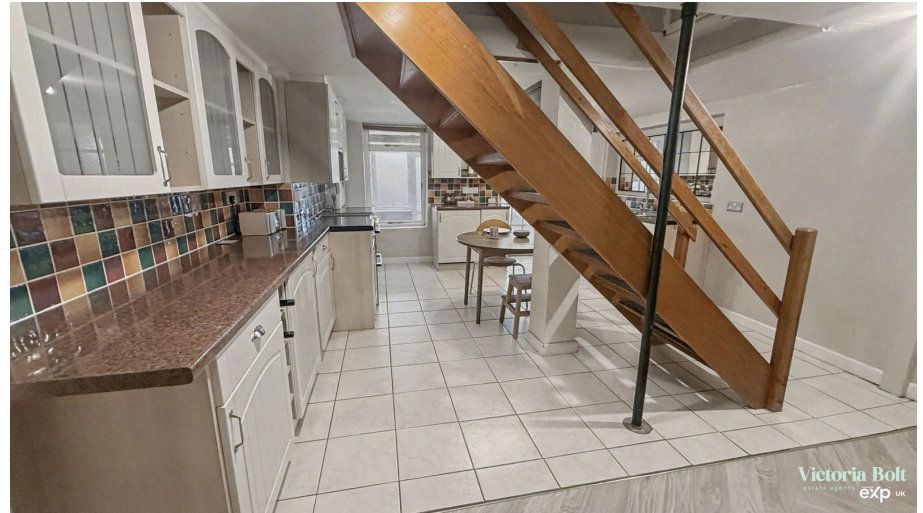
Bittaford Terrace, Bittaford

Guide Price £330,000

🛏️ 4 🚽 2 🛋️ 2



- End-terrace house in the village of Bittaford
- Three/four bedrooms
- Modern kitchen/diner/family room
- Conservatory & downstairs WC
- Ideal first-time purchase or family home opportunity
- Spacious accommodation arranged over three floors
- Countryside views
- Low-maintenance outdoor area
- Convenient access to Ivybridge, A38 & commuter links
- On street parking



Located in the sought-after village of Bittaford, this well-presented three-bedroom end-terrace home offers bright, spacious living arranged over three floors. Featuring a modern kitchen/diner, a comfortable living area, countryside views, and a low-maintenance outdoor space, the property provides flexible accommodation ideal for families or home working.



This floorplan is only for illustrative purposes and is not to scale. Measurements of rooms, doors, windows, and any items are approximate and no responsibility is taken for any error, omission or mis-statement. Icons of items such as bathroom suites are representations only and may not look like the real items. Made with Made Snappy 360.

