



23 The Meadows, Flackwell Heath

£750,000



Robertsons

23 The Meadows

Flackwell Heath, Buckinghamshire

A well appointed detached bungalow in this highly sought after cul-de-sac which is being offered for sale with no upward chain. Entrance hall, Dining room, Sitting room, Kitchen, Utility room, Three bedrooms (two double bedrooms and one single), Bathroom, Separate W.C., Gardens, Garage and parking.

Council Tax band: E

Tenure: Freehold

Entrance hall

Window to front, radiator, opening to Dining room

Dining room

Radiator, built in storage cupboard, wall thermostat

Sitting room

Stone built fireplace with fitted gas flame effect fire, two wall light points, sliding patio doors to garden, two radiators, window to front

Kitchen

Fitted with a range of eye and base level units incorporating stainless steel sink unit with mixer tap and drainer, space for oven with extractor over, space for fridge, part tiled walls, radiator, window to rear

Utility room

Fitted worktops with stainless steel sink unit with mixer tap, fitted base level unit, space for freezer, space and plumbing for washing machine, wall mounted Glow Worm gas fired central heating boiler, door to garden, window to rear





Inner hall

Access to loft space, airing cupboard housing foam clad hot water cylinder and shelved storage

Bedroom 1

Radiator, window to rear

Bedroom 2

Radiator, window to front

Bedroom 3

Radiator, window to front

Bathroom

Suite comprising panelled bath, wash hand basin, shaver point, radiator, part tiled walls, shower cubicle housing fitted shower unit, window to side

Separate W.C.

Low level W.C., window to side

Front garden/Parking

A block paved driveway provides parking for two cars. The remainder is laid to lawn

Garage

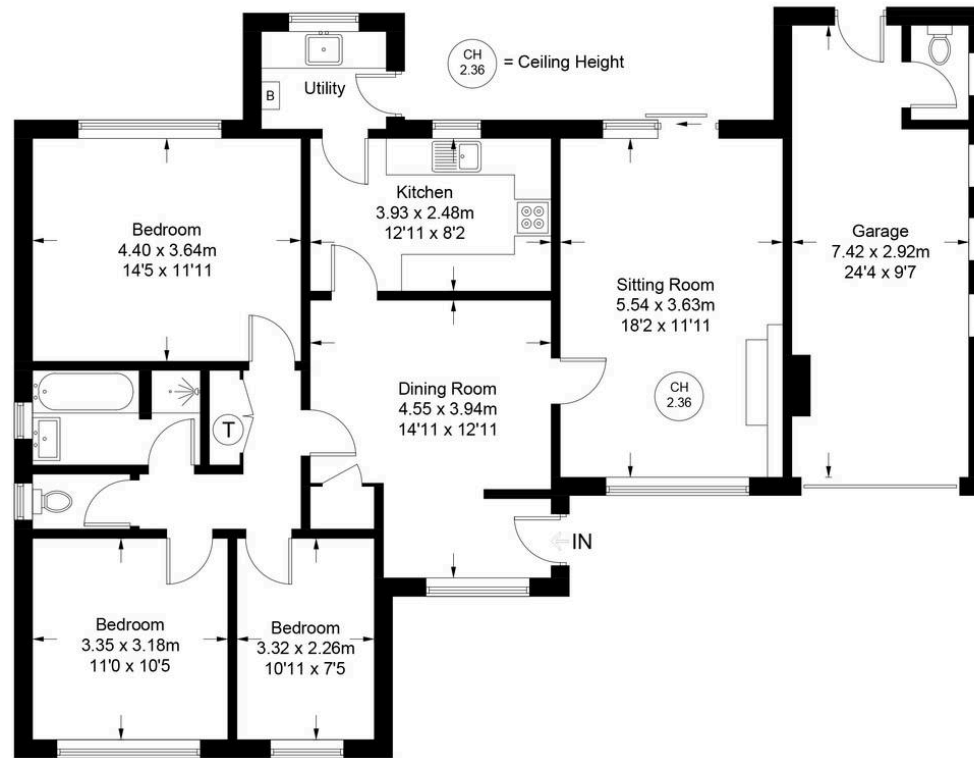
With metal up and over door, meters, three windows to side and door to garden, separate gardeners W.C. with window to side

Rear garden

A paved patio leads to the remainder of garden which is laid to lawn with flower and shrub borders. The garden is walled with gated side access on both sides and extends to 28' x 64'.



Approximate Gross Internal Area = 101.1 sq m / 1088 sq ft
Garage = 21.6 sq m / 232 sq ft
Total = 122.7 sq m / 1320 sq ft



Ground Floor

Floor Plan produced for Robertsons by Media Arcade Ltd ©.
Illustration for identification purposes only. Window and door openings are approximate. Whilst every attempt is made to assure accuracy in the preparation of this plan, please check all dimensions, shapes and compass bearings before making any decisions reliant upon them.



Robertsons