

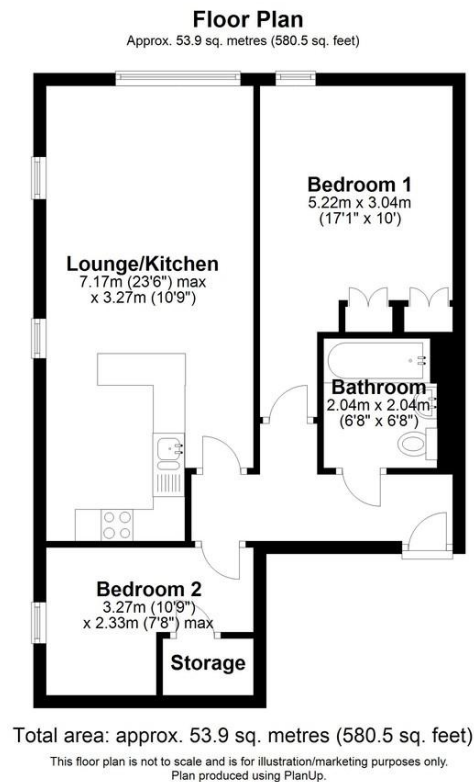
# OCTAHEDRON, 50 GEORGE STREET

BIRMINGHAM, B3 1PP

£170,000  
LEASEHOLD

OCTAHEDRON | Two Bedrooms | One Bathroom | Secure & Allocated Parking | No Chain | Located in the heart of the Jewellery Quarter

# Davidson



Score	Energy rating	Current	Potential
92+	A		
81-91	B		81 B
69-80	C	71 C	
55-68	D		
39-54	E		
21-38	F		

# Davidson

OFFICE  
22 Harborne Road  
Birmingham  
West Midlands  
B15 3AA

0121 455 7727  
info@davidsonestates.co.uk  
www.davidsonestates.co.uk

Agents Note: Whilst every care has been taken to prepare these particulars, they are for guidance purposes only. All measurements are approximate and are for general guidance purposes only and whilst every care has been taken to ensure their accuracy, they should not be relied upon and potential buyers/tenants are advised to recheck the measurements