



14 Tilstock Crescent, Sutton Farm, Shrewsbury, Shropshire, SY2 6HL

Offers in the Region Of £375,000

This surprisingly spacious 3 bedroom detached dormer style home is offered with no upward chain. Situated in the ever popular Sutton Farm area, the versatile accommodation provides: Ground floor: Enclosed Porch, hall, Living Room, Dining Room, Conservatory, Kitchen, Double Bedroom, Bathroom, WC, Utility and Garage. First floor: Landing, Bedroom with en-suite Shower Room, further double Bedroom. GCH, DG. Attractive, spacious rear garden.



14 Tilstock Crescent, Sutton Farm, Shrewsbury, Shropshire, SY2 6HL

The mention of any appliances and/or services within these sales particulars does not imply that they are in full and efficient working order.

Accommodation comprises

Double glazed entrance door.

Enclosed Porch

Double glazed window to the front, double glazed entrance door and side screen.

Entrance Hall

Radiator, useful built in under stairs storage cupboard, staircaes leads to First Floor Landing.

Living Room

Ornamental stone fireplace with display niches and slate heath, radiator, large double glazed front window.

Dining Room

2 radiators, built in storages cupboard, double glazed sliding patio doors.

Conservatory

Of brick construction with sliding patio doors leading to garden.

Kitchen

Fitted with units to 3 wall areas, laminated work tops with inset sink unit, space for appliances, double glazed window to the rear.

Bathroom

2 piece suite including bath with fully tiled walls around and electric shower unit over, half tiled to further wall areas, wash basin, radiator, double glazed window to the rear.

Separate WC

Fitted with WC, half tiled walls, radiator, double glazed rear window.

Ground Floor Bedroom 3

Radiator, double glazed front window.

First Floor Landing

Useful under eaves storage cupboard.

Bedroom 1

Range of fitted bedroom furniture, radiator, door to gallery, double glazed dormer window to the front.

En-suite Shower Room

Fitted with 3 piece suite including shower cubicle, wash basin with cupboards beneath, WC, double glazed skylight, radiator, wall mounted wall heater.

Bedroom 2

Radiator, built-in double wardrobe, double glazed window to the front.

Outside - Front

The garden is laid to lawn, a wide driveway provides parking.

Brick Built Garage

Power and lighting, door to Utility.

Utility Room

Wall mounted Baxi gas central heating boiler, window and door to rear Garden.

Rear Garden

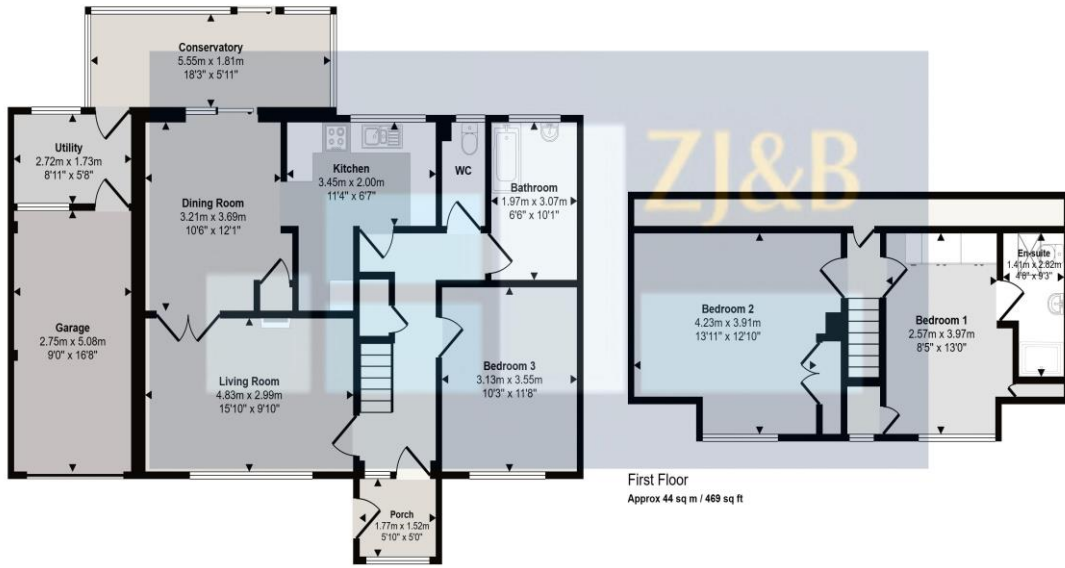
Approached onto a patio, a good size garden laid to lawn with further split level patios and raised shrub beds and borders. Useful timber work shop and shed. The garden is enclosed by fencing and hedging.

Council Tax Band D

Tenure: Our client advises us that the property is Freehold. Should you proceed with the purchase of the property, these details must be verified by your solicitor.

Viewing: To arrange a viewing call in at our office or telephone **01743 248351**

Approx Gross Internal Area
147 sq m / 1583 sq ft



Ground Floor
Approx 104 sq m / 1115 sq ft

First Floor
Approx 44 sq m / 469 sq ft

This floorplan is only for illustrative purposes and is not to scale. Measurements of rooms, doors, windows, and any items are approximate and no responsibility is taken for any error, omission or mis-statement. Icons of items such as bathroom suites are representations only and may not look like the real items. Made with Made Snappy 360.

FLOOR PLANS FOR GUIDANCE ONLY



This is a copy of the title plan on 15 MAR 2020 at 11:27:37. This copy does not take account of any application made after that time even if still pending in HM Land Registry when this copy was issued.

This copy is not an 'Official Copy' of the title plan. An official copy of the title plan is admissible in evidence in a court to the same extent as the original. A person is entitled to be indemnified by the registrar if he or she suffers loss by reason of a mistake in an official copy. If you want to obtain an official copy, the HM Land Registry web site explains how to do this.

HM Land Registry endeavours to maintain high quality and scale accuracy of title plan images. The quality and accuracy of any print will depend on your printer, your computer and its print settings. This title plan shows the general positions, not the exact line, of the boundaries. It may be subject to distortions in scale. Measurements scaled from this plan may not match measurements between the same points on the ground.

This title is dealt with by HM Land Registry, Telford Office.

© Crown Copyright. Produced by HM Land Registry. Further reproduction in whole or in part is prohibited without the prior written permission of Ordnance Survey. Licence Number AC09881962.



FREE MORTGAGE ADVICE

Whether you are a first time buyer, moving home, buying as an investor or looking to save on your mortgage payments, you will benefit from some **free** no obligation mortgage advice. To arrange an appointment with Stephen Bath of Bee Mortgages, who is based at our office, call us on **01743 248351**

Whole of Market, clear and relevant tailored to your individual needs and circumstances.

Your home may be repossessed if you do not keep up repayments on your mortgage