



Channel View, £355,000

- EXTENDED SEMI-DETACHED HOME
- FOUR SPACIOUS BEDROOMS
- PARKING AND DETACHED GARAGE
- GROUND FLOOR W.C
- GREAT ACCESS TO MAJOR LINK ROADS
- PRIVATE ENCLOSE GARDENS
- UTILITY ROOM
- EPC Rating: C
- Council Tax: D



 4  2  2



About the property

Fantastic Extended Four-Bedroom Family Home - Must be seen! This Beautifully presented and thoughtfully extended four-bedroom semi-detached homes offers the perfect blend of space and practicality - ideal for modern family living. From the moment you arrive, the property impresses with its spacious and welcoming interior. The ground floor boasts a bright and airy dual aspect lounge, a separate dining room perfect for entertaining, a convenient utility room and a ground floor W.C. At the heart of the home is a contemporary kitchen, finished to a high standard with plenty of hidden gems including an impressive larder, further storage and built in modern appliances. Upstairs the property continues to impress with four generous bedrooms, including a spacious master bedroom, along with a well-appointed, newly fitted family bathroom - perfect for growing families.

Externally, the property enjoys private gardens and benefits from a detached garage and driveway suitable for several vehicles. To the rear, the garden offers a wonderful outdoor retreat, featuring a well-maintained patio area.

Perfectly positioned, the property is within close proximity to local amenities, reputable schools and Chepstow Town centre. Excellent transport links, including nearby bus and rail connections and easy access to the A48, M48 and M4 make commuting to Cardiff and Bristol effortless.

Accommodation

Kitchen - 18' 10" x 9' 10" (5.74m x 3.00m)

Dining Room - 11' 1" x 9' 9" (3.38m x 2.97m)

Living Room - 19' 8" x 11' 4" (5.99m x 3.45m)

Utility - 7' 7" x 5' 9" (2.31m x 1.75m)

Bedroom 1 - 15' 11" x 11' 3" (4.85m x 3.43m)

Bedroom 2 - 13' 7" x 9' 1" (4.14m x 2.77m)

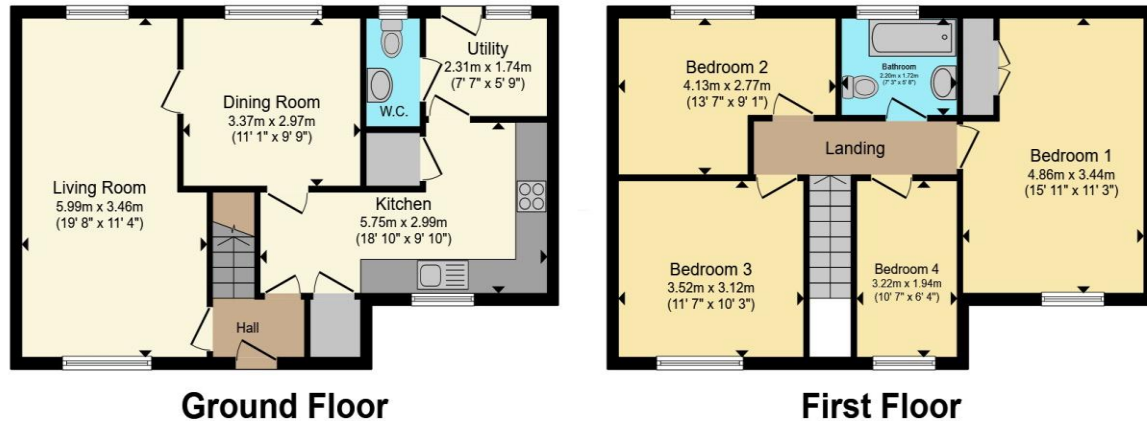
Bedroom 3 - 11' 7" x 10' 3" (3.53m x 3.12m)

Bedroom 4 - 10' 7" x 6' 4" (3.23m x 1.93m)

Bathroom - 7' 3" x 5' 8" (2.21m x 1.73m)



Floorplan



Total floor area 111.4 m² (1,199 sq.ft.) approx

This floor plan is for illustrative purposes only. It is not drawn to scale. Any measurements, floor areas (including any total floor area), openings and orientation are approximate. No details are guaranteed, they cannot be relied upon for any purpose and they do not form part of any agreement. No liability is taken for any error, omission or misstatement. A party must rely upon its own inspection(s). Powered by www.propertybox.io



Important Information

Note while we endeavour to make our sales details accurate and reliable, if there is any point which is of particular interest to you, please contact the office and we will be pleased to confirm the position for you. We have not personally tested any apparatus, equipment, fixtures, fittings or services and cannot verify they are in working order or fit for their purposes. Nothing in these particulars is intended to indicate that carpets or curtains, furnishings or fittings, electrical goods (whether wired or not). Gas fires or light fittings or any other fixtures not expressly included form part of the property offered for sale. This computer generated Floorplan, if applicable, is intended as a general guide to the layout and design of the property. It is not to scale and should not be relied upon for dimensions. Tenure: We cannot confirm the tenure of the property as we have not had access to the legal documents. The buyer is advised to obtain verification from their solicitor or surveyor.

Peter Alan Limited is registered in England and Wales under company number 2073153, Registered Office is Cumbria House, 16-20 Hockliffe Street, Leighton Buzzard, Bedfordshire, LU7 1GN. VAT Registration Number is 500 2481 05. For activities relating to regulated mortgages and non-investment insurance contracts, Peter Alan Limited is an appointed representative of Connells Limited which is authorised and regulated by the Financial Conduct Authority. Connells Limited's Financial Services Register number is 302221. Most buy-to-let

