



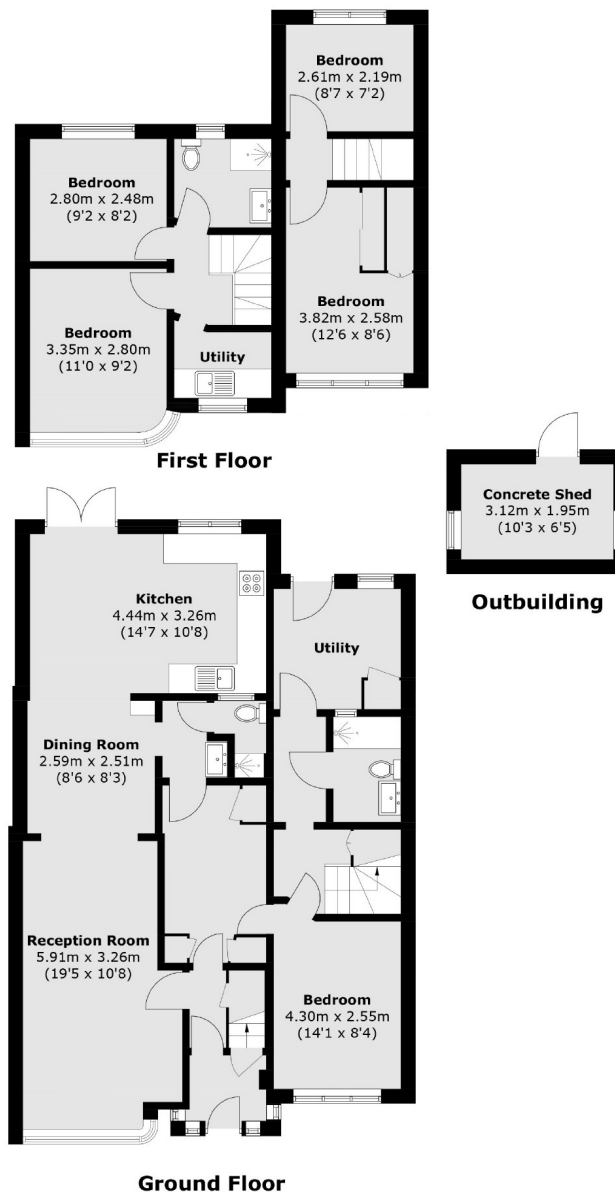
Woodhouse Avenue, UB6

£725,000

This end of terrace, five bedroom home has a vast amount of potential to either be remodelled or further extended if required. There is also potential for an outbuilding to be built in the rear garden. The property also has three bathrooms and an additional utility room.

Located within the Medway Village, this property is less than a quarter of a mile from the sought after 'Ofsted outstanding' Selborne Primary School and only 200 yards from Perivale station (Central line).

- No Onward Chain • End Of Terrace • Off-Street Parking •
- Corner Plot • Close To Station • Potential To Extend •



Total area (approx.): 136.2 sq. m (1,466.1 sq. ft)
(Excluding Outbuilding)
Outbuilding: 6.2 sq. m (66.7 sq. ft)

Robertson Smith & Kempson Hanwell Sales
69 Greenford Avenue,
London, W7 1LL
020 8566 2339
hanwellsales@robertsonsmithandkempson.co.uk

Energy Rating: D. We aim to make our particulars both accurate and reliable. However they are not guaranteed; nor do they form part of an offer or contract. If you require clarification on any points then please contact us, especially if you're traveling some distance to view. Please note that appliances and heating systems have not been tested and therefore no warranties can be given as to their good working order.