
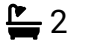





HOMES BY VICTORIA
ESTATE AGENCY

Harpwell Avenue, Redditch, B98 7GD

Offers Over £260,000

 3  2  1



Welcome to Harpwell Avenue – a beautifully presented three-bedroom terraced home, offering stylish, move-in-ready accommodation, perfect for first-time buyers, young families or those looking to downsize.

[homesbyvictoria.co.uk](https://www.homesbyvictoria.co.uk)

victoria@homesbyvictoria | 07833 136521

FOR M HOMES MIDLANDS LIMITED trading as Homes By Victoria Company Number: 13688840 VAT no: 470190115



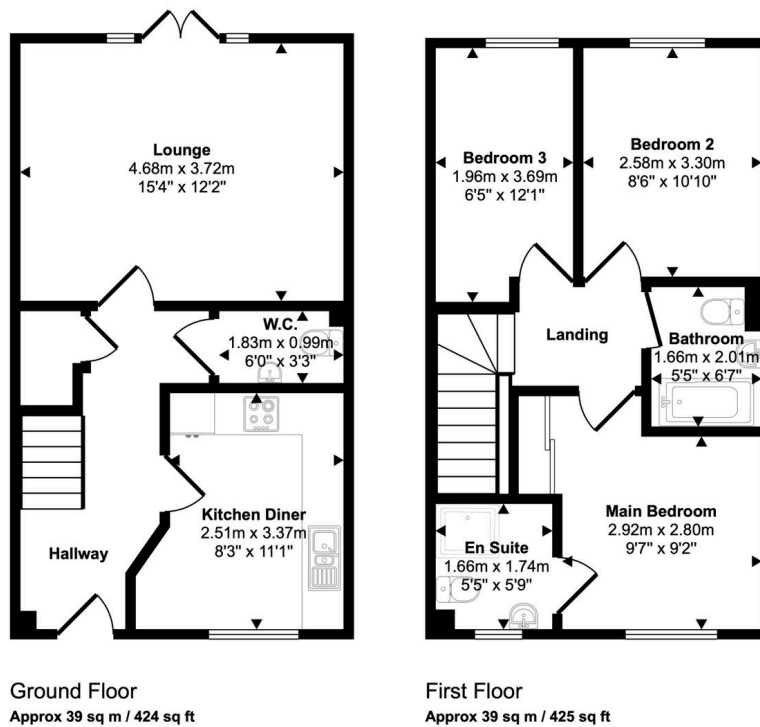
HOMES BY VICTORIA
ESTATE AGENCY



Key Features

- IDEAL FIRST TIME BUYERS HOME
- POPULAR RESIDENTIAL LOCATION
- IMMACULATE AND MOVE IN READY
- THREE BEDROOM TERRACE PROPERTY
- BREAKFAST KITCHEN
- SPACIOUS LOUNGE
- DOWNSTAIRS WC
- MASTER BEDROOM WITH ENSUITE
- FAMILY BATHROOM
- BEAUTIFUL REAR GARDEN

Approx Gross Internal Area
79 sq m / 848 sq ft



This floorplan is only for illustrative purposes and is not to scale. Measurements of rooms, doors, windows, and any items are approximate and no responsibility is taken for any error, omission or mis-statement. Icons of items such as bathroom suites are representations only and may not look like the real items. Made with Made Snappy 360.