

Markham Avenue, Armthorpe, Doncaster, DN3

Offers In Region Of £130,000

🛏 3 🚿 1 🚗 2

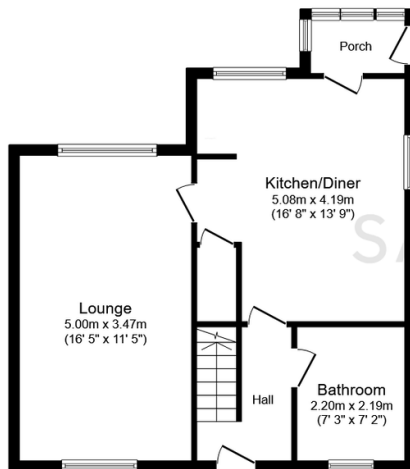


A three-bedroom terraced house in Armthorpe, offered for sale with no onward chain, featuring a spacious extended kitchen-diner, enclosed rear garden, larger-than-average detached garage with driveway, and excellent potential for renovation to add value, appealing to first-time buyers, families, and investors.

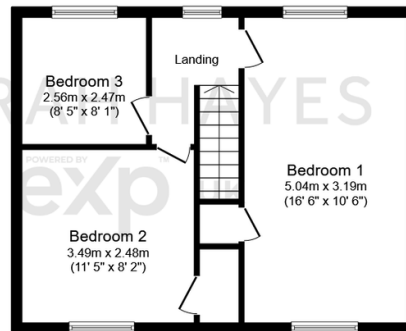
The property benefits from a range of local amenities, including shops, supermarkets, cafés, and takeaways easily accessible within the village centre. The area is well-served by local schools, making it a convenient location. Excellent public transport links with good motorway links to M18 / M1 / A1

Key Features

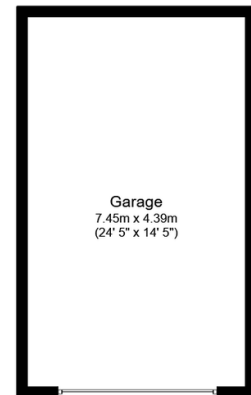
- QUOTE SH0316 WHEN CALLING TO ENQUIRE OFFERED WITH NO ONWARD CHAIN OR BOOK A VIEWING
- OPPORTUNITY TO RENOVATE AND ADD VALUE
- EXTENDED SPACIOUS KITCHEN / DINER
- DOWNSTAIRS BATHROOM
- DRIVEWAY WITH DETACHED GARAGE TO THE REAR
- GOOD SIZE 3 BEDROOM END TERRACE
- SPACIOUS LOUNGE
- GOOD SIZE ENCLOSED REAR GARDEN
- TENURE FREEHOLD. EPC RATING D. COUNCIL TAX BAND A



Ground Floor
Floor area 56.5 sq.m. (608 sq.ft.)



First Floor
Floor area 47.7 sq.m. (514 sq.ft.)



Garage
Floor area 32.7 sq.m. (352 sq.ft.)

Total floor area: 136.9 sq.m. (1,473 sq.ft.)

This floor plan is for illustrative purposes only. It is not drawn to scale. Any measurements, floor areas (including any total floor area), openings and orientations are approximate. No details are guaranteed, they cannot be relied upon for any purpose and do not form any part of any agreement. No liability is taken for any error, omission or misstatement. A party must rely upon its own inspection(s). Powered by www.Propertybox.io