



Sidney Road, South Knighton

Offers Over £300,000

A CHARMING period bay-fronted terrace property that beautifully combines original CHARACTER FEATURES with modern touches. There is an attractive landscaped rear garden, a delightful outdoor area.

Council Tax band: B

Tenure: Freehold

EPC Energy Efficiency Rating: D





Entrance Hall

With stairs to first floor, radiator.

Open Plan Through Lounge Diner 27' 0" x 11' 7" (8.24m x 3.53m)

With double glazed bay window to the front elevation, living flame effect gas fire with fire surround, picture rail, two radiators.

Extended Fitted Kitchen 13' 0" x 8' 6" (3.97m x 2.59m)

With double glazed French doors to the rear elevation, stainless steel sink and drainer unit with a range of wall and base units with work surface over, built-in double oven and electric hob with stainless steel chimney hood over, plumbing for washing machine, pantry, space for fridge freezer, breakfast bar, laminate floor.

Ground Floor WC 4' 6" x 2' 8" (1.37m x 0.82m)

With double glazed window to the rear elevation, low-level WC, wash hand basin, wall mounted boiler.



First Floor Galleried Landing

With staircase leading to loft room, under stairs storage cupboard, radiator, additional storage cupboard with double glazed window to the side elevation.

Bedroom One 13' 1" x 10' 8" (3.98m x 3.26m)

With double glazed window to the rear elevation, a range of fitted wardrobes with box cupboards over, dressing tables and drawers, radiator.

Bedroom Two 11' 11" x 11' 0" (3.62m x 3.35m)

With double glazed window to the front elevation, original style fireplace, picture rail, radiator.

Bedroom Three 7' 6" x 5' 9" (2.29m x 1.75m)

With double glazed window to the front elevation, radiator.

Bathroom 8' 6" x 7' 10" (2.59m x 2.40m)

With two double glazed windows to the rear elevation, bath, double walk-in shower cubicle, pedestal wash hand basin, low-level WC, tiled walls, extractor fan, heated towel rail.

Loft Room 16' 7" x 13' 7" (5.05m x 4.14m)

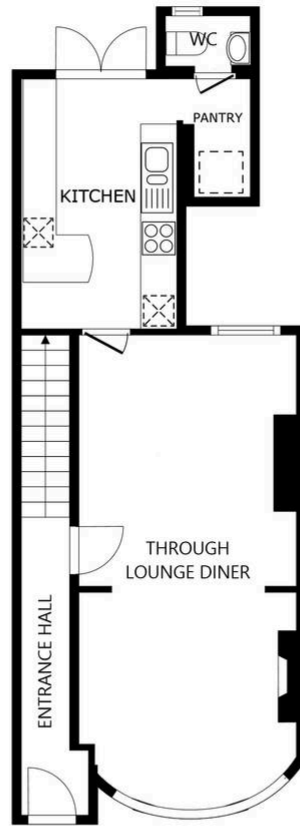
With skylight window to the front elevation, power and lighting.

Front Garden

A fenced front forecourt with gated access.

Rear Garden

With covered paved seating area, steps leading down to a further paved and gravelled area, well stocked flowerbeds, mature shrubs and trees, outside lighting, outside tap, gate to side access.



FLOOR 1

SIZES AND DIMENSIONS ARE APPROXIMATE, ACTUAL MAY VARY.

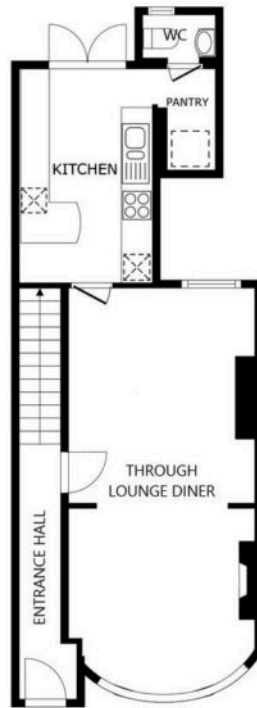


You can include any text here. The text can be modified upon generating your brochure.

We'll keep you moving...

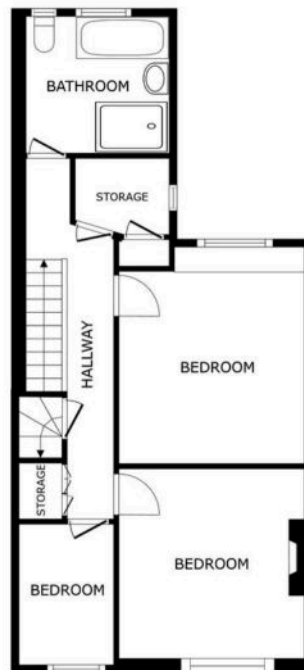
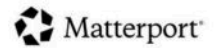


We must inform all prospective purchasers that the measurements are taken by an electronic tape and are provided as a guide only and they should not be used as accurate measurements. We have not tested any mains services, gas or electric appliances, or fixtures and fittings mentioned in these details, therefore, prospective purchasers should satisfy themselves before committing to purchase. Intending purchasers must satisfy themselves by inspection or otherwise to the correctness of the statements contained in these particulars. Knightsbridge Estate Agents & valuers (nor any person in their employment) has any authority to make any representation or warranty in relation to the property.' The floor plans are not to scale, and are intended for use as a guide to the layout of the property only. They should not be used for any other purpose. Similarly, the plans are not designed to represent the actual décor found at the property in respect of flooring, wall coverings or fixtures and fittings.



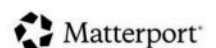
FLOOR 1

SIZES AND DIMENSIONS ARE APPROXIMATE, ACTUAL MAY VARY.



FLOOR 2

SIZES AND DIMENSIONS ARE APPROXIMATE, ACTUAL MAY VARY.



We'll keep you moving...



We must inform all prospective purchasers that the measurements are taken by an electronic take and are provided as a guide only and they should not be used as accurate measurements. We have not tested any mains services, gas or electric appliances, or fixtures and fittings mentioned in these details, therefore, prospective purchasers should satisfy themselves before committing to purchase. Intending purchasers must satisfy themselves by inspection or otherwise to the correctness of the statements contained in these particulars. Knightsbridge Estate Agents (nor any person in their employment) has any authority to make any representation or warranty in relation to the property. The floor plans are not to scale, and are intended for use as a guide to the layout of the property only. They should not be used for any other purpose. We are required by law to conduct anti-money laundering checks on all those selling or buying a property. Whilst we retain responsibility for ensuring checks and any ongoing monitoring are carried out correctly, the initial checks are carried out on our behalf by Lifetime Legal who will contact you once you have agreed to instruct us in your sale or had an offer accepted on a property you wish to buy. The cost of these checks is £60 (incl. VAT), which covers the cost of obtaining relevant data and any manual checks and monitoring which might be required. This fee will need to be paid by you in advance of us publishing your property (in the case of a vendor) or issuing a memorandum of sale (in the case of a buyer), directly to Lifetime Legal, and is non-refundable. We will receive some of the fee taken by Lifetime Legal to compensate for its role in the provision of these checks.