



The Water Gardens Birchley Road, Battledown, Cheltenham, GL52 6NY

£4,000 Per month

TO LET



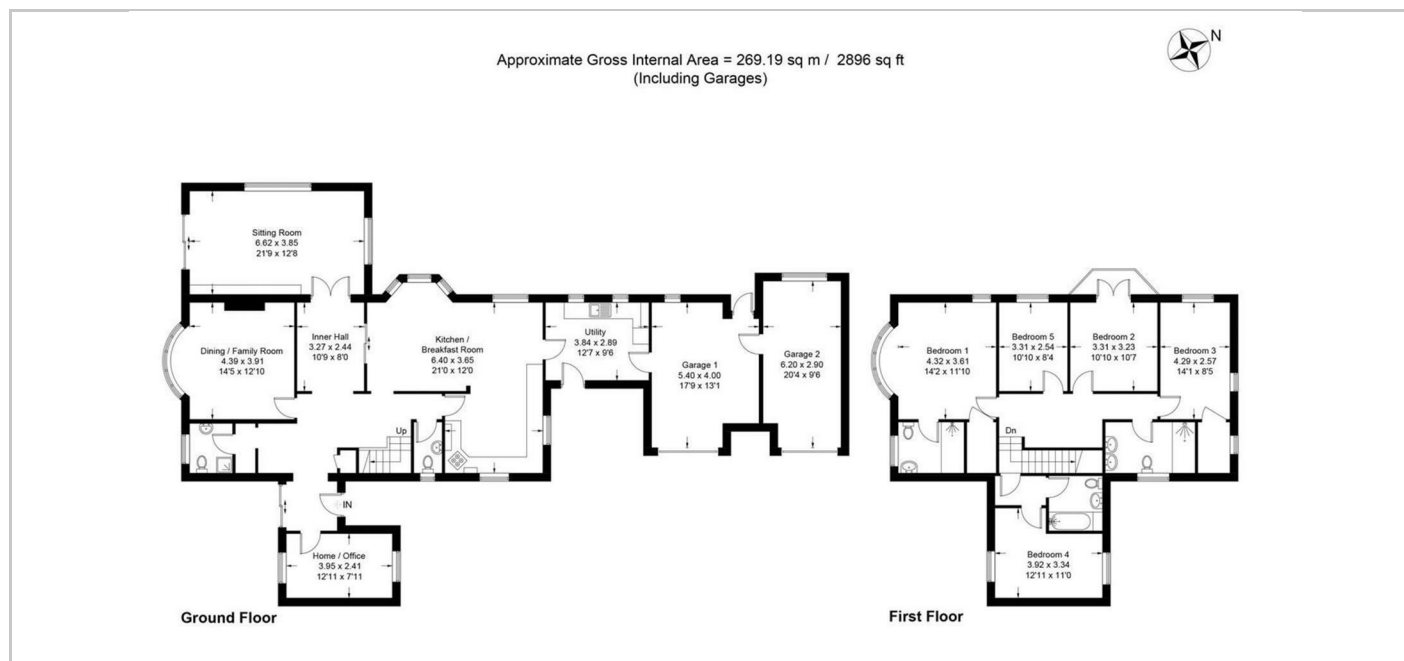
- Five Bedrooms
- Four Bathrooms
- Four Reception Rooms
- Unfurnished
- Spectacular Views
- Maintained Gardens
- Double Garage & Gated Driveway
- Private Estate
- Council Tax Band - H
- EPC Rating - D

THE PROPERTY

A substantial, five bedroom, detached house perched on the edge of Battledown and enjoying the most superb views over the town.

The property has been renovated in recent years and offers flexible, generously proportioned living spaces with great views from all angles. Internally the property briefly comprises of a study, sitting room, drawing room with wood burning stove, dining room leading into a breakfast area and onto a contemporary fitted kitchen with appliances, large utility, WC / shower room, five generous double bedrooms – two with en suites, balcony overlooking the town from another and dressing area to a further bedroom, plus a good sized family shower room. The property is warmed throughout by gas fired central heating.

Externally the property benefits from extensive gardens of circa one acre which are maintained inclusively, gated driveway parking and two large garages.



SITUATION

Directions