





36 Parry Avenue

Northwich

FREEHOLD UPON COMPLETION. Beautifully presented three-bedroom detached home in a desirable location.

Council Tax band: D

Tenure: Leasehold

EPC Energy Efficiency Rating: C

EPC Environmental Impact Rating: B

- Detached Family Home
- Three Bedrooms
- FREEHOLD UPON COMPLETION
- Driveway & Garage
- Rear Garden
- Beautiful Design Throughout
- Downstairs WC
- En-Suite
- Integral Appliances

Hallway

Lounge

Kitchen Diner

Downstairs WC

Landing

Master Bedroom

En-Suite

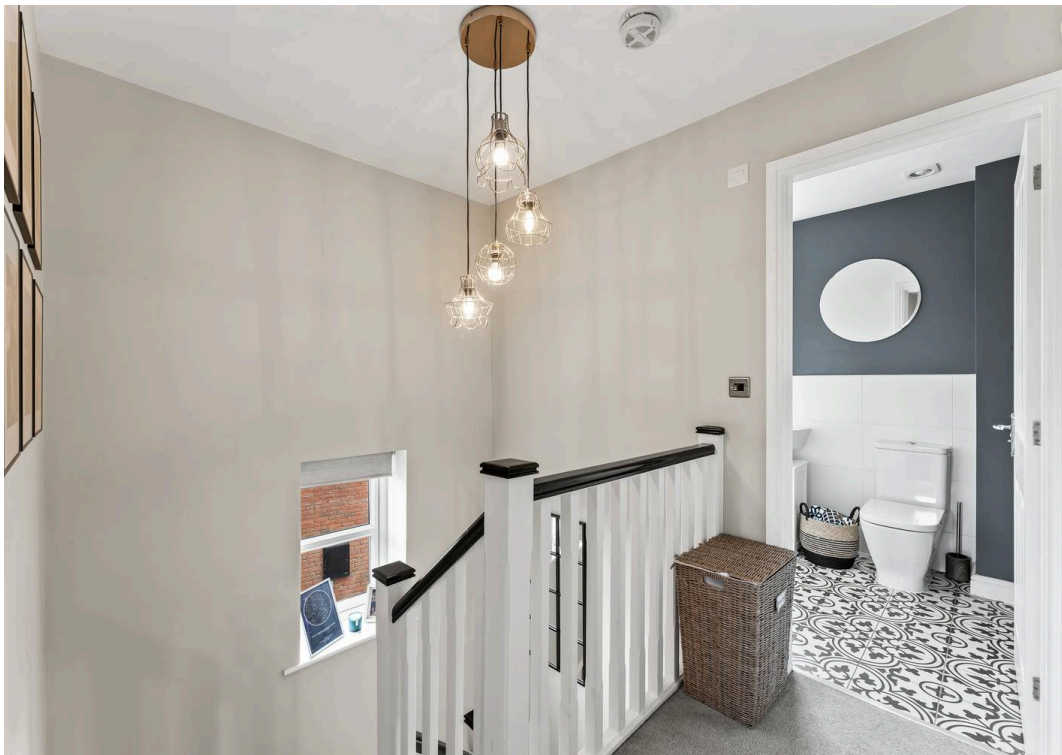
Bedroom Two

Bedroom Three

Bathroom

















36 Parry Avenue Winnington

Approximate Gross Internal Floor Area = 86.3 sq m / 930 sq ft

Garage Area = 14.7 sq m / 159 sq ft

Total Area = 101.0 sq m / 1089 sq ft

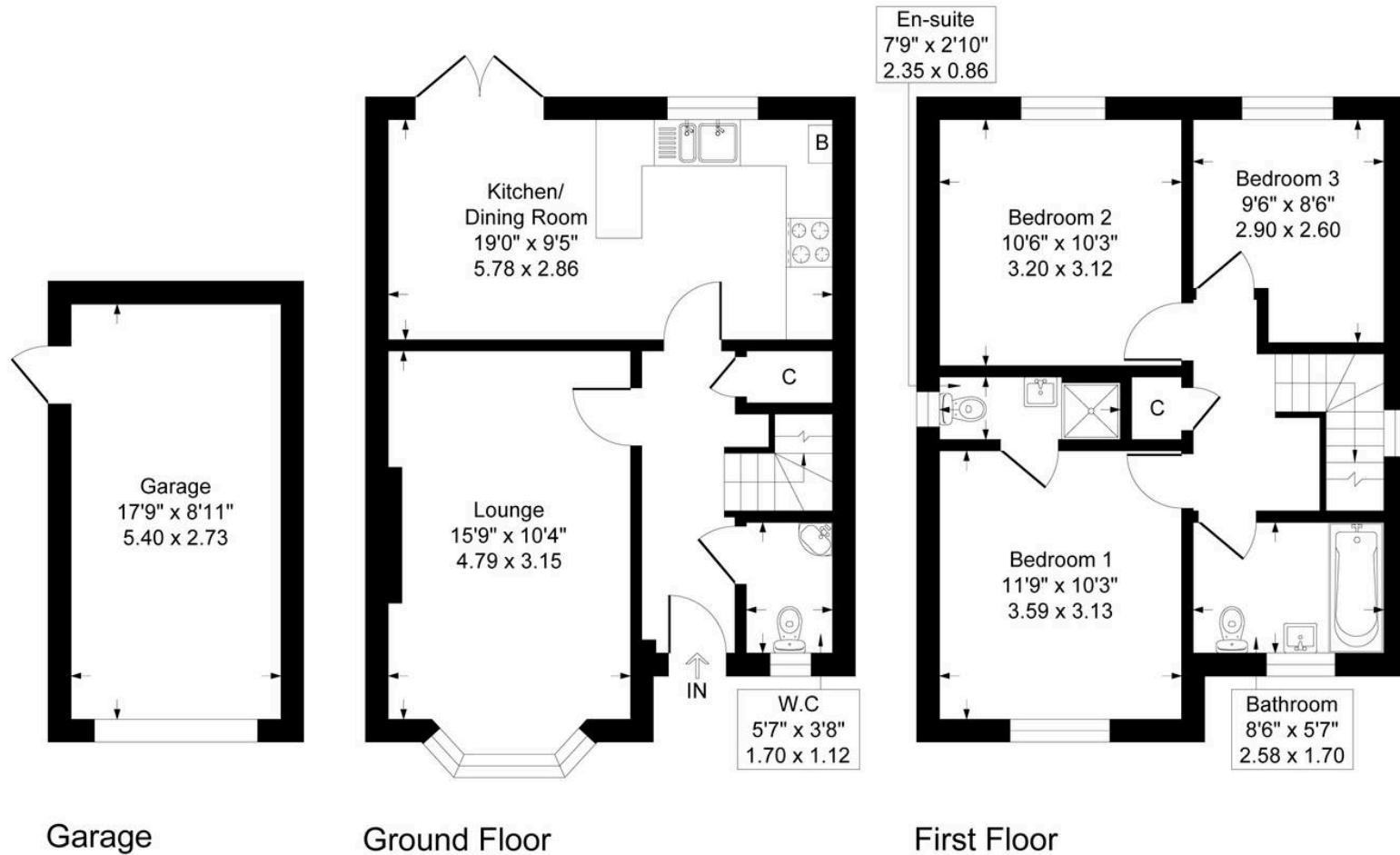


Illustration for identification purposes only, measurements are approximate, not to scale.

Vincent James Estate Agents

87 Witton Street, Northwich - CW9 5DR

01606663939 • hello@vincentjamesestateagents.co.uk • www.vincentjamesestateagents.co.uk/