



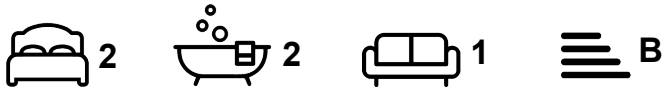
Apartment

**FLAT 3A, 21-25
HEADINGLEY AVE,
HEADINGLEY,
LEEDS, LS6 3EP**

Per Week

£250 Per

FEATURES



SJM ©
PROPERTIES

2 Bedroom Apartment located in Leeds

Call us on

01132782201

phil@sjm-properties.com

sjm-properties.com

Council Tax Band

A

Purpose built luxury 3 bedroom furnished apartment.

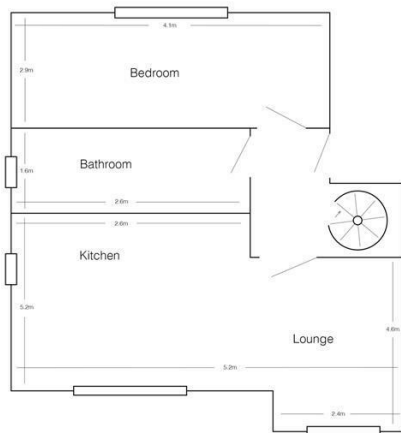
Open plan lounge kitchen with wood floors, Bathroom with shower bath, 3 large double bedrooms set over 2 floors with En-suite bathrooms.

3rd bedroom accessed via a feature spiral staircase.

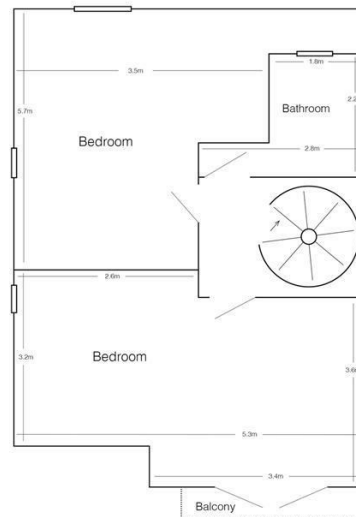
All bedrooms furnished with double beds, wardrobe, chest of drawers, desk and chair.

Double glazed with gas central heating.

Great location only a short walk to Leeds Uni and close to Headingley stadium.



Ground Floor



First Floor

Energy Efficiency Rating		Current	Potential
<i>Very energy efficient - lower running costs</i>			
(92 plus)	A		
(81-91)	B	81	83
(69-80)	C		
(55-68)	D		
(39-54)	E		
(21-38)	F		
(1-20)	G		
<i>Not energy efficient - higher running costs</i>			
England & Wales		EU Directive 2002/91/EC	

Agents Note: Whilst every care has been taken to prepare these particulars, they are for guidance purposes only. All measurements are approximate and are for general guidance purposes only and whilst every care has been taken to ensure their accuracy, they should not be relied upon and potential buyers are advised to recheck the measurements.

SJM [©]
PROPERTIES