



## Albacore Crescent, SE13

£2,250 Per calendar month

A newly refurbished, three double bedroom, split level flat comprises a good-sized reception room with space for a dining room table and chairs, three double bedrooms, a brand new fitted kitchen and a new modern bathroom. Perfect for professional sharers.

Ladywell station is five minutes' walk away from where there are fast and regular services into central London. Alternatively, Catford and Catford Bridge stations are also within easy reach. In addition, you can pick up the DLR from Lewisham station for easy access into Canary Wharf.

### Features

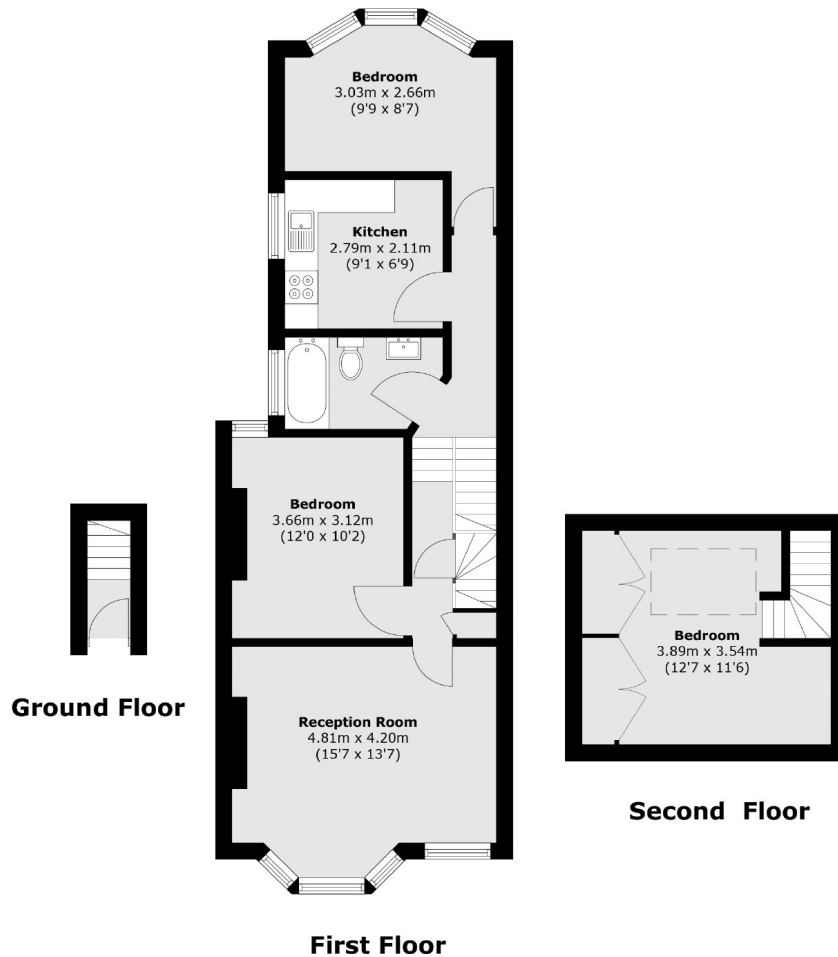
- Newly Refurbished
- Multiple Occupants
- Three Double Bedrooms
- Split Level
- Separate Fitted Kitchen
- Quiet Residential Street



Albacore Crescent, SE13



# Albacore Crescent, London, SE13



Total area (approx.): 83.6 sq. m (899.8 sq. ft)