



16 Winifred Road, Neath – SA10 6HY
Neath

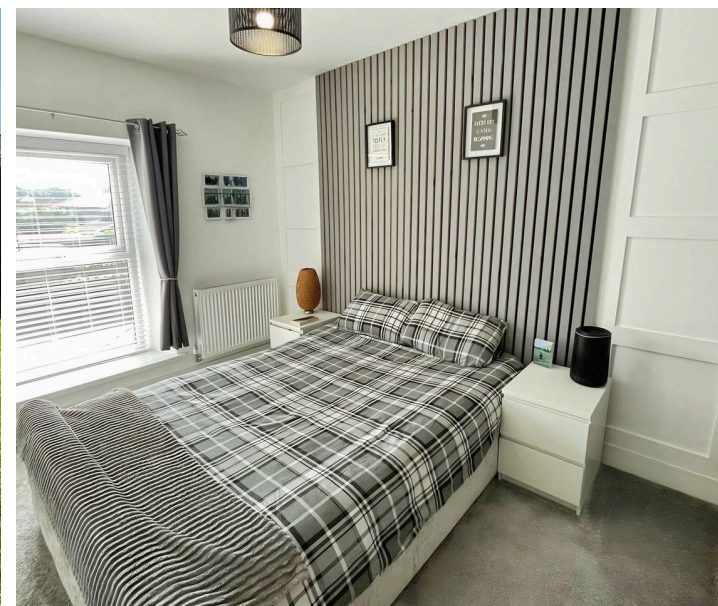
£210,000

16 Winifred Road

Neath

Step inside this well presented three bedroom end of terrace house, perfect for anyone looking for a comfortable and stylish home. As you enter, you'll find a spacious lounge that flows into a separate dining room, ideal for entertaining friends or relaxing with family. The kitchen doubles as a family room, offering plenty of space for cooking, casual meals, or catching up over coffee. There's a handy downstairs WC, making life a little easier for busy households or guests. Upstairs, you'll find three good sized bedrooms, each with plenty of natural light, and a modern family bathroom. The property has been thoughtfully maintained throughout, so you can move straight in without any hassle. With a practical layout and a welcoming feel, this house makes a fantastic choice for first time buyers or young families. Don't miss your chance to make this lovely house your new home.

- Three bedroom end terraced house
- Well presented throughout
- Lounge and dining room
- Kitchen / family room
- Downstairs WC and first floor bathroom
- Well maintained rear garden





Entrance porch

2' 11" x 3' 10" (0.90m x 1.17m)

Via composite door and laminate flooring.

Lounge

12' 6" x 10' 10" (3.82m x 3.30m)

Fitted carpet, PVCu window, radiator and feature electric fireplace.

Dining room

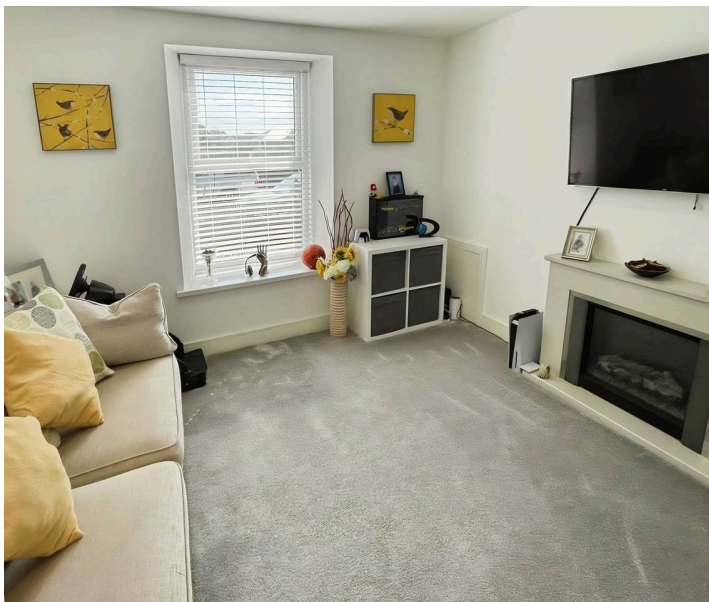
11' 7" x 11' 10" (3.52m x 3.60m)

Stairs with glass balustrade, laminate flooring, radiator, wood panelling, under stairs storage and feature overhead lighting. Opening into the kitchen/family room.

Kitchen/family room

22' 0" x 11' 2" (6.70m x 3.40m)

PVCu bi-fold doors overlooking the garden, PVCu window, radiator and laminate flooring. Feature overhead lighting above the breakfast bar, integrated hob, oven and dish washer, fridge/freezer and extractor fan. A range of modern wall and base units.



Utility room

5' 11" x 4' 11" (1.80m x 1.50m)

Composite door to the rear garden, PVCu window overlooking the garden, radiator, laminate flooring, sink and space for washing machine and boiler.

Downstairs WC

2' 11" x 6' 7" (0.90m x 2.00m)

Laminate flooring and radiator. Two piece suite comprising WC and wash hand basin.

Landing

12' 2" x 5' 3" (3.70m x 1.60m)

Fitted carpet, feature glass balustrade and radiator.

Bedroom 2

8' 6" x 11' 2" (2.60m x 3.40m)

Fitted wardrobes, fitted carpet and PVCu window.

Bathroom

8' 6" x 7' 7" (2.60m x 2.30m)

Four piece suite comprising freestanding bath, shower, WC and wash hand basin. PVCu opaque window and heated towel rail.

Bedroom 3

5' 3" x 9' 10" (1.60m x 3.00m)

Radiator, PVCu window and fitted carpet.

Bedroom 1

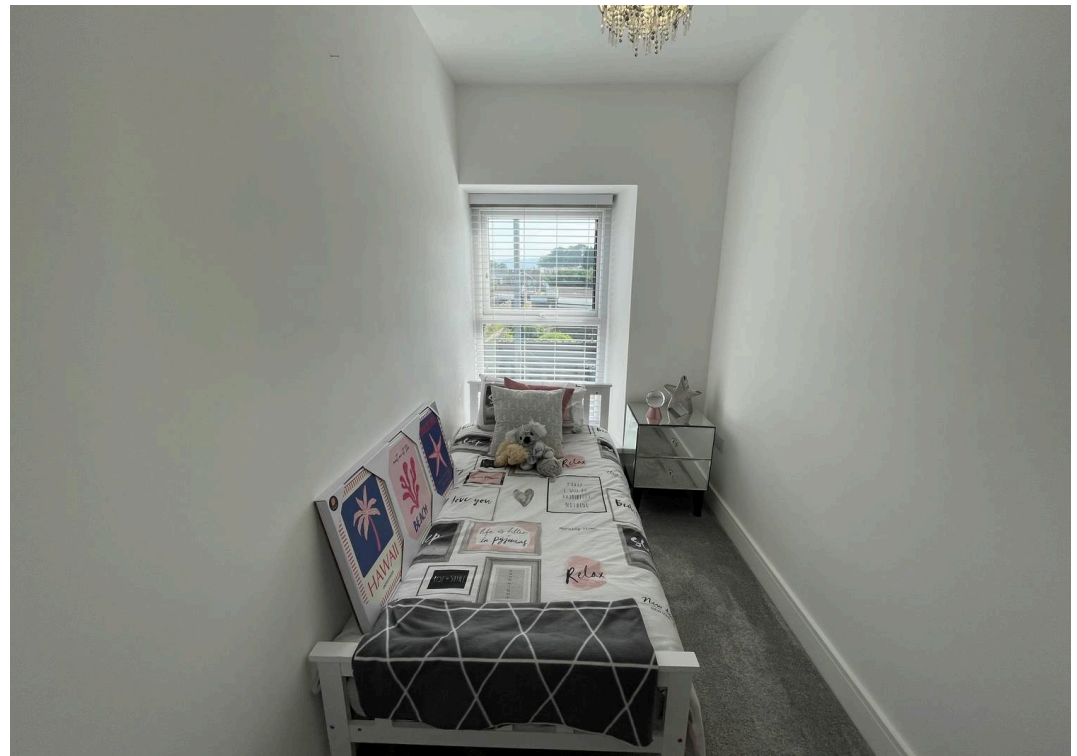
8' 6" x 13' 1" (2.60m x 4.00m)

Fitted wardrobes, radiator, feature panelling and PVCu window.

Outside

On street parking to the front. Courtyard front garden laid to pebble and stone. Well maintained rear garden laid to decking off the b-fold doors with shrub and flowers along the borders. Space for hot tub.







Payton Jewell Caines

Payton Jewell Caines, 53 Station Road – SA13 1NW

01639891268 • porttalbot@pjchomes.co.uk • pjchomes.co.uk/

These property details are provided as a general guide only. Whilst we aim for accuracy, measurements, photographs, floor plans, and descriptions should not be relied upon as statements of fact. Buyers should carry out their own checks regarding the property, services, and specifications. Fixtures and fittings are only included if specifically stated. Appliances and services have not been tested.