



## WILLIAM ROAD, SW19

£750,000

Recently renovated  
16ft reception room  
Three double bedrooms  
Two bathrooms  
Sought after road  
Energy rating: c

@marshandparsons  
marshandparsons.co.uk

MARSH &  
PARSONS

# ABOUT THE PROPERTY

This rarely available, beautifully refurbished and extended three bedroom split-level flat offers 1,038 sq ft of bright, versatile living space, arranged over the upper floors of an attractive Victorian house on a cul de sac, sought-after tree-lined road.

William Road is a quiet residential street just off Dundonald Road, only a stone's throw away from Dundonald Recreation Ground and moments from Dundonald Primary School and Wimbledon Chase Primary School. Wimbledon Town Centre is a 9 minute walk away, offering an excellent choice of restaurants, cafés and bars, together with superb transport links from Wimbledon mainline station and the District line.





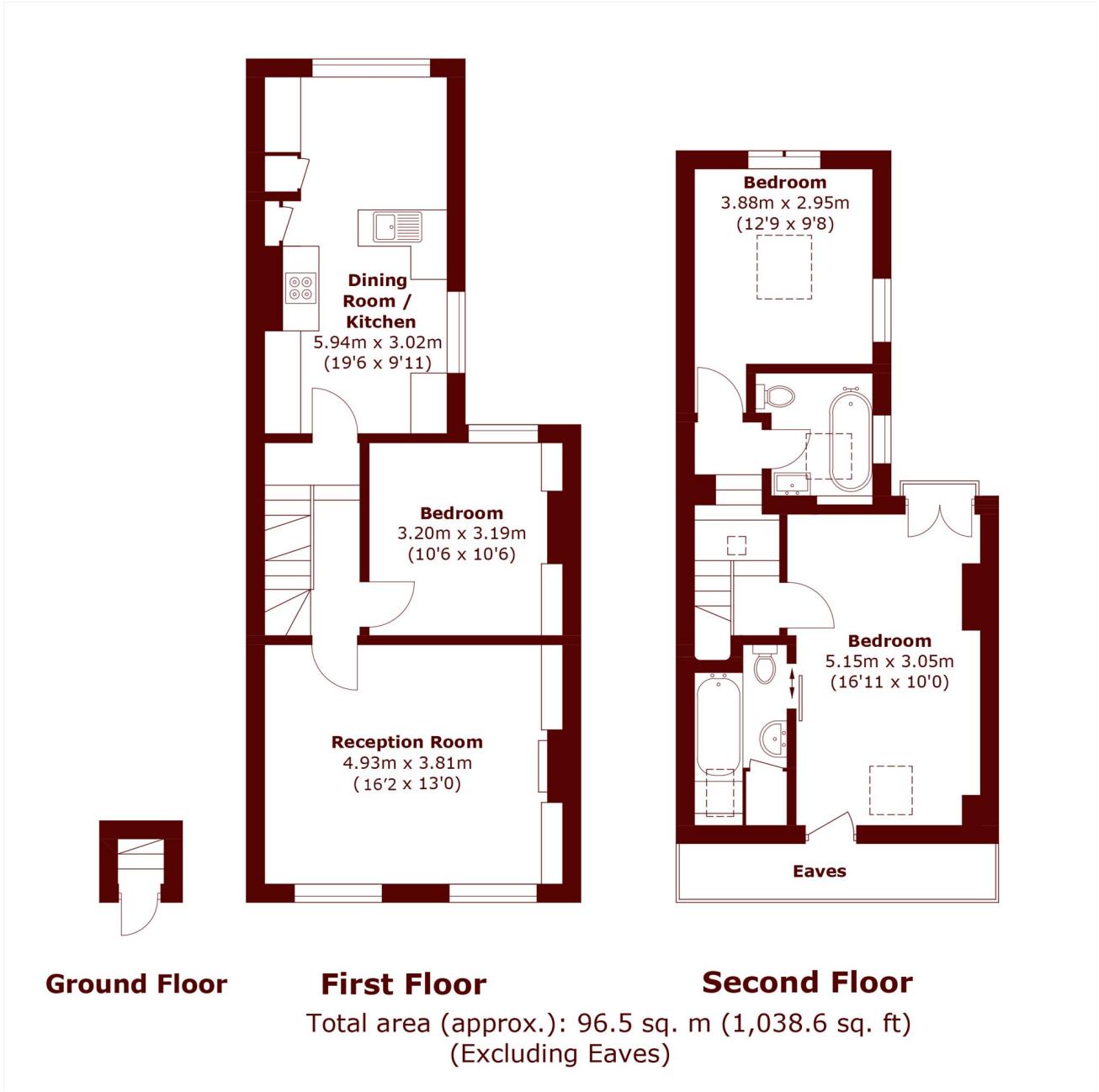


# FURTHER DETAILS

The property features three generous double bedrooms, a stylish en suite to the principal bedroom, a further family bathroom, a spacious 16 ft reception room, and a superb kitchen with built-in banquette seating and large bifold windows that fill the space with natural light.



# STEP INSIDE WILLIAM ROAD



Wimbledon  
020 8879 6660

Energy Rating: C We aim to make our particulars both accurate and reliable. However, they are not guaranteed; nor do they form part of an offer or contract. If you require clarification on any points then please contact us, especially if you're traveling some distance to view. Please note that appliances and heating systems have not been tested and therefore no warranties can be given as to their good working order

MARSH &  
PARSONS