



OATLANDS DRIVE  
WEYBRIDGE

JACKSON-STOPS 

## OATLANDS DRIVE WEYBRIDGE, KT13

ASKING PRICE: £595,000

A spacious apartment in the well-regarded Albany Court development on Oatlands Drive, offering generous proportions throughout and excellent scope to modernise and add value. The standout feature is the impressive reception room, extending over 30ft in length, providing flexible living and dining space with direct access onto a large private balcony overlooking beautifully maintained communal gardens.

The property offers three well-proportioned bedrooms, a separate kitchen, bathroom and additional cloakroom, making it an ideal option for downsizers, families or buyers seeking lateral space rarely found in apartments locally. Further benefits include allocated parking, attractive communal grounds and the advantage of no onward chain, allowing for a straightforward purchase.

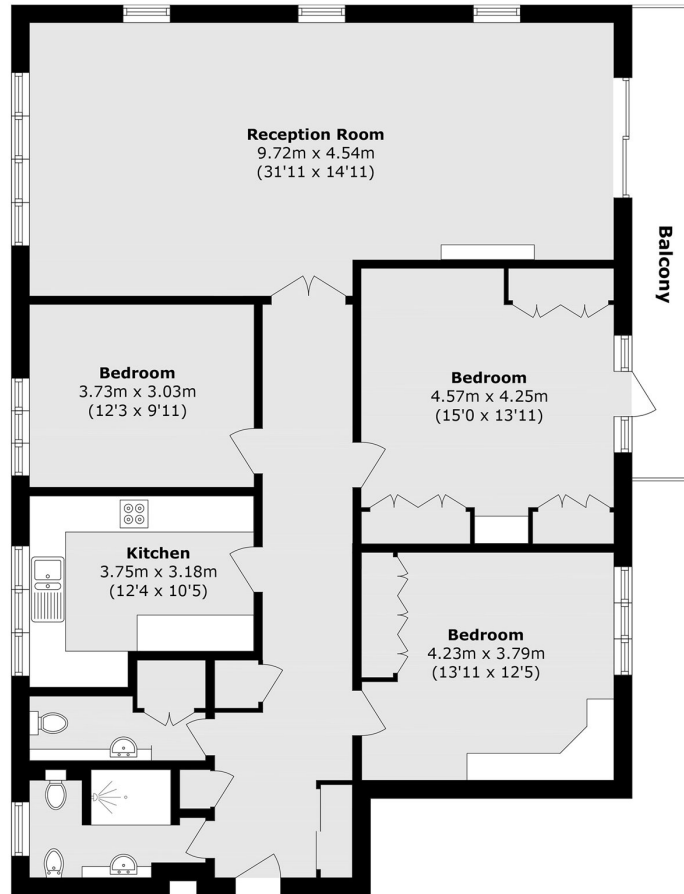
Albany Court is ideally positioned on Oatlands Drive, conveniently located for both Weybridge town centre and Walton-on-Thames. The area offers a superb selection of shops, cafés and restaurants, while nearby green spaces and riverside walks add to its appeal. Weybridge station provides regular services to London Waterloo.

### KEY FEATURES

- No onward chain
- Over 1,400 SqFt
- Large private balcony
- Communal gardens
- Three bedrooms
- Parking







Total area (approx.): 130.9 sq. m (1399.3 sq. ft)

Balcony area (approx.): 9.0 sq. m (96.8 sq. ft)

Energy Rating: C. We aim to make our particulars both accurate and reliable. However they are not guaranteed; nor do they form part of an offer or contract. If you require clarification on any points then please contact us, especially if you are travelling some distance to view. Please note that appliances and heating systems have not been tested and therefore no warranties can be given as to their good working order.

**ASKING PRICE: £595,000**

WEYBRIDGE

01932 821 160

weybridge@jackson-stops.co.uk

jackson-stops.co.uk

**JACKSON-STOPS** 