



## Fellows Road, NW3

£465,000

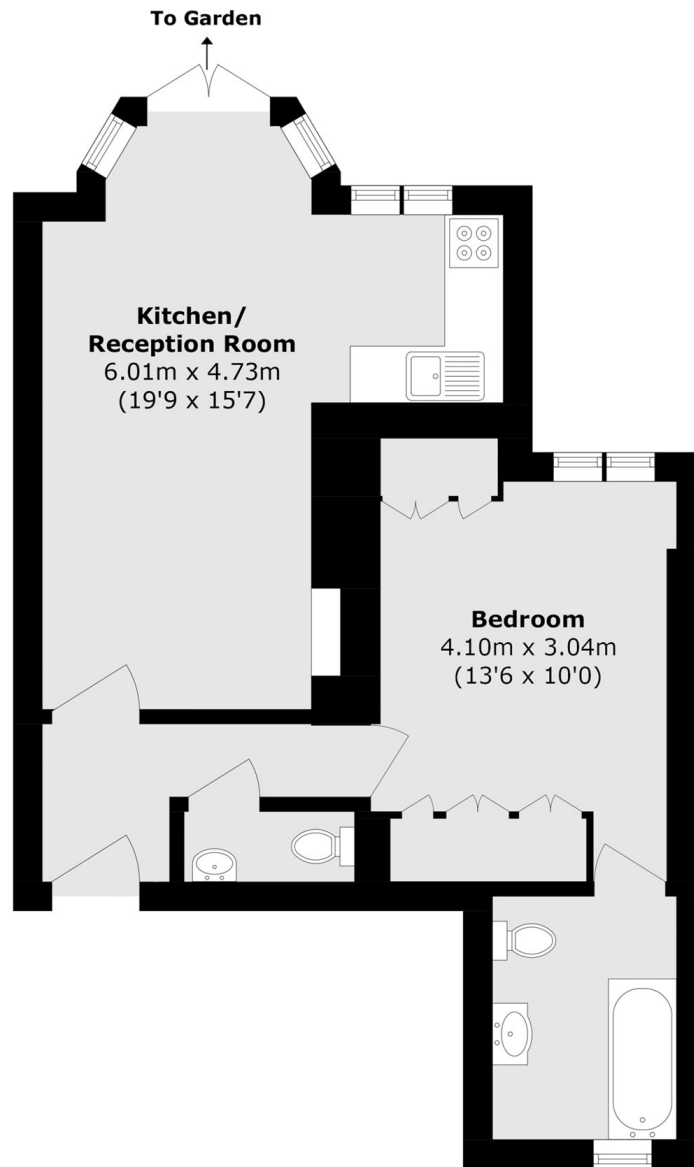
A bright one bedroom ground floor apartment with direct access to a shared garden, offered chain free. The property has an en suite bathroom plus a guest WC and is in good condition throughout. It also benefits from a long lease.

Fellows Road is ideally positioned between Belsize Park and Swiss Cottage, offering easy access to local cafés, shops, and amenities. The open spaces of Primrose Hill and Regent's Park are nearby. Excellent transport links include Swiss Cottage underground station (Jubilee line) and Belsize Park underground station (Northern line).

### Features

- One Double Bedroom
- Chain Free
- Shared Garden
- Good Condition
- Open Plan Kitchen/Living
- Long Lease

# Fellows Road, London, NW3



Total area (approx.): 46.4 sq. m (499.4 sq. ft)

**Dexters**

Hampstead  
56 Heath Street  
London  
NW3 1DL  
Sales  
020 7433 0273

Energy Rating: E. We aim to make our particulars both accurate and reliable. However they are not guaranteed; nor do they form part of an offer or contract. If you require clarification on any points then please contact us, especially if you're traveling some distance to view. Please note that appliances and heating systems have not been tested and therefore no warranties can be given as to their good working order.

 **RICS** | Regulated  
Estate Agent  
and Letting Agent

[dexters.co.uk](http://dexters.co.uk)