



Randolph Road, Epsom

Guide Price **£449,999**



Randolph Road

Epsom

Stunning 2-bed ground floor flat in College Area offers stylish living with private SE facing garden. 2 double beds, kitchen/breakfast room, spacious reception, modern shower room & cellar. Close to town centre and station. Call to view!

Council Tax band: D

Tenure: Leasehold

EPC Energy Efficiency Rating: D

EPC Environmental Impact Rating: G

- Sought After College Area
- Long Lease With No Service Charges
- Separate Entrance Ground Floor Flat
- Private Front & Back Gardens
- Two Double Bedrooms
- Kitchen/Breakfast Room
- Bright & Spacious Reception
- Modern Shower Room
- Cellar
- Close To Town Centre & Station



Nestled in the sought-after College Area, awaits a stunning 2-bedroom ground-floor flat with its own separate entrance, presenting an exceptional opportunity for those seeking stylish contemporary living.

Boasting a long lease with no service charges, this beautifully presented residence comprises two double bedrooms, an inviting kitchen/breakfast room, and a bright & spacious reception area with high ceilings and period features. The modern shower room and separate W.C. adds a touch of luxury, while the cellar provides additional storage space.

Step outside to discover the charm of your own south-east facing garden to the back, with another private garden fronting the property, both tailored for outdoor relaxation and al fresco dining, creating a seamless extension of your living space.

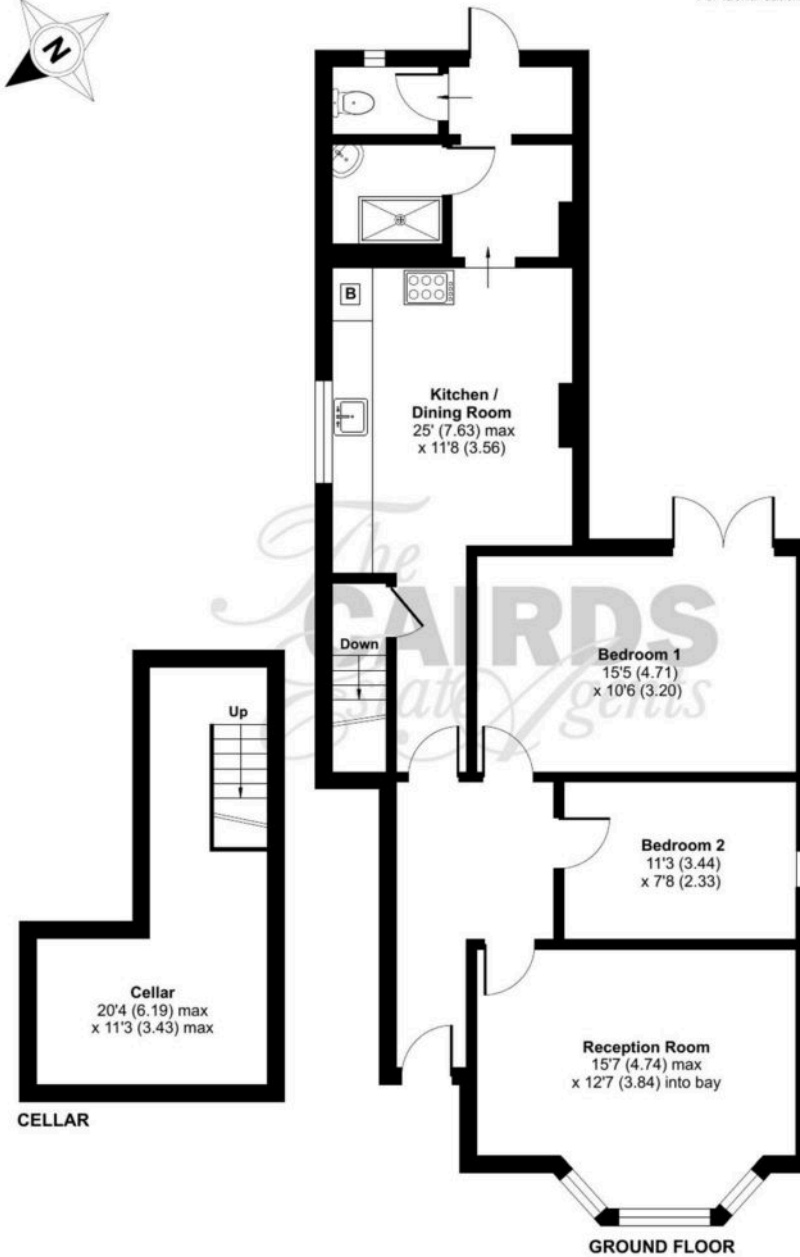
Conveniently situated close to the town centre and station, this flat is the epitome of modern convenience blended with timeless elegance.

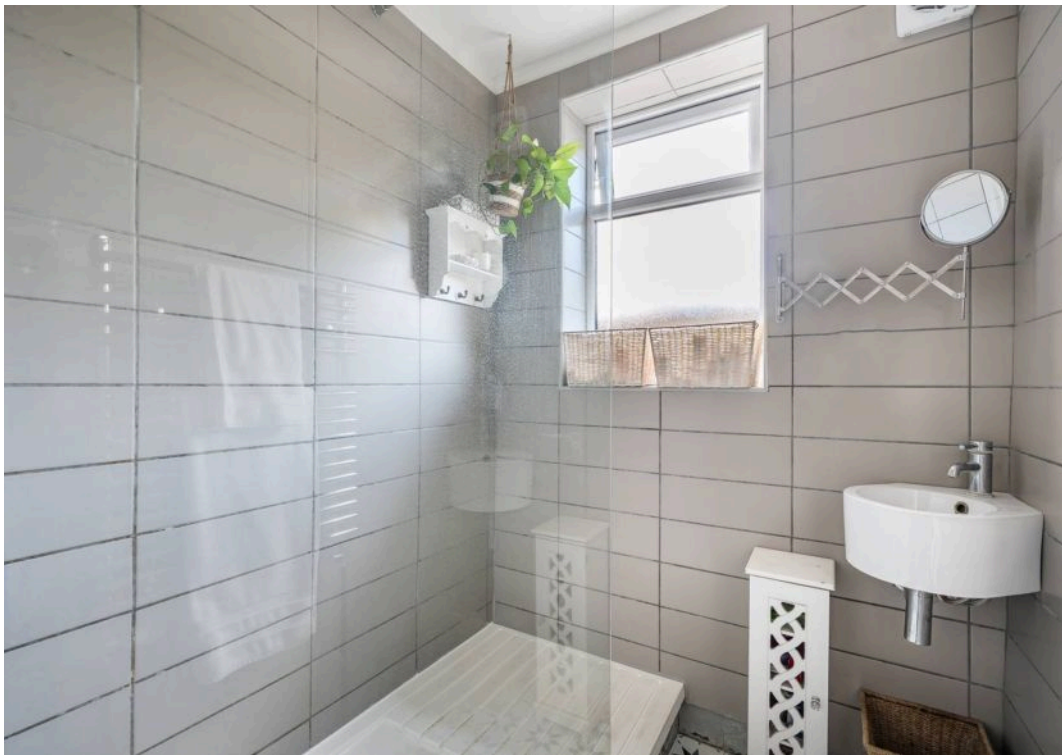
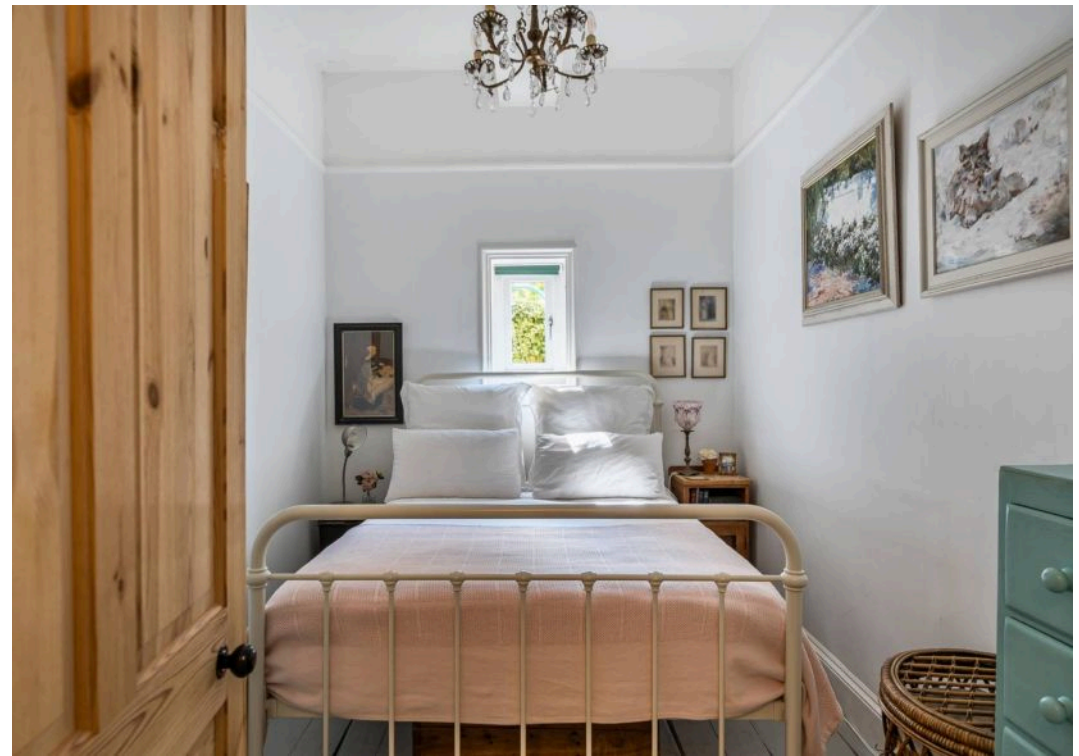
Get in touch today to experience this fabulous property first-hand!

Randolph Road, Epsom, KT17

Approximate Area = 1036 sq ft / 96.2 sq m

For identification only - Not to scale







Cairds The Estate Agents

Cairds The Estate Agents, 128-130 High Street - KT19 8BT

01372 743033 • homes@cairds.co.uk • www.cairds.co.uk