



Gibbon Walk, SW15

£740,000

Dexters



Gibbon Walk, SW15

A well-presented three bedroom family home arranged over two floors, offering approximately 956 sq ft of bright and well-balanced living space.

The ground floor features a generous reception room with direct access to the South facing garden, a well-proportioned kitchen, and excellent storage. Upstairs are three bedrooms and a family bathroom, making the layout ideal for families or those needing flexible home-working space.

Externally, the property benefits from a large private decked garden, perfect for entertaining and outdoor dining.

Gibbon Walk is a quiet residential turning ideally located for the amenities of Putney and Roehampton, with easy access to green open spaces including Richmond Park, Putney Heath and Wimbledon Common. Excellent transport links are close by, with Putney Station (National Rail), East Putney Underground (District Line) and a variety of well-connected bus routes providing convenient access into Central London and beyond.

(*These photos have been virtually staged, please rely on the floorplan and your own measurements regarding exactly how furniture would fit in each room)

Features

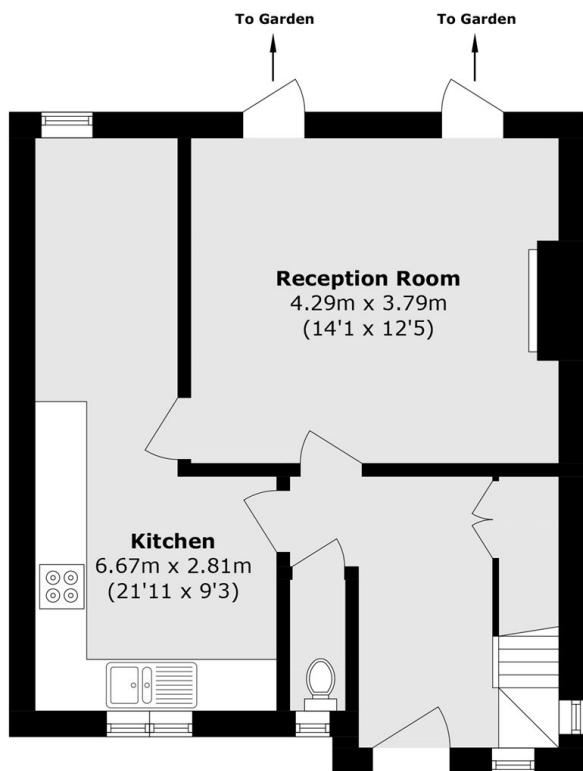
- Three Bedrooms
- One Bathroom
- Potential to Extend (STP)
- Chain Free
- Large Garden
- Freehold



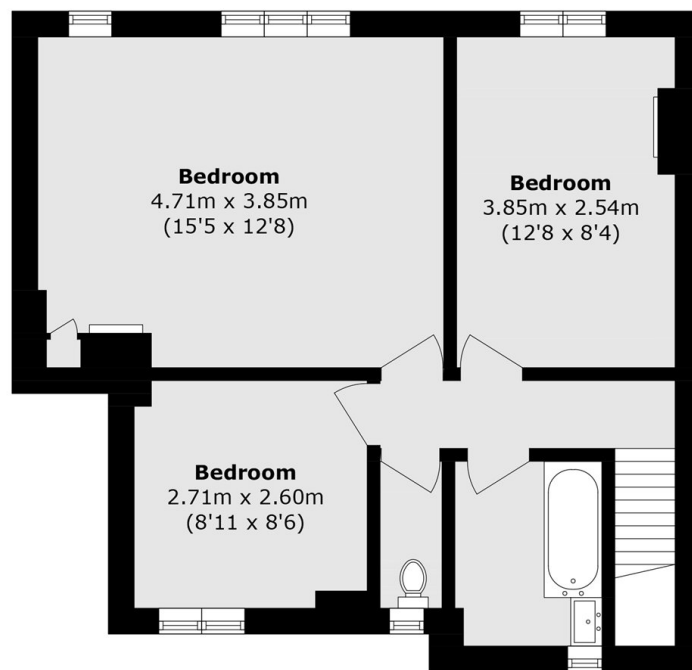




Gibbon Walk, London, SW15



Ground Floor



First Floor

Total area (approx.): 88.8 sq. m (955.8 sq. ft)