



17 Austen Road, Stratford-Upon-Avon

Offers Over **£170,000**

**SHELDON
BOSLEY
KNIGHT**

LAND AND
PROPERTY
PROFESSIONALS

17 Austen Road

Stratford-Upon-Avon, Stratford-Upon-Avon

No onward chain. First floor apartment with two double bedrooms (one en-suite), open plan lounge, separate kitchen, main bathroom, allocated parking, and strong rental history.

Council Tax band: C

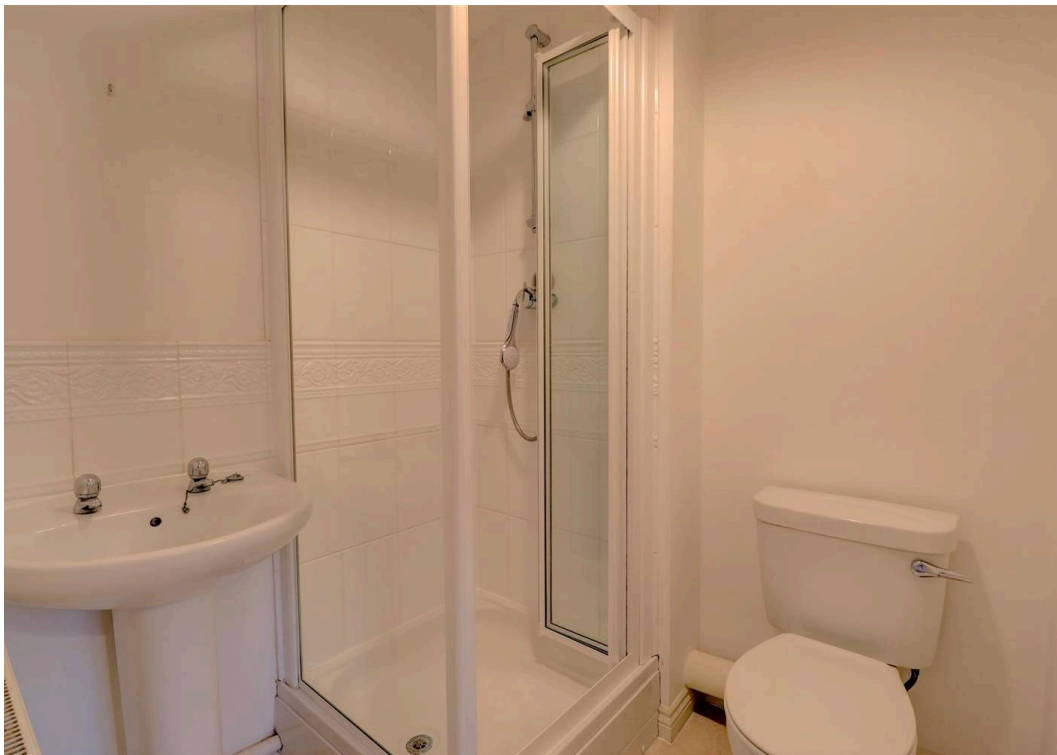
Tenure: Leasehold

EPC Energy Efficiency Rating: C

EPC Environmental Impact Rating: B

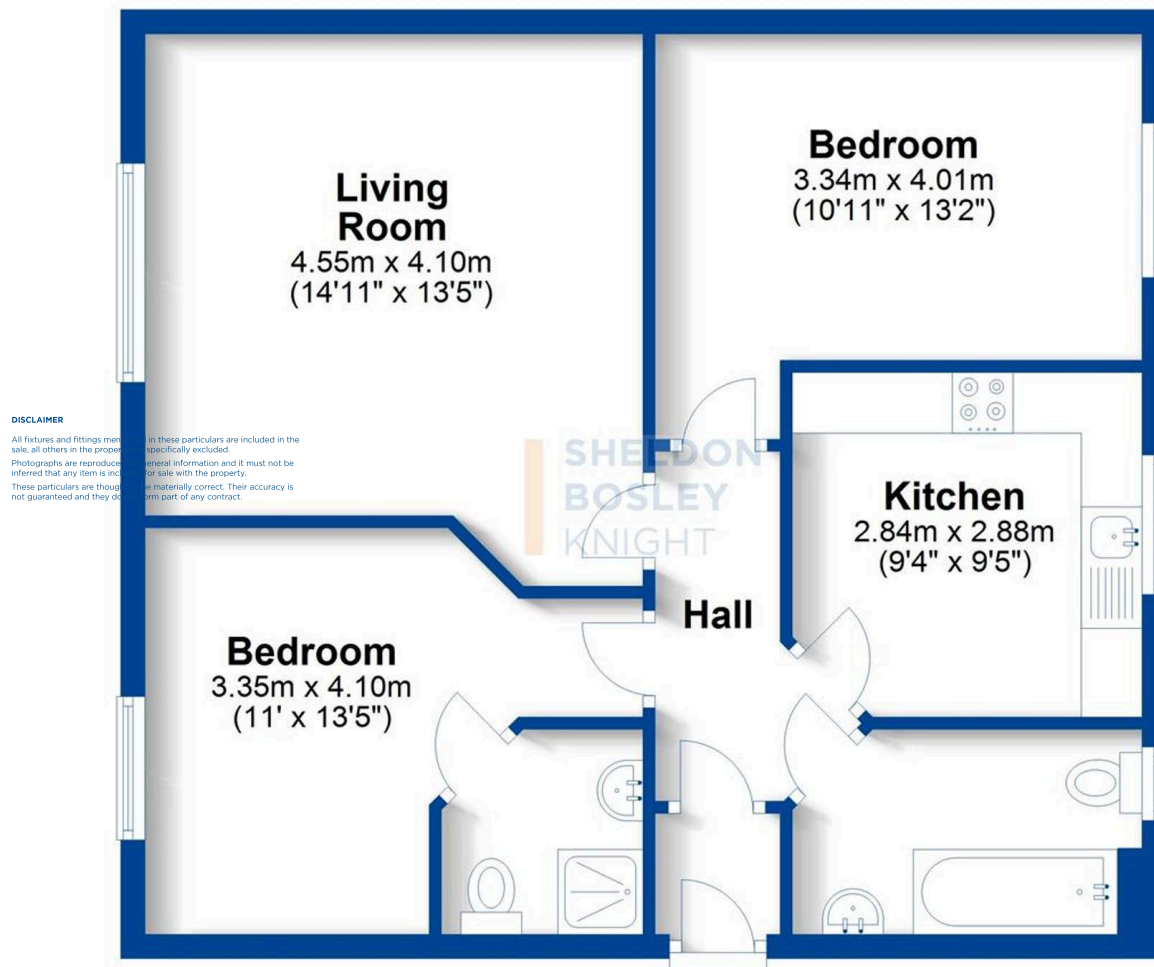
- Popular Location
- First Floor Apartment
- 2 Bedrooms
- En-Suite & Separate Bathroom
- Open Plan Lounge Diner
- Separate Kitchen
- Allocated Parking
- Ideal First Time Buy Or Investment Purchase
- No Onward Chain





First Floor

Approx. 60.9 sq. metres (655.7 sq. feet)



Total area: approx. 60.9 sq. metres (655.7 sq. feet)

This plan is for illustration purposes only and should not be relied upon as a statement of fact
Property of Sheldon Bosley Knight Limited. Not to be reproduced

Sheldon Bosley Knight Stratford-Upon-Avon

Sheldon Bosley Knight, 35-36 Rother Street - CV37 6LP

01789387887 · stratfordsales@sheldonbosleyknight.co.uk · www.sheldonbosleyknight.co.uk/

DISCLAIMER

All fixtures and fittings mentioned in these particulars are included in the sale, all others in the property are specifically excluded.

Photographs are reproduced for general information and it must not be inferred that any item is included for sale with the property.

These particulars are thought to be materially correct. Their accuracy is not guaranteed and they do not form part of any contract.