



# Wandsworth Common West Side

London, SW18

£2,500 per month  
(£576.92 per week)

Well-presented split level two bedroom apartment located in an ideal location just off of Wandsworth Common on a quiet residential street.

CHESTERTONS





# Wandsworth Common West Side

## London, SW18

- 2 Double Bedrooms
- Unfurnished
- Great location
- Wandsworth Common
- Great Transport Links

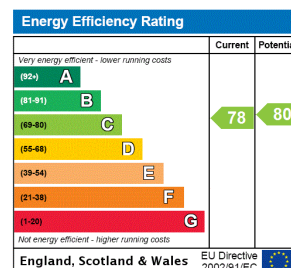


Well-presented split level two bedroom apartment located in an ideal location just off of Wandsworth Common on a quiet residential street.

As you enter the property you are welcomed to the right by the spacious living room leading to a separate kitchen, a double bedroom. You go down a few steps and you find the bathroom with a bath , and the second double bedroom with built-in storage units.

Wandsworth Common West Side is a popular location and offers residents easy access to shopping facilities, cafes, restaurants. The property is within easy reach to Wandsworth Town Station and

**Minimum Term:** 6 months  
**Deposit Required:** £2,884.62  
**Local Authority:** London Borough of Wandsworth  
**Council Tax Band:** E  
**EPC Rating:** C  
**Unfurnished**



### Chestertons Wandsworth Lettings

11 Huguenot Place  
 London  
 SW18 2EN  
 wandsworth@chestertons.co.uk  
 02081047540  
 chestertons.co.uk

Additional tenant charges apply (fees apply to non-AST tenancies only)  
 Tenancy Agreement Fee: £300  
 References per Tenant/Guarantor: £60  
 Inventory check (approx. £100 – £250 inc. VAT)  
 chestertons.co.uk/property-to-rent/applicable-fees

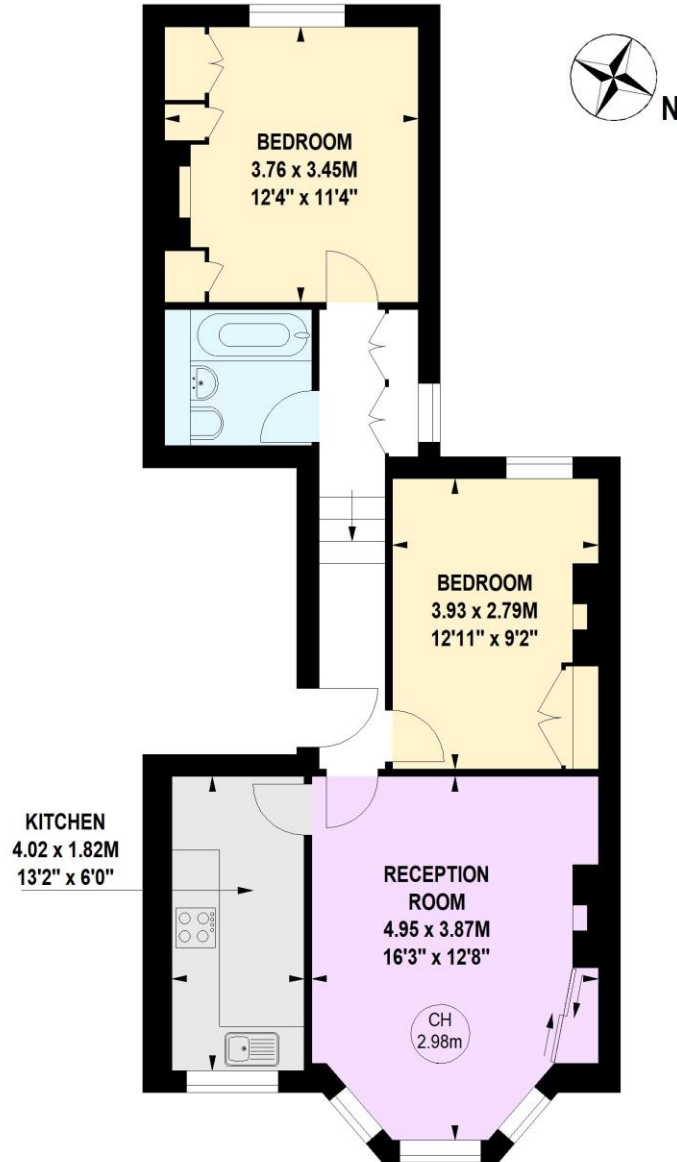


# Wandsworth Common West Side, SW18

Approximate gross internal area

Key :  
CH - Ceiling Height

60.76 sq m / 654 sq ft



## First Floor

Not to scale, for guidance only and must not be relied upon as a statement of fact.  
All measurements and areas are approximate only

