



Severn Close, Ripley, DE5 9TZ

Asking Price Of £230,000

- NO UPWARDS CHAIN - MODERN THREE BEDROOM SEMI DETACHED FAMILY HOME WITH AIR CONDITIONING/EV CHARGER, SPACIOUS LOUNGE/DINER, MODERN KITCHEN/BATHROOM, OFF ROAD PARKING AND LARGE ENCLOSED GARDEN - SMARTMOVE HOMES are delighted to bring to the market this beautiful property situated on a sought after Peveril development briefly comprising of entrance hallway, downstairs WC, spacious lounge/diner and modern fitted kitchen to the ground floor. To the first floor landing there are three good sized bedroom and a modern fitted bathroom suite, outside there is a large enclosed rear garden and off road parking to side for two/three vehicles. To book a viewing please contact Smartmove Homes as soon as possible.



Property Description

- NO UPWARDS CHAIN - MODERN THREE BEDROOM SEMI DETACHED FAMILY HOME WITH AIR CONDITIONING/EV CHARGER, SPACIOUS LOUNGE/DINER, MODERN KITCHEN/BATHROOM, OFF ROAD PARKING AND LARGE ENCLOSED GARDEN - SMARTMOVE HOMES are delighted to bring to the market this beautiful property situated on a sought after Peveril development briefly comprising of entrance hallway, downstairs WC, spacious lounge/diner and modern fitted kitchen to the ground floor. To the first floor landing there are three good sized bedroom and a modern fitted bathroom suite, outside there is a large enclosed rear garden and off road parking to side for two/three vehicles. To book a viewing please contact Smartmove Homes as soon as possible.

GROUND FLOOR

ENTRANCE HALLWAY

Door to the front elevation, radiator and Karndean floor. Stair leading up to the first floor landing.

DOWNSTAIRS WC

WC, wash basin with removable storage underneath, radiator and extractor fan.

FITTED KITCHEN

Modern fitted kitchen with matching wall and base units, workshop with inset stainless steel sink and drainer, built-in

SPACIOUS LOUNGE/DINER

Spacious light filled room with French doors accessing the garden, window to the side elevation, two radiators, air conditioning unit and access to the under stairs storage cupboard.





FIRST FLOOR LANDING

Loft access and airing cupboard.

MASTER BEDROOM

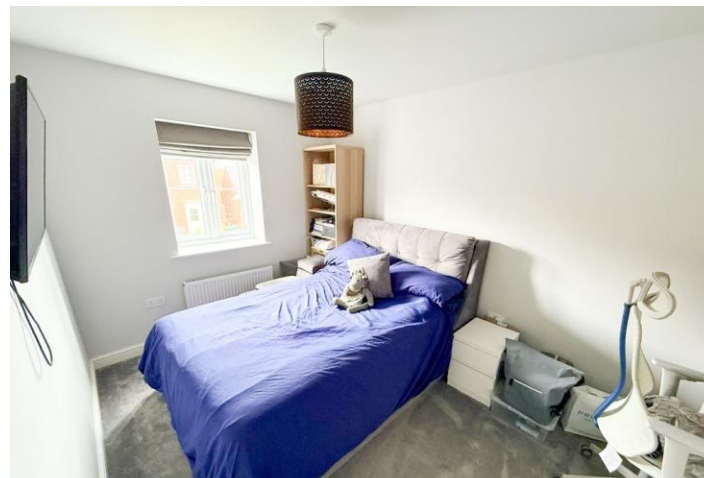
Large double bedroom with window to the front elevation, air-conditioning unit, radiator and fitted wardrobes.

BEDROOM TWO

Double bedroom with window to the rear elevation, radiator and recess for wardrobes.

BEDROOM THREE

Good sized third bedroom with window to the rear elevation and radiator.



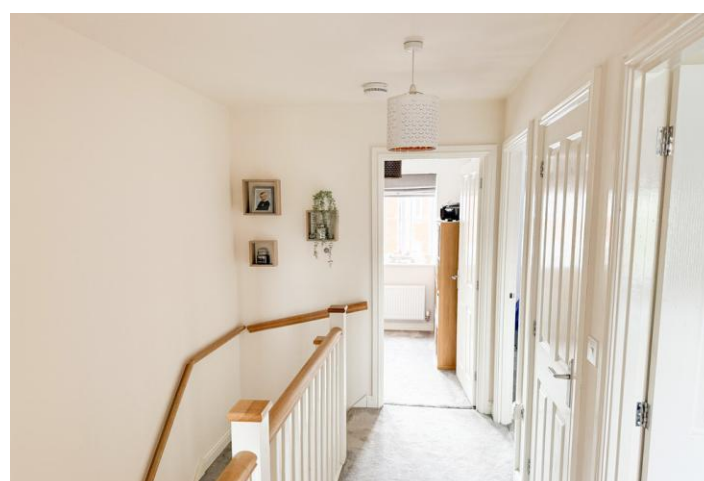
FAMILY BATHROOM

Modern three piece bathroom suite including a fitted bath, wash basin and WC. Obscure window to the front elevation, heated towel rail, tiled splash backs and extractor fan.

OUTSIDE

ENCLOSED GARDEN

Large enclosed garden with laid lawn, two patio seating areas, space for a shed, outside water tap and lighting.



OFF ROAD PARKING

Off road parking for two/three vehicles on a tarmac driveway.

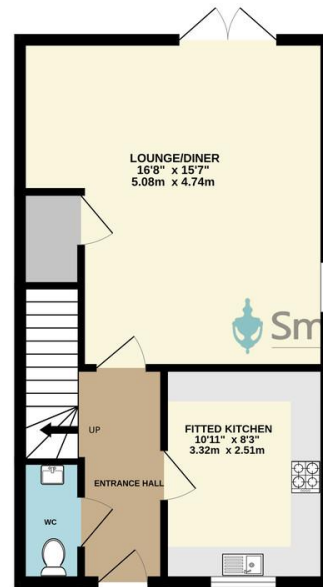
EPC / TENURE

EPC - B

COUNCIL TAX - C

TENURE - FREEHOLD WITH MANAGMENT FEE

GROUND FLOOR
429 sq.ft. (39.9 sq.m.) approx.



1ST FLOOR
427 sq.ft. (39.7 sq.m.) approx.



TOTAL FLOOR AREA: 856 sq.ft. (79.5 sq.m.) approx.

Whilst every attempt has been made to ensure the accuracy of the floorplan contained herein, measurements of doors, windows, rooms and any other items are approximate and no responsibility is taken for any error, omission or mis-statement. This plan is for illustrative purposes only and should be used as such by any prospective purchaser. The services, systems and appliances shown have not been tested and no guarantee as to their operability or efficiency can be given.
Made with Metropix ©2026

1 High Street, Ripley,
Derbyshire, DE5 3AA

www.smartmovehomes.co.uk
01773 570055
sales@smartmovehomes.co.uk

Agents Note: Whilst every care has been taken to prepare these sales particulars, they are for guidance purposes only. All measurements are approximate and for general guidance purposes only and whilst every care has been taken to ensure their accuracy, they should not be relied upon and potential buyers are advised to recheck the measurements

