

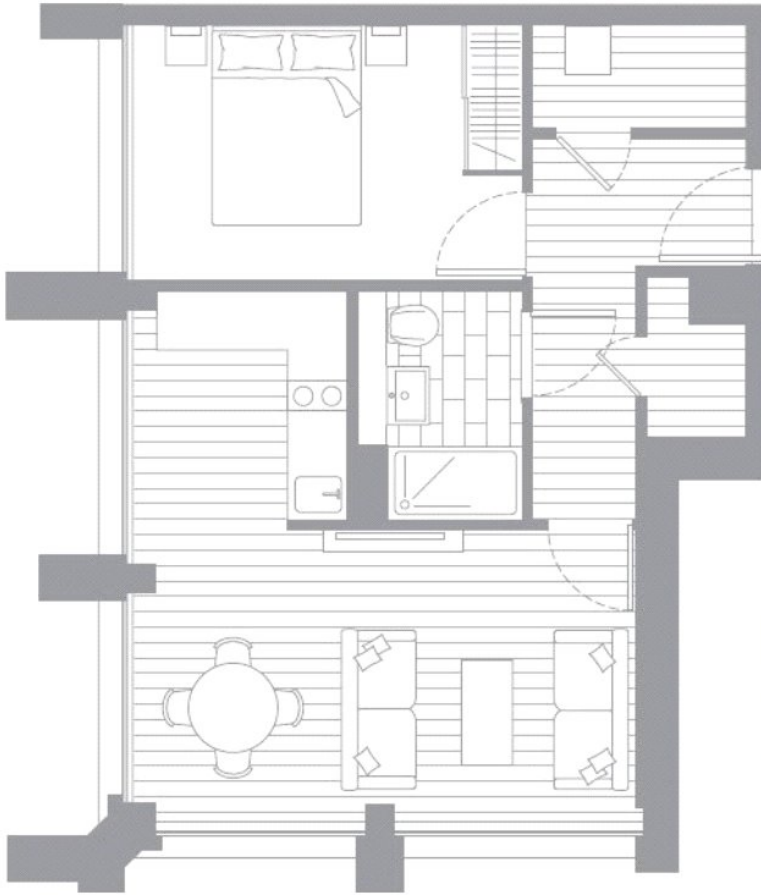


RIVERDALE HOUSE, SE13

£250,000

****Offers Over £250,000*** A modern build 1 bedroom apartment measuring 470 Sq.ft located on the 3rd floor of the sought after Riverdale House development. The property comprises an open plan living area and kitchen with integrated appliances, a spacious double bedroom and a modern bathroom suite.

- Concierge Service
- Communal Roof Terrace
- Ground Rent: £350
- Service Charge: £3,999



Living/dining	5.0 x 2.9m	16'4" x 9'6"
Kitchen area	2.3 x 2.1m	7'6" x 6'10"
Bedroom	3.8 x 2.5m	12'6" x 8'2"
Total area	44.2 sq.m.	476 sq.ft.

LiFE RESIDENTIAL

6 Victoria Parade, London,
SE10 9FR
Sales: 020 8446 2521
Lettings: 020 8418 3609

Energy Rating: C. We aim to make our particulars both accurate and reliable. However they are not guaranteed; nor do they form part of an offer or contract. If you require clarification on any points then please contact us, especially if you're traveling some distance to view. Please note that appliances and heating systems have not been tested and therefore no warranties can be given as to their good working order.