



Kew Bridge Development

Belvedere House, TW8

£850,000 Asking Price

Luxurious 5th floor apartment in the prestigious St Georges' waterside development comprising 2 bedrooms, 2 bathrooms, open plan kitchen/reception room, south facing terrace with river views, secure underground parking, gymnasium & 24 hr concierge.

EPC rating C.



Kew Bridge Development

Belvedere House, TW8

- 5th floor apartment with river views
- 2 bed / 2 bath with south facing terrace
- Secure, underground parking - lift serviced
- No onward chain



A spectacular 5th floor apartment enviably positioned within the prestigious Kew Bridge development, offering contemporary living in a designer complex.

Further benefits include a wonderful south facing terrace with river views, underground secure parking, 24 hour concierge and residents gymnasium.

No onward chain.

Tenure: Leasehold - 999 years from the 1 June 2011

Service Charge: £5943

Ground Rent: £325

Energy Efficiency Rating		Current	Potential
Very energy efficient - lower running costs	A		
(92+)	A		
(81-91)	B	83	85
(69-80)	C		
(55-68)	D		
(39-54)	E		
(21-38)	F		
(1-20)	G		
Not energy efficient - higher running costs			
England, Scotland & Wales		EU Directive 2002/91/EC	

Chestertons Kew Sales

306 Sandycombe Road

Kew

Richmond Surrey

TW9 3NG

sales.kew@chestertons.com

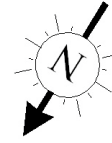
020 8104 0340

chestertons.com

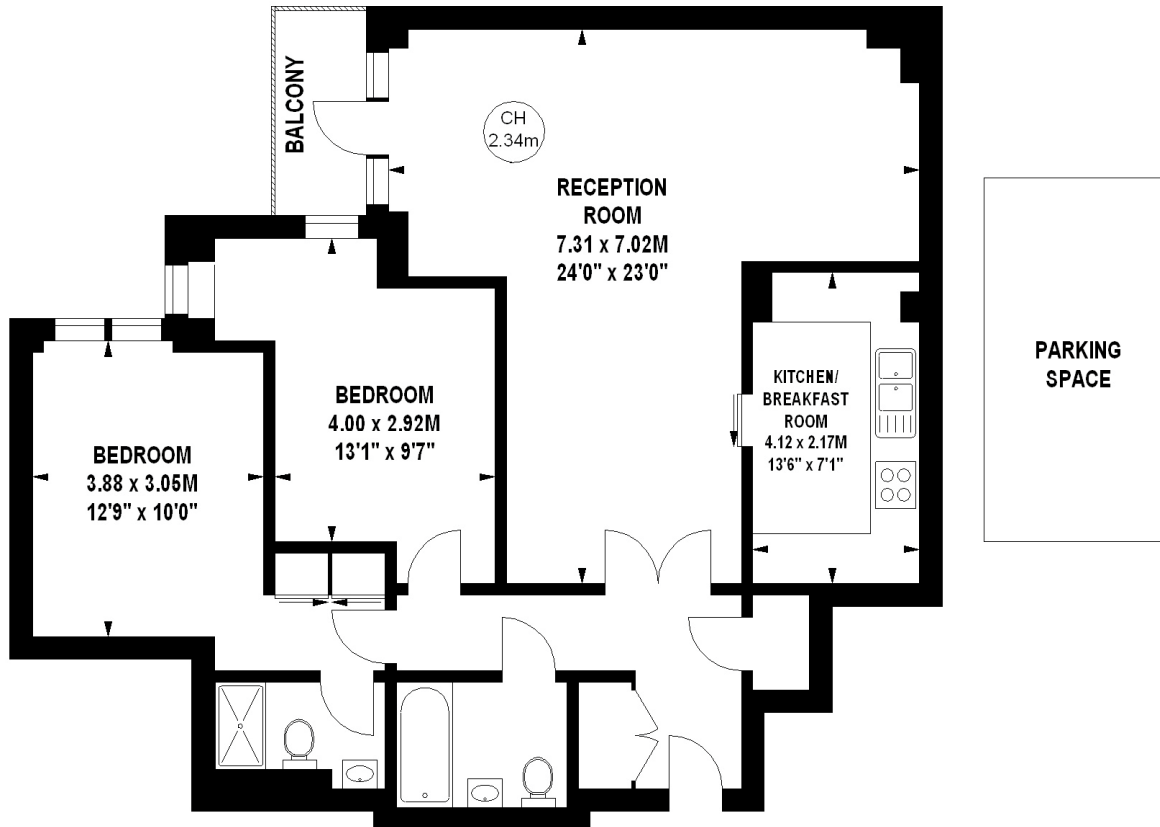
Kew Bridge, TW8

Approximate gross internal area

91.23 sq m / 982 sq ft



Key :
CH - Ceiling Height



Fifth Floor

The floor plan is not to scale and measurements and areas shown are approximate and therefore should be used for illustrative purposes only. The plan has been prepared in accordance with the RICS code of Measuring Practice and whilst we have confidence in the information produced, it must not be relied on. If there is any aspect of particular importance, you should carry out or commission your own inspection of the property.
Copyright of FeaturePRO.