



Shearwater Road, Hemel Hempstead, HP3 0GB

Offers In Excess Of £570,000

Situated in the highly sought after Aspen Park development is this terraced townhouse offered in excellent decorative order throughout. Boasting four bedrooms, en suite to master bedroom, 18'5 modern fitted kitchen with integrated appliances, 15'3 lounge, 15'3 dining/family room, downstairs cloakroom, gas central heating, double glazing, contemporary family bathroom and powered garage with electric car charging point.

Located within easy reach of both Apsley and Hemel Hempstead mainline stations with access to London Euston in only 30 minutes, local shops, restaurants and Two Waters Primary School, Hemel Hempstead town centre and the M1, M25 and A41 road links.

Situated in the desirable area of Shearwater Road, Aspen Park, this beautifully presented four-bedroom townhouse offers a perfect blend of modern living and comfort. The property is part of a sought-after development, making it an ideal choice for families and professionals alike.

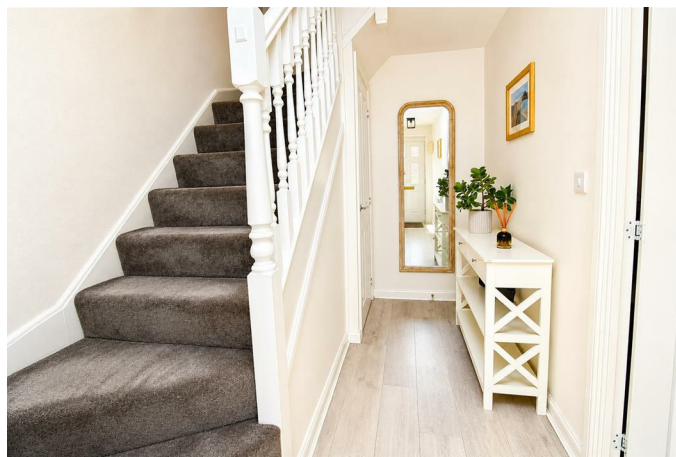
Upon entering, you will be greeted by an impressive 18'5 modern fitted kitchen, complete with integrated appliances, which seamlessly flows into a spacious family and dining room. This open-plan layout is perfect for entertaining guests or enjoying quality time with loved ones. Additionally, there is a separate lounge area with Juliette balcony, providing a versatile space for relaxation.

The master bedroom boasts the luxury of an en suite, ensuring privacy and convenience. The contemporary bathroom suite serves the other bedrooms, while a downstairs cloakroom adds to the practicality of the home.

This townhouse is equipped with gas central heating and double glazing, ensuring warmth and energy efficiency throughout the year. For those with electric vehicles, the property features a powered garage with an electric car charging point, catering to modern needs.

In summary, this four-bedroom townhouse on Shearwater Road is a remarkable opportunity for anyone seeking a stylish and functional home in a prime location. With its well-thought-out design and excellent amenities, it is sure to impress.

Entrance Hall



Modern Fitted Kitchen 18'5 x 8'11 (5.61m x 2.72m)

Family/Dining Room 15'3 x 13'5 (4.65m x 4.09m)



Downstairs Cloakroom



First Floor Landing



Bathroom



Lounge 15'3 x 13'3 (4.65m x 4.04m)



Second Floor Landing



Bedroom Two 15'3 x 11'5 (4.65m x 3.48m)



Bedroom One 15'3 x 13'5 (4.65m x 4.09m)



En Suite



Rear Garden



Bedroom Three 11'9 x 7'8 (3.58m x 2.34m)



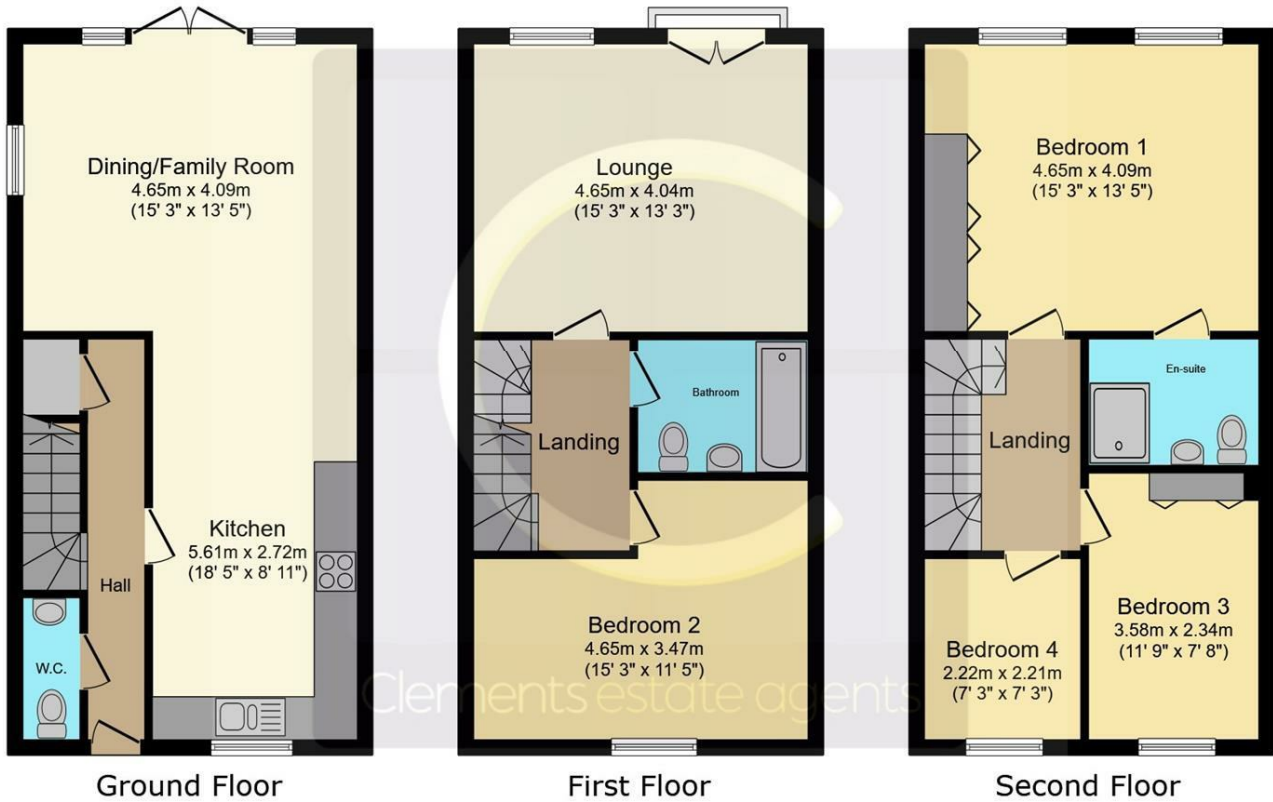
Garage



Bedroom Four 7'3 x 7'3 (2.21m x 2.21m)

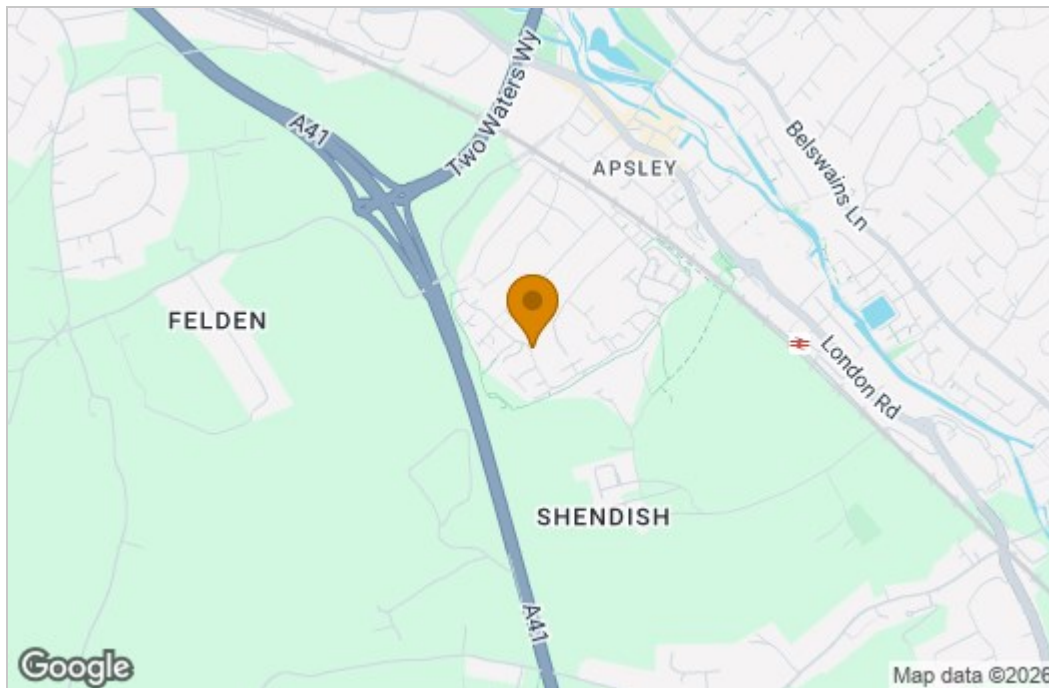


Floor Plan

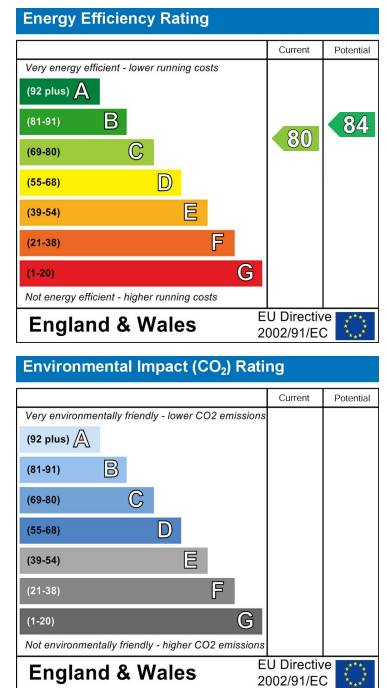


This floor plan is for illustrative purposes only. It is not drawn to scale. Any measurements, floor areas (including any total floor area), openings and orientations are approximate. No details are guaranteed, they cannot be relied upon for any purpose and do not form any part of any agreement. No liability is taken for any error, omission or misstatement. A party must rely upon its own inspection(s). Powered by www.Propertybox.io

Area Map



Energy Efficiency Graph



These particulars, whilst believed to be accurate are set out as a general outline only for guidance and do not constitute any part of an offer or contract. Intending purchasers should not rely on them as statements of representation of fact, but must satisfy themselves by inspection or otherwise as to their accuracy. No person in this firm's employment has the authority to make or give any representation or warranty in respect of the property.