



Oakwood Close, SE13

£285,000

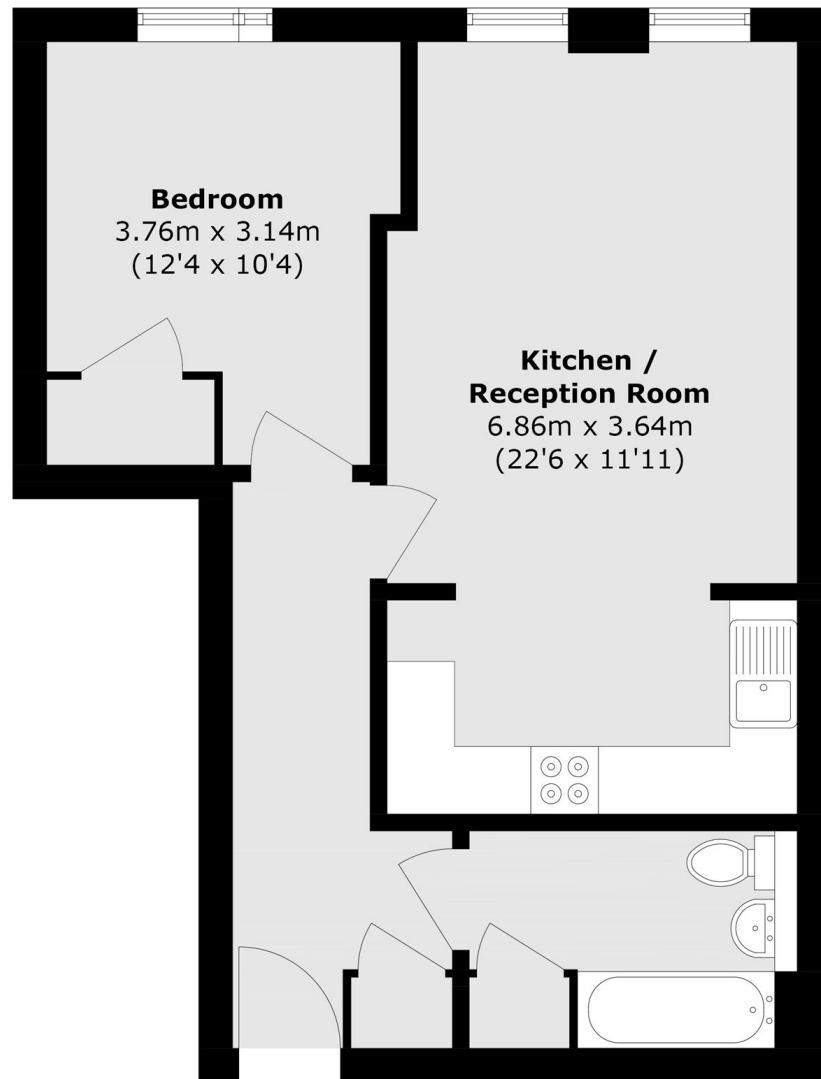
A well presented ground floor apartment in a modern development moments from Hither Green station. There is a large double bedroom, a generous open plan kitchen living space and the benefit of no onward chain.

Oakwood Close is in the popular Meridian South development well positioned for Hither Green station and close to Mountsfield Park.

Features

Well Presented
Large Reception Room
Large Double Bedroom
Ideal For Hither Green Station
Long Lease
Chain Free

Oakwood Close, London, SE13



Total area (approx.): 50.9 sq. m (547.8 sq. ft)