

# DAVID CHARLES

ESTATE AGENTS • VALUERS • SURVEYORS  
THE ESTATE OFFICE • 34 HIGH STREET • PINNER • MIDDLESEX HA5 5PW  
TELEPHONE 020 8866 0222 • FAX 020 8868 3544  
WEBSITE [www.david-charles.co.uk](http://www.david-charles.co.uk) • E-MAIL [pinner-sales@david-charles.co.uk](mailto:pinner-sales@david-charles.co.uk)

## BRIDGE STREET, PINNER, MIDDLESEX, HA5 3EH



**PRICE....£420,000....LEASEHOLD**

This bright and well presented three double bedroom duplex apartment (1206 sq. ft/112 sq. m), has been modernised throughout to a high standard by the current vendors. It is ideally located in the heart of Pinner Town Centre offering a large selection of shops, restaurants, cafés and supermarkets (including Marks & Spencer Food Hall, Sainsbury's, and Lidl). Pinner Memorial Park and the Metropolitan Line Tube Station are within five minutes' walk. The spacious accommodation includes an 18ft reception room with a bay fronted leaded window and wood flooring, a modern fitted kitchen, three double bedrooms and a bathroom with a separate WC. The property benefits from a private roof terrace, a long lease of 108 years unexpired and low outgoings.

**020 8866 0222**







### **COUNCIL TAX**

London Borough of Harrow - Band D - £2,395.86

### **LEASE**

Lease - 108 years unexpired

### **BIULDING INSURANCE**

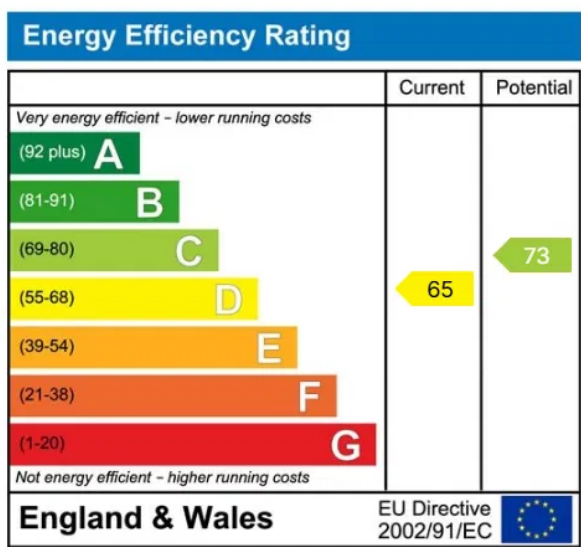
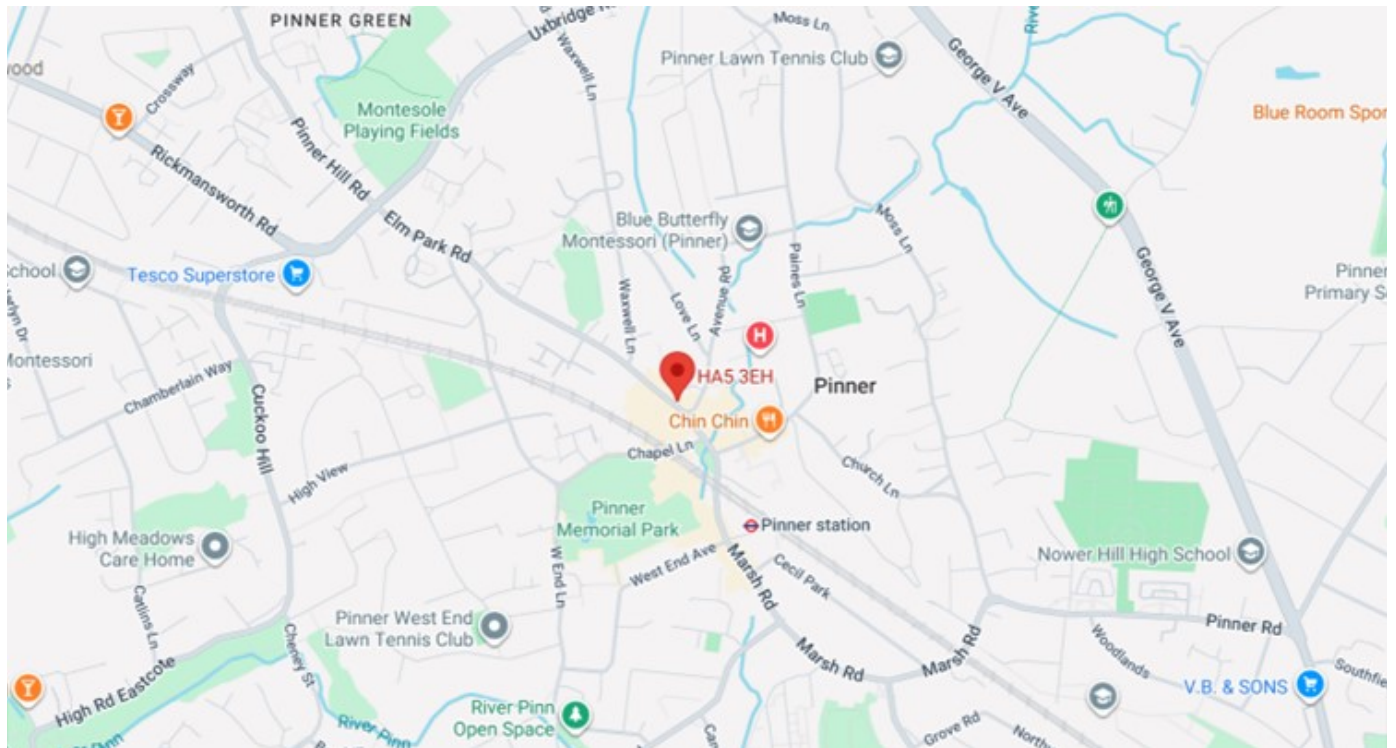
Approximately £350 pa

### **LOCAL SCHOOLS**

West Lodge Primary School - 0.27 Miles  
St John Fisher Catholic Primary School - 0.64 Miles  
Nower Hill High School - 0.82 Miles  
Pinner High School - 1.09 Miles

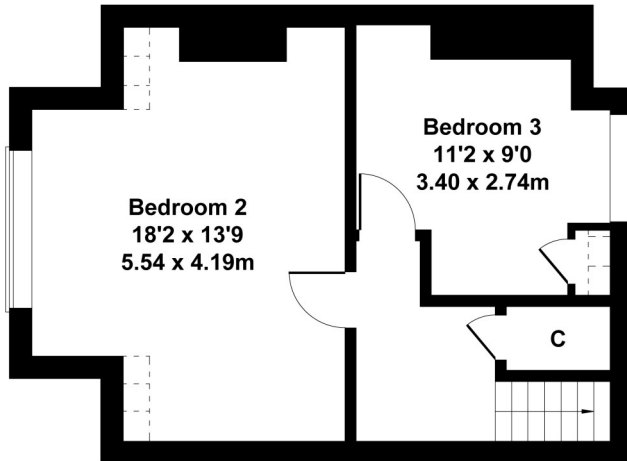
### **LOCAL TRANSPORT**

Pinner Station (Metropolitan Line) - 0.2 Miles

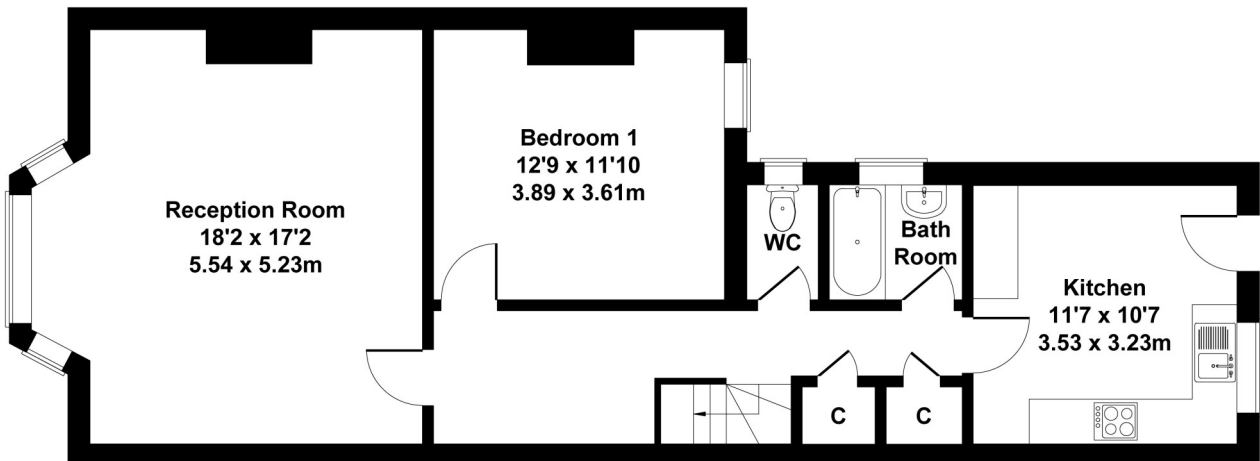


# Bridge Street

Approximate Gross Internal Area  
1206 sq ft - 112 sq m



FIRST FLOOR



GROUND FLOOR

Not to Scale. Produced by The Plan Portal 2026  
For Illustrative Purposes Only.

***For appointments to view please call David Charles 020 8866 0222***

*All measurements are taken manually and whilst every care is taken with their accuracy they must be considered approximate and should not be relied upon when purchasing carpets or furniture. No responsibility is taken for any error, omission or misunderstanding in these particulars which do not constitute an offer or contract. Services and appliances have not been tested and therefore no warranty is offered on their operational condition.*