



## Sellincourt Road, SW17

### £475,000

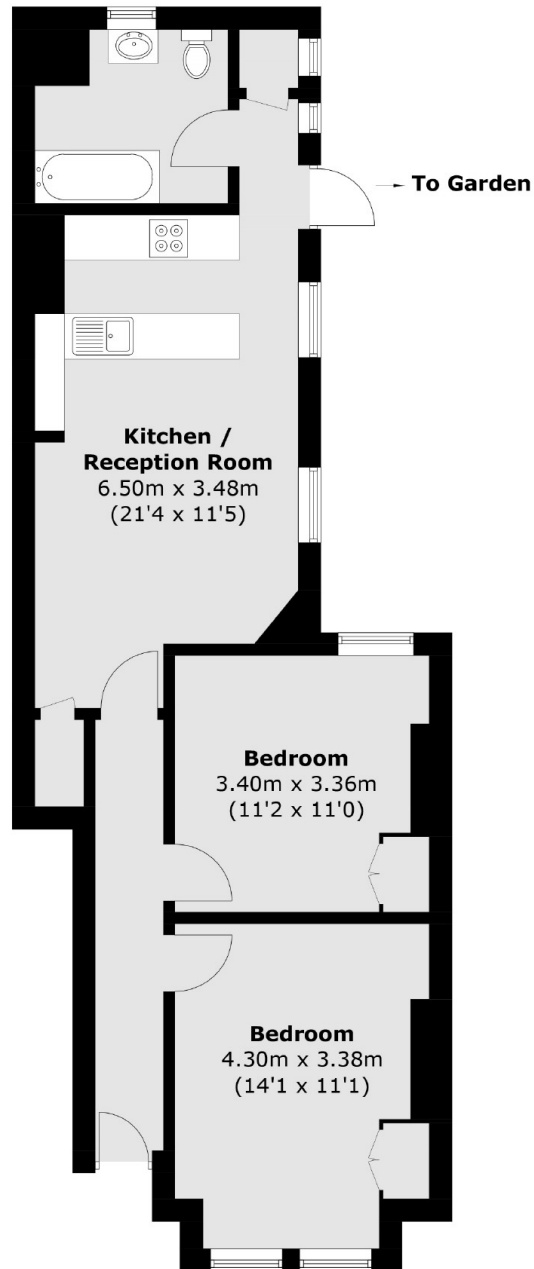
A stunning example of a beautiful ground floor maisonette in the heart of Tooting with an immaculate interior benefitting from an open plan kitchen/reception room, two spacious double bedrooms, a stylish three piece bathroom and a private landscaped garden. The property also benefits from a long lease.

Sellincourt Road is positioned enviably off the vibrant Tooting High Street, with its wide array of bars and restaurants. Tooting Broadway tube station and Tooting overground are only a short distance away.

### Features

- Two Double Bedrooms
- Private Garden
- Own Front Door
- Newly Extended Lease
- Open-Plan Kitchen/Reception Room
- Stylish Interior

# Sellincourt Road, London, SW17



Total area (approx.): 63.2 sq. m (680.3 sq. ft)