



TMS

ESTATE AGENTS



The Slug Pit, High Street, Eastry, Sandwich, Kent, CT13 0HF

£895 Per Month



- AVAILABLE FEBRUARY 2026
- TWO DOUBLE BEDROOMS
- MODERN BATHROOM
- INTEGRATED APPLIANCES
- SORRY NO PETS

- LONG TERM LET
- LOG BURNER
- COUNCIL TAX BAND - A / EPC - D
- CENTRAL VILLAGE LOCATION
- PROFESSIONAL TENANTS



AVAILABLE FEBRUARY 2026 ~ STUNNING 2 BEDROOM APARTMENT ~ HEART OF THE VILLAGE.

TMS are delighted to offer this STUNNING TWO BEDROOM apartment located in the heart of Eastry in Sandwich.

This property enjoys open plan living with dividing bifold doors between the living room and kitchen/diner offering a wealth of charm and character, including exposed brick fire place with a solid fuel burner and stripped wood floors. There are two double bedrooms and a bathroom with shower over the bath.

Close to transport links, local shops and the village pub. Eastry is a civil parish in Kent, England, around 2.5 miles southwest of Sandwich. Sandwich Bay is close by and home to nature reserves.

The property is offered part furnished with table and chairs and coffee table and would best suit a professional tenant. Unfortunately pets are not allowed under the terms of the lease and smoking is strictly prohibited.

The deposit is 5 weeks rent £1032.65/ Holding deposit £206.53. The council tax is A / EPC - D For broadband and phone coverage, please check on www.ofcom.org.uk

APPLICANTS WILL BE REQUIRED TO SHOW A MINIMUM TOTAL INCOME OF £26,850 PER ANNUM TO SHOW AFFORDABILITY FOR THIS PROPERTY AND GUARANTORS WILL BE REQUIRED TO SHOW A MINIMUM TOTAL INCOME OF £32,220.

Available Immediately, Call TMS ESTATE AGENTS today to book your accompanied viewing.

ENTRANCE HALL 24'4" x 5'10" (7.42 x 1.79)
Via gated entrance and private entrance door

MAIN BEDROOM 12'7" x 12'0" (3.84 x 3.66)
Double glazed windows with Colonial shutters, fitted carpet, radiator.

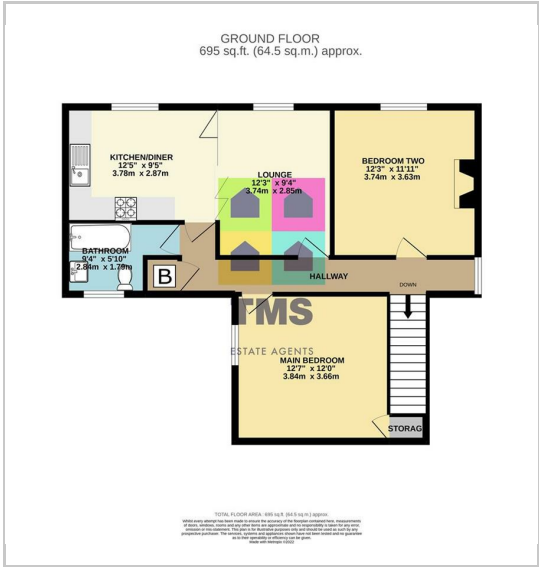
BEDROOM 2 12'3" x 11'10" (3.74 x 3.63)
Double glazed windows with Colonial shutters, stripped wood floor, exposed brick fire place and log burner.

LOUNGE 12'3" x 9'4" (3.74 x 2.85)
Double glazed windows with colonial shutters, stripped wood flooring, bifold wooden doors to Kitchen diner

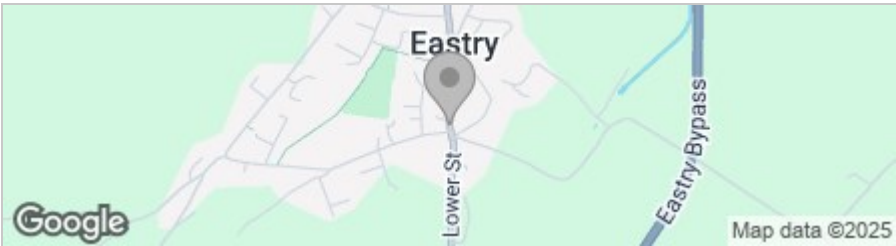
KITCHEN / DINER 12'4" x 9'4" (3.78 x 2.87)
Double glazed window with Colonial shutters, range of modern wall drawer and base units with integrated appliances including washing machine, dishwasher and electric oven and hob.

BATHROOM 9'3" x 5'10" (2.84 x 1.79)
Double glazed window, modern white bathroom suite with shower over the bath with shower screen, radiator.

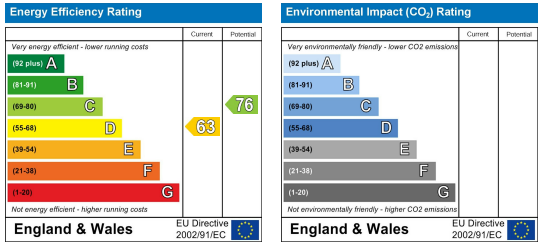
Floor Plans



Area Map



Energy Efficiency Graph



These particulars, whilst believed to be accurate are set out as a general outline only for guidance and do not constitute any part of an offer or contract. Intending purchasers should not rely on them as statements of representation of fact, but must satisfy themselves by inspection or otherwise as to their accuracy. No person in this firms employment has the authority to make or give any representation or warranty in respect of the property.