



Guide Price
£70,000

Leasehold

1x  1x  1x 

**Harfield Court, Lyon
Street, Bognor Regis,
West Sussex PO21**

OVER 60?

Secure this property
for up to **59% less!**

cubitt & west
Helping you move forwards



Main features

- Age restricted (60 years and above)
- Residents' parking space
- Close to the town centre amenities
- A short distance from the sea front
- Mainline railway station and bus links a short distance



Accommodation

GROUND FLOOR

Hall

Lounge: 14'3 at widest point x 10'4 at widest point (4.35m x 3.15m)

Kitchen: 8'7 x 6'4 (2.62m x 1.93m)

Bedroom: 13'5 x 9'8 (4.09m x 2.95m)

Shower Room

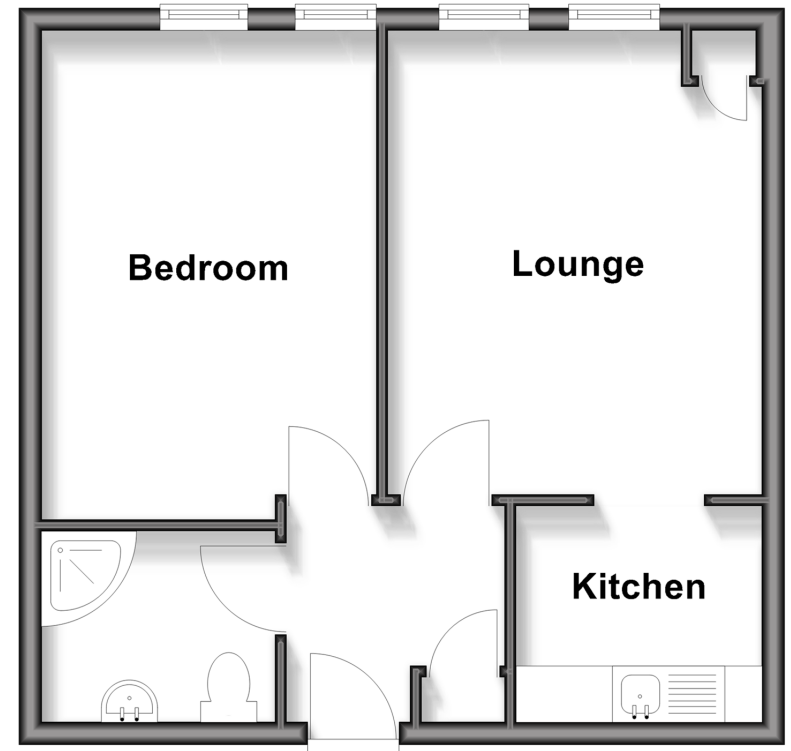
OUTSIDE

Residents' Parking



Ground Floor

Approx. 39.4 sq. metres (424.2 sq. feet)



Call Bognor - 01243 867632 ■ cubittandwest.co.uk

- Legal advice should be taken to verify fixtures/fittings, planning, alterations and/or lease details
- Appliances & services are untested, dimensions are approximate and floor plans are not to scale
- Through a Homewise Home For Life Plan people aged 60+ can secure this property for up to 59% less, by purchasing a Lifetime Lease



28469600/20260112/IH/