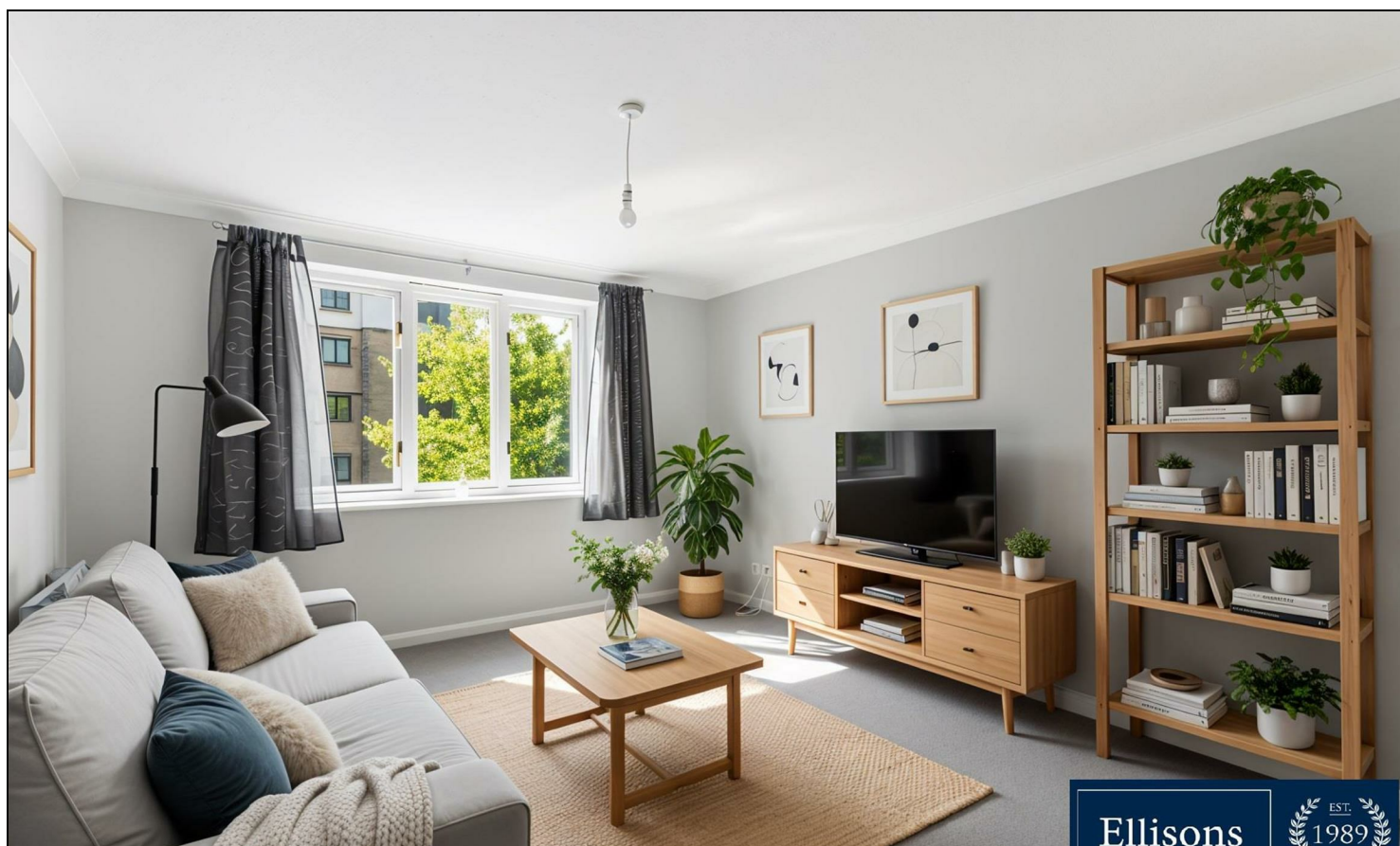


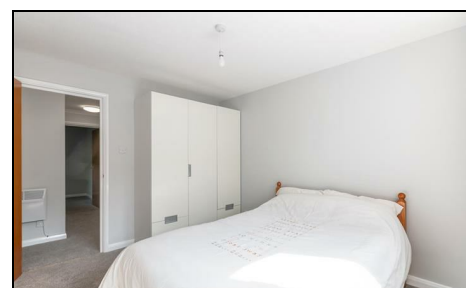
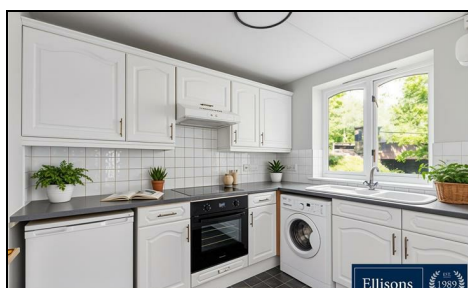
## Rothsay Avenue Wimbledon Chase, SW20 8JU

**£340,000 Leasehold**



Ellisons

EST.  
1989

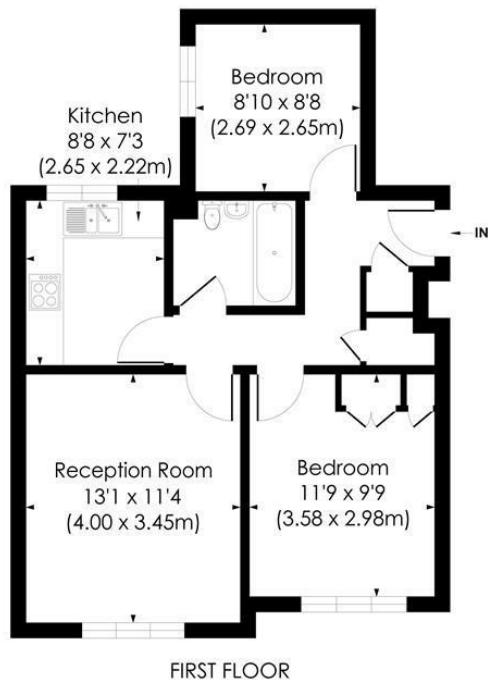


**This is a well presented and competitively priced 545 sqft, TWO DOUBLE BEDROOM, first floor apartment that is positioned within a gated development moments from Wimbledon Chase Station (Zone 3), local Shops and Amenities. Its ideal for first or second time buyers, there is an allocated parking space, block entryphone system, communal grounds, a good sized reception room, hallway with storage, neutrally decorated kitchen and bathroom and No Onward Chain. The service charge is £197 per month (£2,354 per year).**

ROTHESAY AVENUE, SW20

Approx. Gross Internal Floor Area

545 Sq. ft/50.63 Sq. m



© Pixangle Property Marketing Ltd. info@pixangle.com Tel: 0208 870 2118

pixangle  
PROPERTY MARKETING

This floor plan has been prepared for the purpose of illustration only in accordance with the latest RICS code of measuring practice and is not to scale. All measurements and areas are approximate and whilst every effort has been made to ensure the accuracy of the plan contained here, no responsibility is taken for any error, omission or misstatement.

- Two Double Bedroom
- First Floor Modern Development
- Gated Development With Allocated Parking Space
- Neutrally Decorated Kitchen And Bathroom
- Communal Gardens
- Ideal First/Second Time Purchase
- Moments From Wimbledon Chase Station
- No Onward Chain
- EPC - C
- Council Tax Band - D



Energy Efficiency Rating		
	Current	Potential
Very energy efficient - lower running costs		
(92 plus) <b>A</b>		
(81-91) <b>B</b>		
(69-80) <b>C</b>		
(55-68) <b>D</b>		
(39-54) <b>E</b>		
(21-38) <b>F</b>		
(1-20) <b>G</b>		
Not energy efficient - higher running costs		
EU Directive 2002/91/EC		
England & Wales		

For Free Mortgage Quote and Best Mortgage Rates, call Ellisons Mortgage Advisor on 0208 944 9595



Although these particulars are believed to be correct, their accuracy is not guaranteed and they do not form part of any contract.

**Celebrating 30 years  
of successful Sales and  
Lettings in Merton**

