



Connells

Burway Close
Lichfield



Property Description

This well-presented two-bedroom upper floor apartment offers comfortable and convenient living just a short distance from the city centre. Ideal for professionals, couples, or small families, the property combines a practical layout with modern finishes throughout.

The apartment features a bright and spacious living area, perfect for relaxing or entertaining, alongside a well-equipped kitchen with ample storage and workspace. Both bedrooms are generously sized, providing flexibility for sleeping arrangements, a home office, or guest accommodation. A clean and contemporary bathroom completes the interior.

Further benefits include allocated parking, ensuring ease of access, as well as the advantage of being situated close to local amenities, transport links, and the vibrant city centre.

Early viewing is highly recommended to fully appreciate what this property has to offer.



Communal Intercom Entrance

Reception Hall

Open Plan Lounge/Kitchen

20' 3" x 10' 5" (6.17m x 3.17m)

Bedroom One

9' 9" x 9' 5" (2.97m x 2.87m)

Bedroom Two

13' x 7' 2" (3.96m x 2.18m)

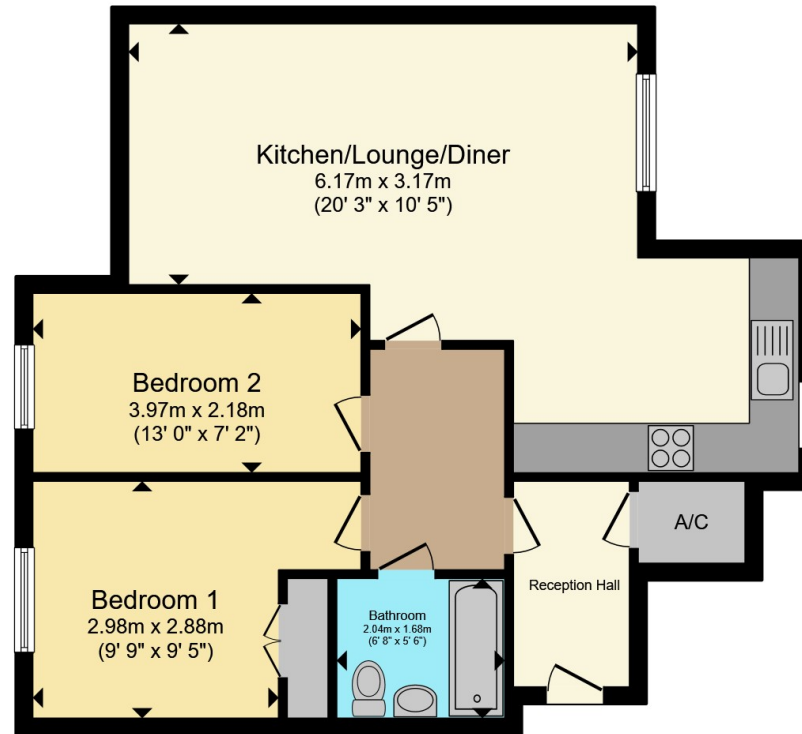
Bathroom

Allocated Parking









Total floor area 63.8 m² (686 sq.ft.) approx

This floor plan is for illustrative purposes only. It is not drawn to scale. Any measurements, floor areas (including any total floor area), openings and orientation are approximate. No details are guaranteed, they cannot be relied upon for any purpose and they do not form part of any agreement. No liability is taken for any error, omission or misstatement. A party must rely upon its own inspection(s). Powered by www.propertybox.io



To view this property please contact Connells on

T 01543 262 376
E lichfield@connells.co.uk

11-13 Bore Street
 LICHFIELD WS13 6LZ

EPC Rating: C

Council Tax
 Band: B

Service Charge:
 1167.72

Ground Rent:
 125.00

Tenure: Leasehold

view this property online connells.co.uk/Property/LFD311738

This is a Leasehold property with details as follows; Term of Lease 125 years from 01 Jan 2005. Should you require further information please contact the branch. Please Note additional fees could be incurred for items such as

1. MONEY LAUNDERING REGULATIONS Intending purchasers will be asked to produce identification documentation at a later stage and we would ask for your co-operation in order that there will be no delay in agreeing the sale. 2. These particulars do not constitute part or all of an offer or contract. 3. The measurements indicated are supplied for guidance only and as such must be considered incorrect. Potential buyers are advised to recheck measurements before committing to any expense. 4. We have not tested any apparatus, equipment, fixtures, fittings or services and it is in the buyers interest to check the working condition of any appliances.

Connells Residential is registered in England and Wales under company number 1489613, Registered Office is Cumbria House, 16-20 Hockliffe Street, Leighton Buzzard, Bedfordshire, LU7 1GN. VAT Registration Number is 500 2481 05.



See all our properties at www.connells.co.uk | www.rightmove.co.uk | www.zoopla.co.uk

Property Ref: LFD311738 - 0002