



Broad Street, Newport Pagnell, MK16 0AN

welcome to

Broad Street, Newport Pagnell

Situated in the heart of Newport Pagnell, this well-presented. THREE-bedroom, MID-TERRACE home is located on the ever-popular Broad Street, offering convenient access to local amenities, schools, and transport links.

Entrance Hall

Double-glazed door to the front, stairs to the first floor and door to the dining area.

Lounge/Diner

Double-glazed bay window to the front, feature fireplace, TV point and 2 radiators. Double-glazed window to the rear and door to the kitchen.

Kitchen

Fitted with a mix of wall and base units with work surface over, 1.5 bowl sink with mixer tap and drainer, eye-level electric oven and gas hob with extractor fan over. Integrated dishwasher and fridge/freezer. Under stairs storage cupboard and double-glazed window to the side.

Cloakroom

Partially tiled with a wash hand basin with mixer tap set in a vanity unit and a low-level WC with integrated flush.

Sunroom

Radiator and double-glazed double doors leading out to the garden.

Utility Room

Built of brick and Upvc construction with double-glazed windows to the side and rear, space for a washing machine and door to the front.

First Floor Landing

Stairs from the ground floor and stairs to the second floor. Doors to bedrooms two and three plus the family bathroom.

Bedroom Two

Fitted wardrobes with hanging space and storage, radiator and double-glazed window to the front.

Bedroom Three

Radiator and double-glazed window to the rear.

Bathroom

Partially tiled with a wash hand basin with mixer tap set in a vanity unit, low-level WC with integrated flush and a bath with a shower over. Heated towel rail, radiator and double-glazed window to the rear.

Second Floor Landing

Stairs from the first floor and door to the bedroom.

Bedroom One

Radiator and double-glazed window to the rear. Door to the en-suite.

En-Suite

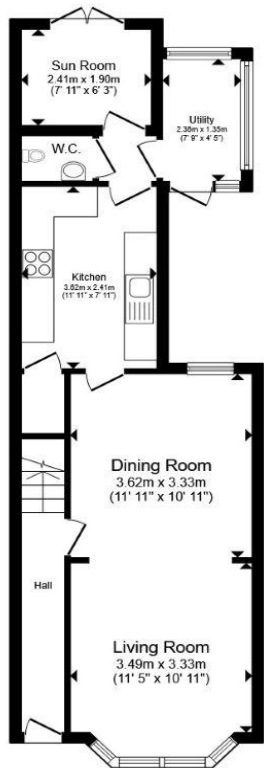
Partially tiled with a wash hand basin, low-level WC and a shower cubicle. Heated towel rail and double-glazed velux style window to the front.

Outside Front Garden

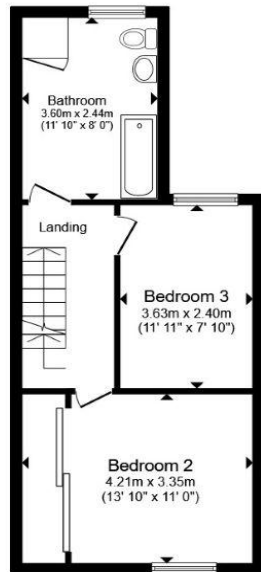
Enclosed by a small brick wall the garden is laid with bark and steps leading to the front door.

Rear Garden

Enclosed by panel fencing the garden is half laid with gravel and half laid with bark, some shrubs and a shed.



Ground Floor



First Floor



Second Floor

Total floor area 113.5 m² (1,222 sq.ft.) approx

This floor plan is for illustrative purposes only. It is not drawn to scale. Any measurements, floor areas (including any total floor area), openings and orientation are approximate. No details are guaranteed, they cannot be relied upon for any purpose and they do not form part of any agreement. No liability is taken for any error, omission or misstatement. A party must rely upon its own inspection(s). Powered by www.propertybox.io



welcome to
Broad Street,
Newport Pagnell

- THREE-BEDROOM MID-TERRACE
- SPACIOUS LIVING ACCOMMODATION
- WELL-PROPORTIONED BEDROOMS
- CLOSE TO THE TOWN CENTRE
- GOOD SCHOOL CATCHMENTS

Tenure: Freehold EPC Rating: Awaited
Council Tax Band: B

£375,000



view this property online [brownandmerry.co.uk/Property/NPL107981](https://www.brownandmerry.co.uk/Property/NPL107981)



Property Ref:
NPL107981 - 0004

1. MONEY LAUNDERING REGULATIONS Intending purchasers will be asked to produce identification documentation at a later stage and we would ask for your co-operation in order that there is no delay in agreeing the sale. 2. These particulars do not constitute part or all of an offer or contract. 3. The measurements indicated are supplied for guidance only and as such must be considered incorrect. Potential buyers are advised to recheck measurements before committing to any expense. 4. We have not tested any apparatus, equipment, fixtures or services and it is in the buyers interest to check the working condition of any appliances. 5. Where an EPC, or a Home Report (Scotland only) is held for this property, it is available for inspection at the branch by appointment. If you require a printed version of a Home Report, you will need to pay a reasonable production charge reflecting printing and other costs. 6. We are not able to offer an opinion either written or verbal on the content of these reports and this must be obtained from your legal representative. 7. Whilst we take care in preparing these reports, a buyer should ensure that his/her legal representative confirms as soon as possible all matters relating to title including the extent and boundaries of the property and other important matters before exchange of contracts.

Brown & Merry is a trading name of Sequence (UK) Limited which is registered in England and Wales under company number 4268443, Registered Office is Cumbria House, 16-20 Hockliffe Street, Leighton Buzzard, Bedfordshire, LU7 1GN. VAT Registration Number is 500 2481 05.


brown & merry



01908 611242



newportpagnell@brownandmerry.co.uk



74A High Street, Newport Pagnell, MILTON
KEYNES, Buckinghamshire, MK16 8AQ



[brownandmerry.co.uk](https://www.brownandmerry.co.uk)