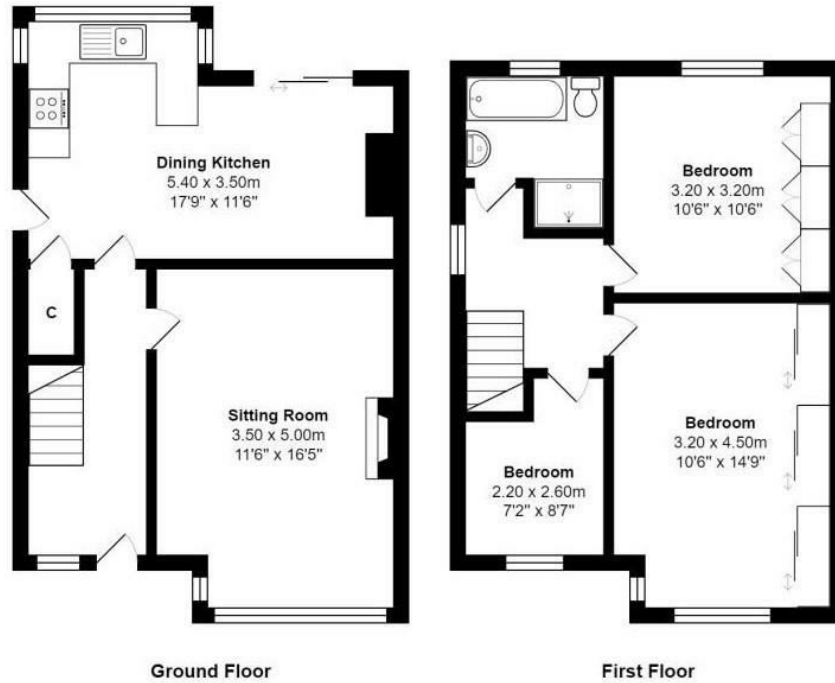




## 37 Braithwaite Edge Road, Keighley, BD22 6RA

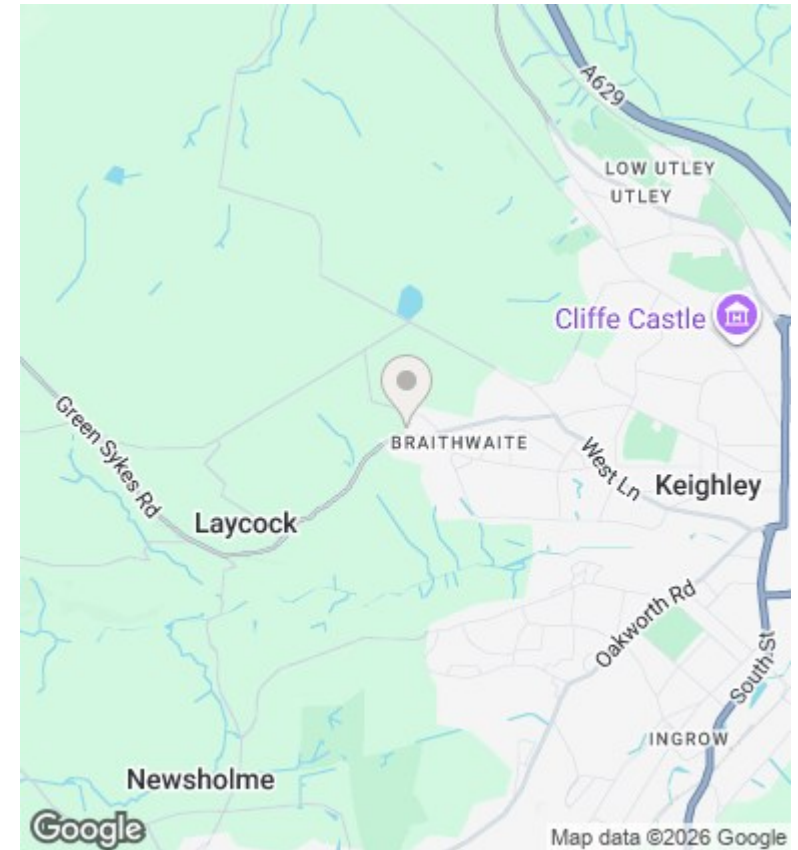
Asking Price £249,950

- SPACIOUS SEMI-DETACHED PROPERTY
- GARAGE & SEPARATE USEFUL WORKSHOP
- CONTEMPORARY HOUSE BATHROOM
- LONG-DISTANCE COUNTRYSIDE VIEWS
- THREE BEDROOMS
- EXTENSIVE SOUTH-FACING GARDEN
- RECENTLY UPGRADED BY THE CURRENT OWNER
- PRIVATE DRIVEWAY
- SUPERB DINING KITCHEN
- IDEAL FAMILY HOME



Total Area: 79.7 m<sup>2</sup> ... 858 ft<sup>2</sup>

All measurements are approximate and for display purposes only



## Directions

## Viewings

Viewings by arrangement only. Call 01535 655212 to make an appointment.

## Council Tax Band

C

## EPC Rating:

C

Energy Efficiency Rating		Current	Potential
<i>Very energy efficient - lower running costs</i>			
(92 plus)	A		
(81-91)	B		85
(69-80)	C	72	
(55-68)	D		
(39-54)	E		
(21-38)	F		
(1-20)	G		
<i>Not energy efficient - higher running costs</i>			
<b>England &amp; Wales</b>		EU Directive 2002/91/EC	