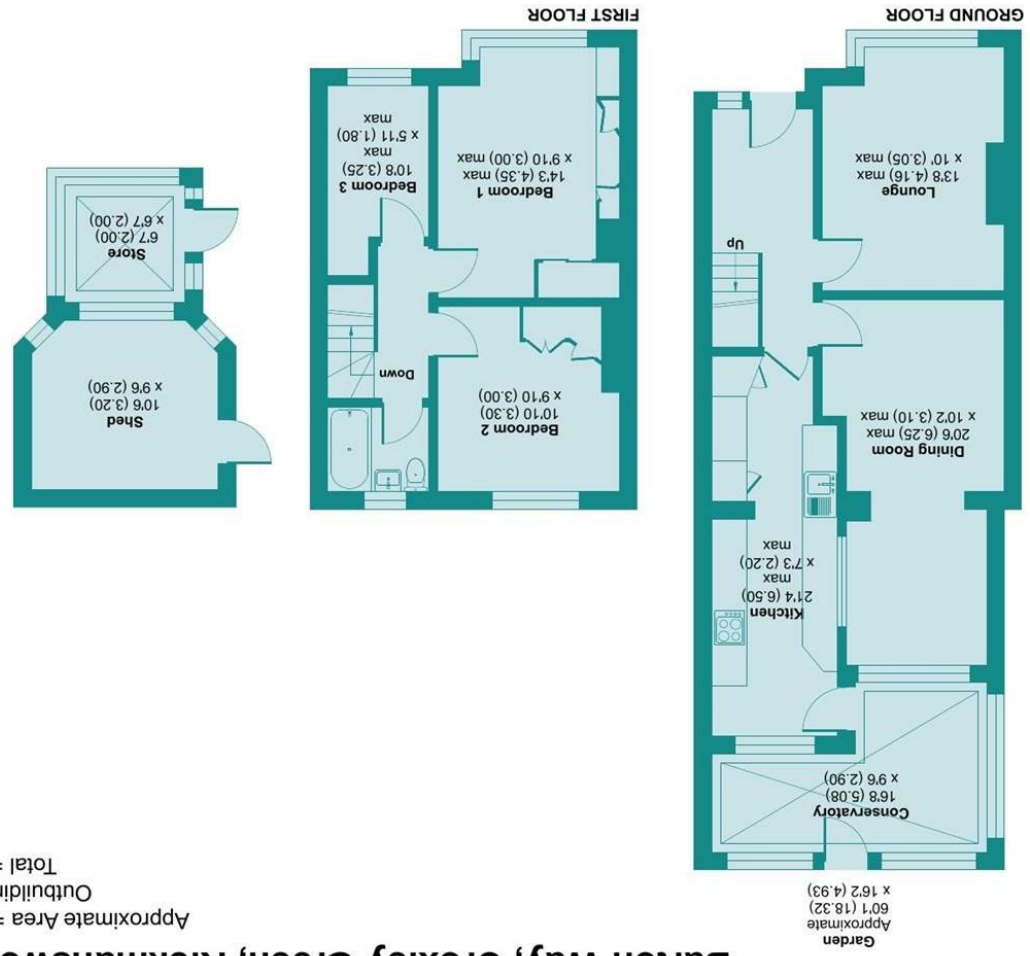


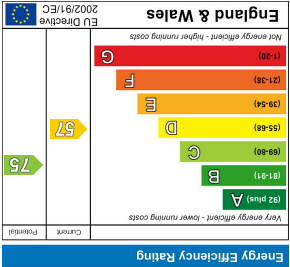
Floor plan produced in accordance with RICS Property Measurement 2nd Edition, incorporating International Property Measurement Standards (IPMS2 Residential). © nchcom 2026.



Approximate Area = 1083 sq ft / 100.6 sq m
Outbuildings = 140 sq ft / 13 sq m
Total = 1223 sq ft / 113.6 sq m
For identification only - Not to scale

Barton Way, Croxley Green, Rickmansworth, WD3 3QA

- LOCAL AUTHORITY: Three Rivers District Council
- TENURE: Freehold
- COUNCIL TAX BAND: D
- VIEWS: By prior appointment only



Agents Note: Whilst every care has been taken to prepare these particulars, they are for guidance purposes only. All measurements are approximate and are for general guidance purposes only and whilst every care has been taken to ensure their accuracy, they should not be relied upon and potential buyers/tenants are advised to recheck the measurements



GUIDE PRICE
£550,000
BARTON WAY
CROXLEY GREEN, RICKMANSWORTH, WD3 3QA

PROPERTY SUMMARY

NO UPPER CHAIN. A classic three bed extended Croxley mid terrace house in popular Barton Way which offers extended living space and bags of potential to upgrade and refurbish. The front door opens into a spacious hallway with stairs to first floor and door into an extended kitchen/utility space. A good size front reception is complimented by the extended dining room to the rear which has the potential to create open plan kitchen/family room. A lean-to garden room opens onto the good size rear garden backing onto the recreation grounds. The first floor has a bathroom and three bedrooms all off landing. It also benefits from off street parking for car, gas central heating and easy access to the great local schools, shops and Met Line Station. Offered at a competitive market price, with bags of potential, no upper chain and an opportunity to create your dream home.

3



1



1

