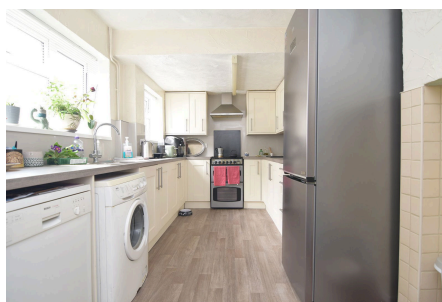


48 King John Avenue, King's Lynn PE30 4QA

£254,000

 3  2  3



Tucked away in one of King's Lynn's most sought after areas, this extended three-bedroom semi-detached home blends modern living with everyday convenience – all just moments from the heart of Gaywood. Whether it's schools, local shops, cafes, takeaways or everyday essentials, everything you need is quite literally on your doorstep.

Key Features

- Semi-Detached House
- Three Reception Rooms
- Private Rear Garden
- Two Bathrooms
- Modern Kitchen
- Three Bedrooms
- Sought After Location - Close to Local Schools and Shops
- Gas Central Heating
- Garage and Off-road Parking
- Potential Fourth Bedroom

