



andrew nunn  
ASSOCIATES

HEMELCROSS HOUSE

£295,000  
Hemecross House  
London, W4 1YB



## PROPERTY SUMMARY

A bright, south west-facing one-bedroom apartment, approx. 485 Sq ft / 45.1 Sq M, situated on the top floor of Homecross House, a popular retirement community in the heart of Chiswick.

Comprising an entrance hallway, a large storage/meter cupboard, a double bedroom with built-in wardrobe storage, a spacious shower room and a living/dining room with a separate kitchen.

Located 100m from Chiswick High Road, with its many major retailers, independent shops and recreational amenities, as well as numerous transport options and green spaces.

Homecross House was built in 1985 for over 60's and comprises 110 flats. The residents benefit from an on-site manager, remote support via a care line, residents' lounge, laundry, well-maintained communal gardens and guest facilities. The whole development is wheelchair friendly and there are frequent optional, organised activities.

1



1

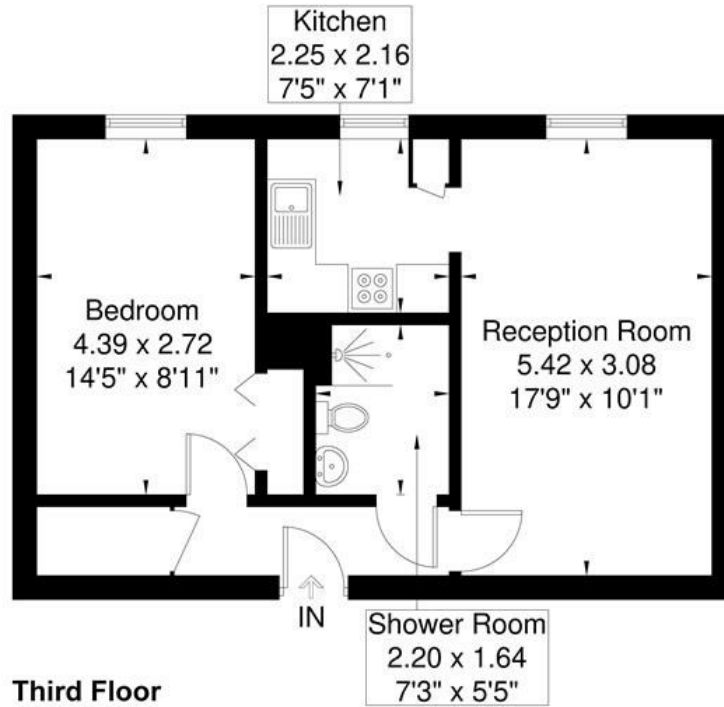


1





**Homecross House**  
Approximate Gross Internal Area = 45.1 sq m / 485 sq ft



Although every attempt has been made to ensure accuracy, all measurements are approximate.  
The floorplan is for illustrative purposes only and not to scale.  
© www.perspective.co.uk

**LOCAL AUTHORITY**

Hounslow

**TENURE**

Leasehold

**COUNCIL TAX BAND**

D

**VIEWINGS**

By prior appointment only

Energy Efficiency Rating		Current	Potential
<i>Very energy efficient - lower running costs</i>			
(92 plus) <b>A</b>			
(81-91) <b>B</b>			
(69-80) <b>C</b>		77	81
(55-68) <b>D</b>			
(39-54) <b>E</b>			
(21-38) <b>F</b>			
(1-20) <b>G</b>			
<i>Not energy efficient - higher running costs</i>			
<b>England &amp; Wales</b>		EU Directive 2002/91/EC	

Agents Note: Whilst every care has been taken to prepare these particulars, they are for guidance purposes only. All measurements are approximate and are for general guidance purposes only and whilst every care has been taken to ensure their accuracy, they should not be relied upon and potential buyers/tenants are advised to recheck the measurements



**OFFICE ADDRESS**

The Clock House  
66 South Parade  
Chiswick  
London  
W4 5LG

**OFFICE DETAILS**

020 8995 1500  
sales@andrewnunnassociates.co.uk  
andrewnunnassociates.co.uk