



Jordan fishwick

Apartment 24 Synergy 2, 427 Ashton Old
£1,050 Per Month



Ashton Old Road Manchester M11 2DL

£1,050 Per Month



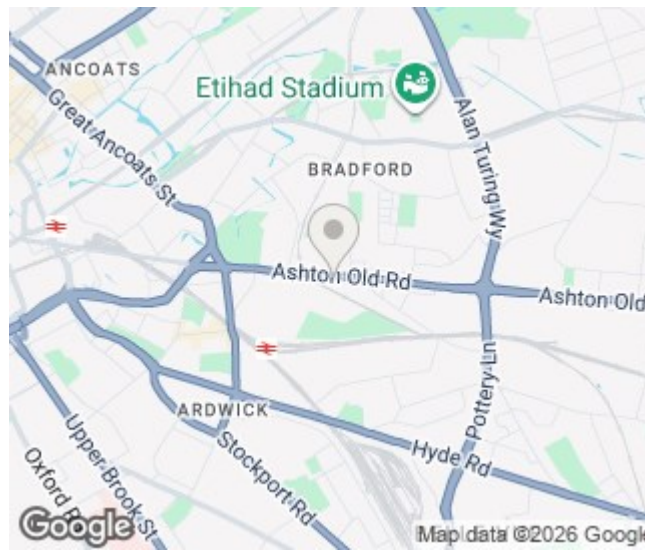
The Property

Available Now. Jordan Fishwick are pleased to offer this 4th Floor larger than average TWO BEDROOM apartment located just a short stroll away from Manchester City Centre at Synergy 2. The property consists of a large living room/kitchen/diner, a large master bedroom which benefits from an en-suite & a Second bedroom which fits a double bed. Secure off road parking. Fully Furnished with white goods. Tax Band B. EPC Rating B. No Pets allowed.

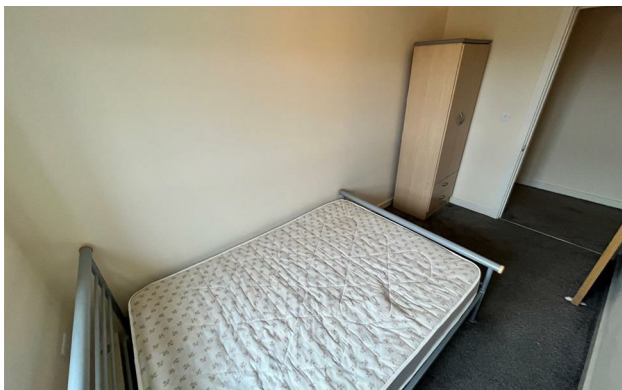
VIDEO/ PHOTO OFFERS NOT ACCEPTED - PLEASE DO CONTACT TO BOOK A VIEIWNG



- Available Now
- 4th Floor Apartment
- Two Bedroom Apartment
- Furnished
- Tax Band B
- EPC rating
- Close to Sport City
- Parking included
- Close to City Centre



Energy Efficiency Rating		
	Current	Potential
Very energy efficient - lower running costs		
(92 plus) A		
(81-91) B	81	81
(69-80) C		
(55-68) D		
(39-54) E		
(21-38) F		
(1-20) G		
Not energy efficient - higher running costs		
England & Wales	EU Directive 2002/91/EC	





These particulars are believed to be accurate but they are not guaranteed and do not form a contract. Neither Jordan Fishwick nor the vendor or lessor accept any responsibility in respect of these particulars, which are not intended to be statements or representations of fact and any intending purchaser or lessee must satisfy himself by inspection or otherwise as to the correctness of each of the statements contained in these particulars. Any floorplans on this brochure are for illustrative purposes only and are not necessarily to scale.

Offices at: Offices at Chorlton, Didsbury, Disley, Hale, Glossop, Macclesfield, Manchester Deansgate, Manchester Whitworth Street, New Mills, Sale, Wilmslow and Withington