



Sutherland Beck, Didcot, Oxfordshire, OX11 7FF



## Sutherland Beck, Didcot

A well presented two bedroom mid terrace property situated on the no through location of Sutherland Beck, Didcot. The property comes to the market chain free.

Coming into the property we have space for coats and the useful ground floor cloakroom. The bright and airy lounge with fireplace and generous understairs storage cupboard. The kitchen/diner has been upgraded by the current vendor with the kitchen having ample storage and space for white goods. There is additional storage in the dining area and space for a small table and chairs and a the door leading out into the garden.

The first floor offers two double bedrooms and the modern family bathroom with shower over the bath.

The garden to the rear of the property is mainly laid to lawn with a patio area perfect for entertaining. There are two allocated parking spaces to the front of the property.

Situated on the Ladygrove development and within easy walking distance of the local amenities, the town centre and Didcot Train Station. There development benefits from the Ladygrove Pub, Co-Op and takeaway and Oak Tree Dr's surgery. There are excellent links to the A34 and in turn the M4 and M40



- Coming to market chain free
- Comfortable lounge with feature fireplace and useful storage cupboard
- Kitchen/diner has been upgraded by current vendors and has ample storage and space for white goods. There is space for a small table and a door leading into the garden
- Garden is mainly laid to lawn with a patio area, perfect for entertaining
- Two allocated parking spaces to the front of the property

2		bedrooms	Council Tax Band:	C
1		receptions	Tenure:	Freehold
1		bathrooms	EPC Rating:	C



Bright and airy lounge with  
fireplace and generous  
under-stairs storage cupboard



The first floor offers two double bedrooms and the modern family bathroom with shower over the bath







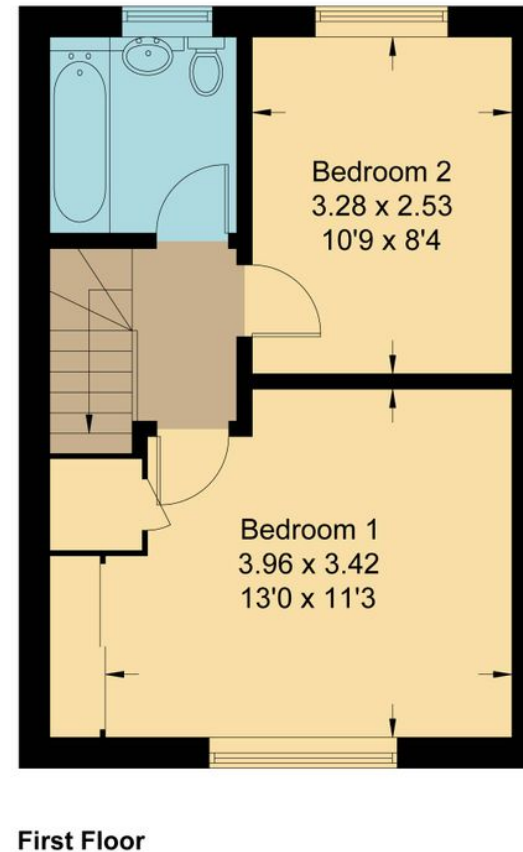
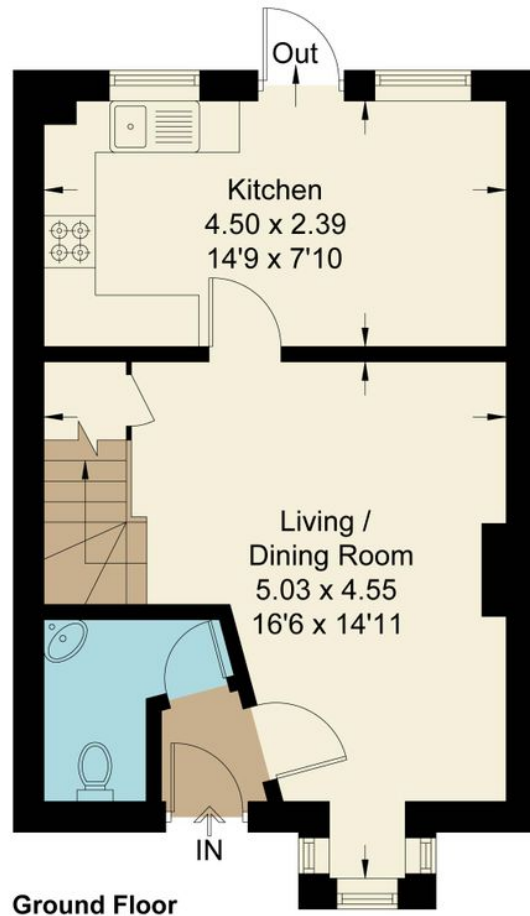
The garden to the rear of the property is mainly laid to lawn with a patio area perfect for entertaining



# Sutherland Beck, OX11

Approximate Gross Internal Area = 61.90 sq m / 989 sq ft

For identification only - Not to scale



Not to scale, for illustration and layout purposes only.  
© Mortimer Photography. Produced for Hodsons.  
Unauthorised reproduction prohibited