



Thompson Way, Streethay
Lichfield, WS13 8GD

Offers in the Region Of £477,500

A beautifully presented four bedroom detached family home, situated on Thompson Way on an extremely desirable estate in Streethay, Lichfield. This fantastic corner plot has come to market within close reach of Lichfield Trent Valley Train Station, with connections to Birmingham and London. Ideal for any families searching in the area, this opportunity is not to be missed.

Approached via beautiful kerb appeal with an attractive corner position on the estate, with a driveway at the side and large external garage, the first impressions of this home are delightful.

Internally you are greeted with a bright welcoming hallway, which flows into a spacious living room. This living area is a generous size and provides ample relaxation space for the family, with dual aspect window and French Doors out to the garden.

Also off the hallway is a separate reception room with bay window, currently being used as a play room but with versatile usage as a study or dining room too, plus a guest W.C. and kitchen/diner at the rear. The kitchen/diner features attractive units with modern fitted appliances, and plenty of social space for friends and family, also with French Doors out to the garden.

Upstairs off a surprisingly spacious landing are four brilliant size bedrooms, and a family bathroom. These well-proportioned bedrooms have all been tastefully decorated to suit the family, and the main bedroom features a private en-suite shower room.

Outside is a wonderfully private rear garden, with a large social patio area and lawn, with a beautiful brick wall surrounding and side access to the driveway and garage.

Tenure: Freehold

Council Tax Band: F

Estate fee: Approx. £230.00 per annum



PAUL
CARR
Estate Agents
Sales & Lettings

Hallway
15' 0" x 6' 9" (4.56m x 2.07m)

Lounge
17' 2" x 10' 8" (5.23m x 3.25m)

Play Room/Study
13' 6" x 8' 9" (4.11m x 2.66m)

Kitchen/Diner
15' 1" x 14' 3" (4.59m x 4.34m)

Ground Floor W.C.
7' 6" x 3' 1" (2.29m x 0.93m)

Bedroom One
15' 1" x 8' 10" (4.61m x 2.69m)

En-Suite
8' 2" x 4' 1" (2.49m x 1.25m)

Bedroom Two
18' 1" x 8' 8" (5.51m x 2.65m)

Bedroom Three
10' 11" x 9' 5" (3.32m x 2.86m)

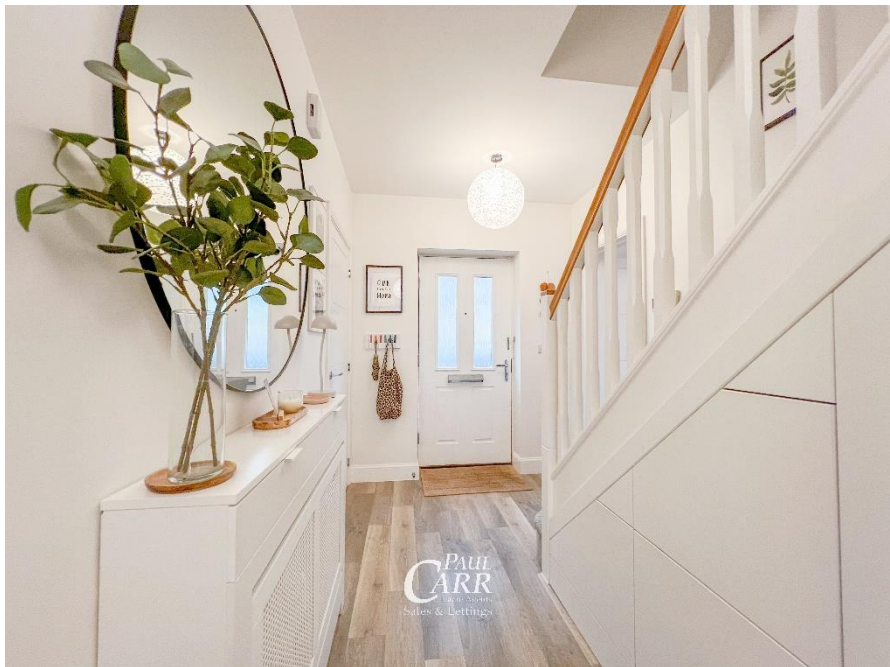
Bedroom Four
7' 8" x 7' 6" (2.34m x 2.29m)

Bathroom
8' 9" x 5' 7" (2.66m x 1.70m)

External Garage
19' 7" x 9' 11" (5.98m x 3.02m)







Floor Plan

This floor plan is not drawn to scale and is for illustration purposes only

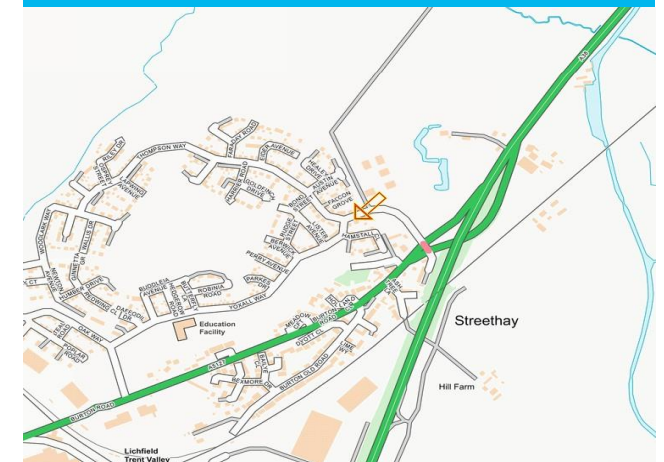


This floorplan is not drawn to scale and is for illustration purposes only
Plan produced using PlanUp.

Energy Performance Rating

Score	Energy rating	Current	Potential
92+	A		92 A
81-91	B	82 B	
69-80	C		
55-68	D		
39-54	E		
21-38	F		
1-20	G		

Map Location









Every care has been taken with the preparation of these Sales Particulars but they are for general guidance only and complete accuracy cannot be guaranteed. If there is any point which is of particular importance, professional verification should be sought. The mention of any fixtures, fittings and/or appliances does not imply they are in full efficient working order as they have not been tested. All dimensions are approximate. Photographs are reproduced for general information and it cannot be inferred that any item shown is included in the sale. These Sales Particulars do not constitute a contract or part of a contract.

Came on the market: Nov 25 Identity Verification Fee - We are required by law to conduct anti-money laundering checks on all those buying a property as part of our due diligence. As agents acting on behalf of the seller, we are required to verify the identity of all purchasers once an offer has been accepted, subject to contract. The initial checks are carried out on our behalf by Lifetime Legal . A non-refundable administration fee of £40 + VAT (£48 including VAT) applies which covers the cost of obtaining relevant data and any manual checks and monitoring which might be required. This fee will need to be paid by you in advance of us issuing a memorandum of sale, directly to Lifetime Legal, and is non-refundable.