



Offers In Excess Of

£410,000

Freehold



Offered to the market with NO ONWARD CHAIN is this bright and spacious three-bedroom semi-detached townhouse, offering approximately 1,506 sq. ft. of well-balanced accommodation. Ideally positioned in a quiet and tucked-away setting within the popular Buckingham Park development, the property benefits from a wide range of local amenities including shops, eateries, a Budgens convenience store and a beauty salon. The area also offers a combined school, community centre, and excellent transport links, with regular bus services and Aylesbury Parkway railway station nearby in Berryfields providing access to London Marylebone in under an hour.

The accommodation comprises an entrance lobby leading into a superb open-plan kitchen/dining room (23'9" x 11'5"), complemented by a utility area and guest cloakroom. The first floor offers two well-proportioned double bedrooms and a generous dual-aspect living room filled with natural light. The second floor is dedicated to an impressive principal bedroom

- NO ONWARD CHAIN
- LARGE FAMILY HOME - 1,506 SQ.FT
- SPACIOUS KITCHEN/DINING ROOM
- ENCLOSED REAR GARDEN WITH PATIO
- GAS CENTRAL HEATING
- QUIET & TUCKED AWAY LOCATION
- GARAGE & DRIVEWAY PARKING
- DOUBLE ASPECT LIVING ROOM
- MASTER BEDROOM WITH EN-SUITE
- UPVC DOUBLE GLAZING

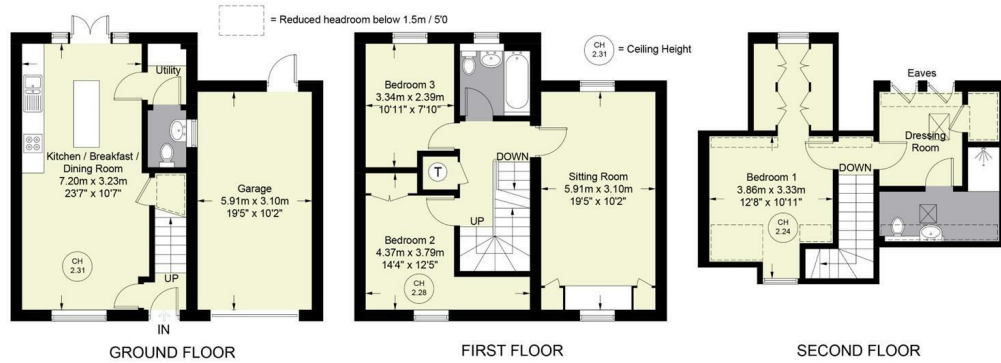


5 Petronel Road, Aylesbury, Buckinghamshire, HP19 9RG

Estate Agents ~ Lettings Agents ~ Valuers ~ Independent Mortgage Advisors

Petronel Road

Approximate Gross Internal Area
 Ground Floor = 348 sq ft / 32.3 sq m
 First Floor = 561 sq ft / 52.1 sq m
 Second Floor = 384 sq ft / 35.7 sq m
 Garage = 198 sq ft / 18.4 sq m
 Total = 1491 sq ft / 138.5 sq m



Floor Plan produced for Hursts by Media Arcade Ltd ©.
 Illustration for identification purposes only. Window and door openings are approximate. Whilst every attempt is made to assure accuracy in the preparation of this plan, please check all dimensions, shapes and compass bearings before making any decisions reliant upon them.

