



Hertford Avenue
Parkside, SW14

CHESTERTONS





A beautifully presented and extremely well appointed Semi Detached family home conveniently located on the Parkside of East Sheen close to Palewell Common and Richmond Park.

This stunning double fronted property boasts in excess of 2200 sq. ft. of modern contemporary living space which has been completely refurbished by a renowned local developer to include a formal reception room, kitchen/breakfast room, family room, study, utility/boot room and downstairs cloakroom.

On the upper floors the property offers five double bedrooms a luxury family bathroom and two further En Suite wash rooms.

In addition the property has a further attic space measuring 259 sq. ft. which has been boarded out with power and lighting and provides excellent accessible storage.

To the front of the property there is a walled and gated perimeter with a mixture of small shrubs and trees and to the rear the property boasts a wide garden mainly laid to lawn with a patio area and fenced perimeter.

Hertford Avenue is a leafy location conveniently positioned close to many local shops, cafes and restaurants along the Upper Richmond Road West. The property also benefits an unspoiled outlook to the rear of the property overlooking the allotments adjacent to Beverley Brook. Palewell Common, Richmond Park and Roehampton Golf Club are also within close proximity.

- Double Fronted
- Five Bedrooms
- Approx 2459 sq ft
- Immaculate Throughout
- Generous Garden
- No Onward Chain

Asking Price £2,750,000

Energy Efficiency Rating		Current	Potential
100-109	A		
81-100	B		
62-80	C	78	83
43-61	D		
25-42	E		
10-24	F		
1-9	G		

Not energy efficient - higher running costs

England, Scotland & Wales EU Directive 2002/91/EC

Tenure: Freehold
Service Charge: N/A
Ground Rent: N/A
Local Authority: London Borough of Richmond upon Thames
Council Tax Band: F

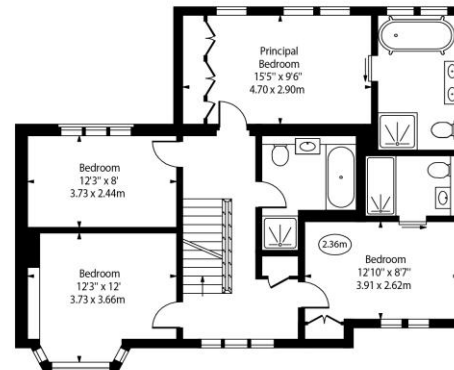
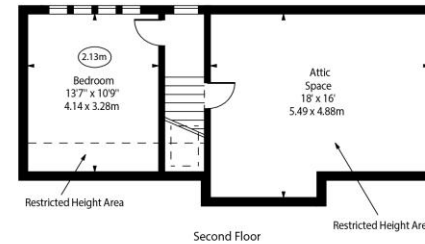
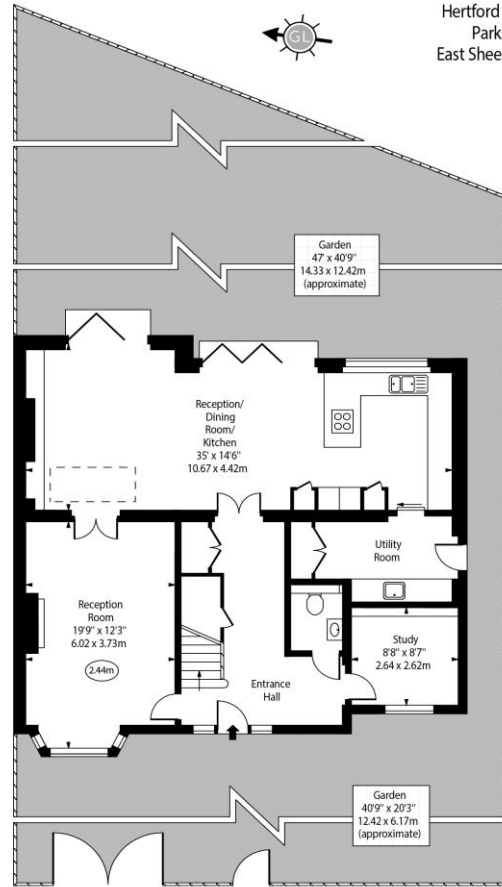
Chestertons South West Prime Sales

23a Friars Stile Road
 Richmond
 Surrey
 TW10 6NH
 swprime@chestertons.co.uk

Hertford Avenue,
Parkside,
East Sheen, SW14



○ - Ceiling Height



Approx Gross Internal Area 2184 Sq Ft - 202.89 Sq M
(Excluding Attic Space)
Approx. Floor Area Including Restricted Heights 2489 Sq Ft - 231.23 Sq M
(Including Attic Space)

Every attempt has been made to ensure the accuracy of the floor plan shown.
However, all measurements, fixtures, fittings, and data shown are approximate interpretations and for illustrative purposes only. Measured according to the RICS, Not To Scale.
www.godlens.co.uk
Ref. No. 030980E

Chesterton UK Services Limited trading as Chestertons for themselves and for the vendor of this property whose agents they are, give notice that (i) these particulars do not constitute any part of an offer or contract, (ii) all statements contained within these particulars are made without responsibility on the part of Chestertons or the vendor, (iii) whilst made in good faith, none of the statements contained within these particulars are to be relied upon as a statement or representation of fact, (iv) any intending purchasers must satisfy themselves by inspection or otherwise as to the correctness of each of the statements contained within these particulars, (v) the vendor does not make or give either Chestertons or any person in their employment any authority to make or give representation or warranty whatsoever in relation to this property. Wide angle lenses may be used. ©Copyright Chestertons | Chesterton UK Services Limited | Registered Office 5th Floor, The Lantern, 75 Hampstead Road, London, NW1 2PL Registered Company Number 05334580.



This paper is
100% recyclable