



## Blissett Street, SE10

£330,000

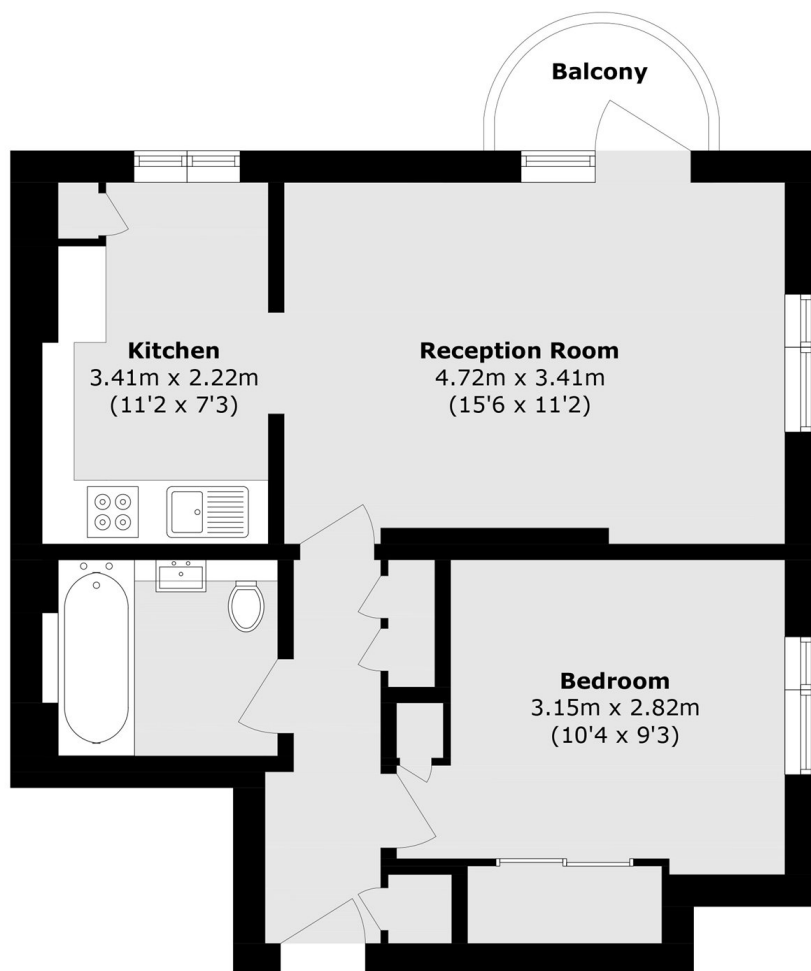
Representing an ideal first time purchase this top floor purpose built flat has amazing city views and is offered with the benefit of no onward chain. The accommodation briefly comprises, double bedroom, bathroom, good size living room with access to private balcony, separate kitchen and ample storage.

Blissett Street is a prime road located moments from Greenwich station and DLR as well as all the amenities on offer from independent shops and bars, to large chain brands all located within a short walk away. Royal Greenwich park is just a 5 minute walk away.

### Features

- Chain Free
- Amazing City Views
- Purpose Built
- Ideal First Time Purchase
- Private Balcony
- Sought After Location

Blissett Street,  
London, SE10



**Fifth Floor**

Total area (approx.): 45.8 sq. m (493.0 sq. ft)

Balcony area (approx.): 2.0 sq. m (21.5 sq. ft)