



KELMAN CLOSE, SW4

£700,000

- Maisonette
- Three bedrooms
- Share of freehold
- Off-street parking
- Private garden
- EPC Rating: TBC





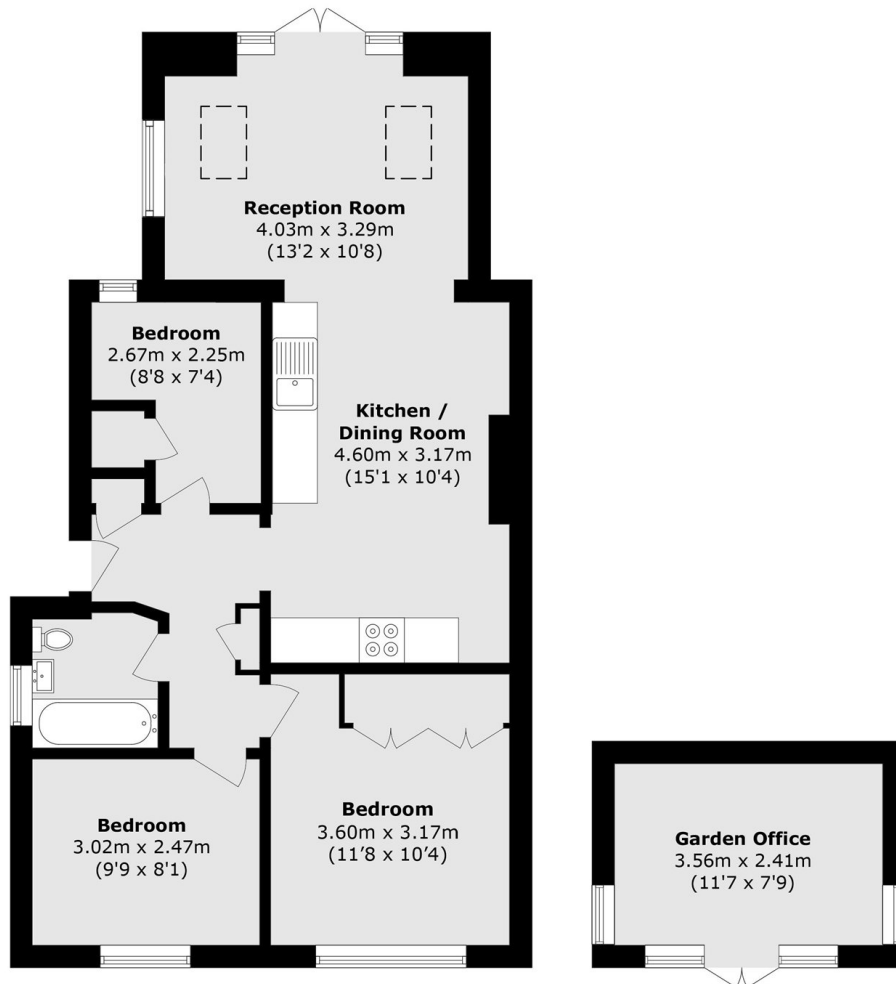
ABOUT THE HOME

A well presented three bedroom ground floor maisonette situated in a quiet cul-de-sac near Clapham High Street. This property offers a variety of benefits including off street parking, garage, a private garden and an outbuilding suitable as a work from home space/ home gym.

Kelman Close is situated just off of Union Road; a short walk to Clapham High Street with its shops, restaurants, bars and other amenities. Clapham North (Northern line) Underground, Clapham High Street (Windrush line) Overground and Stockwell (Victoria line) Underground stations are approximately half a mile, while numerous bus routes to the City and West End run near by.







Total area (approx.): 72.7 sq. m (782.5 sq. ft)

JACKSONS CLAPHAM

73 Abbeville Road, London,
SW4 9JN

Sales: 020 8487 3177

Lettings: 020 8487 3178

Energy Rating: We aim to make our particulars both accurate and reliable. However they are not guaranteed; nor do they form part of an offer or contract. If you require clarification on any points then please contact us, especially if you're traveling some distance to view. Please note that appliances and heating systems have not been tested and therefore no warranties can be given as to their good working order.