



**Connells**

Clyde Mews  
Pensnett Brierley Hill



### Property Description

Clyde Mews is a small cul-de-sac off Corbyns Halls Road, Pensnett. There are ample green spaces nearby for dog walks or play areas. Russell Halls hospital is just up the road, as well as a handy Budgens convenience store and numerous other shops and amenities. There are schools very close by. A particularly nice feature is the mature garden with raised beds with privacy provided by numerous trees.

### To The Front

Tarmac driveway with lawn to side. Leads to door to entrance hall and utility.

### Hallway

Double glazed front door leads to hallway with radiator, wood effect laminate flooring, stairs off to first floor landing and doors to wc, kitchen, cupboard and lounge.

### Cloakroom/Wc

Double glazed window to side elevation, wash hand basin and low flush wc.

### Lounge

Double glazed window to front elevation, radiator, wood effect laminate flooring, fireplace and doorway to;

### Dining Room

Double glazed window to rear elevation, radiator, wood effect laminate flooring and door to;

### Kitchen

Double glazed window to rear elevation, a range of wall and base units. Work surfaces incorporating sink unit. Space for cooker with extractor above. Provision for further domestic appliances and door to;

### Lobby

Double glazed window to rear elevation and door to;

### Utility

Double glazed window to rear elevation and door to front and rear elevations.

### Landing

Loft access, over stairs storage cupboard, handy stairlift if required and doors to;

### Bedroom One

Double glazed window to rear elevation, radiator and fitted wardrobes.

### Bedroom Two

Double glazed window to rear elevation and radiator.

### Bedroom Three

Double glazed window to front elevation and radiator.

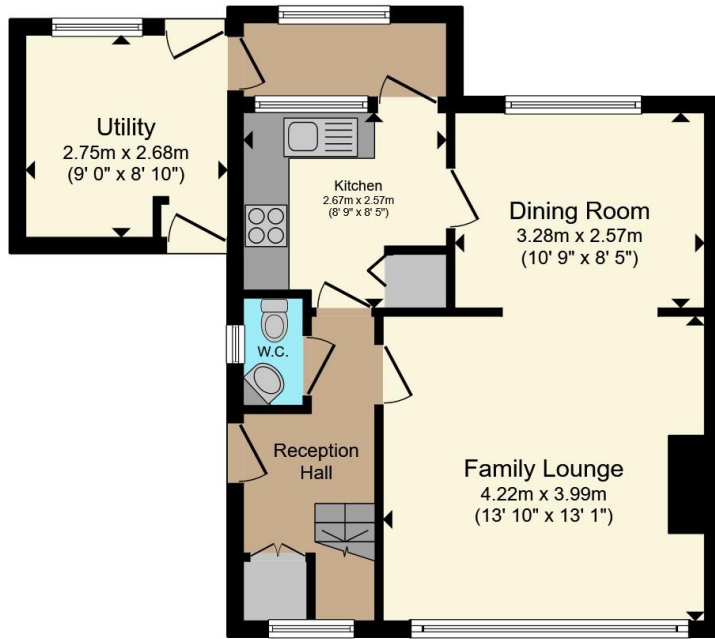
### Shower Room

Double glazed window to front elevation and towel rail radiator. Shower cubicle, wash hand basin and low flush wc.

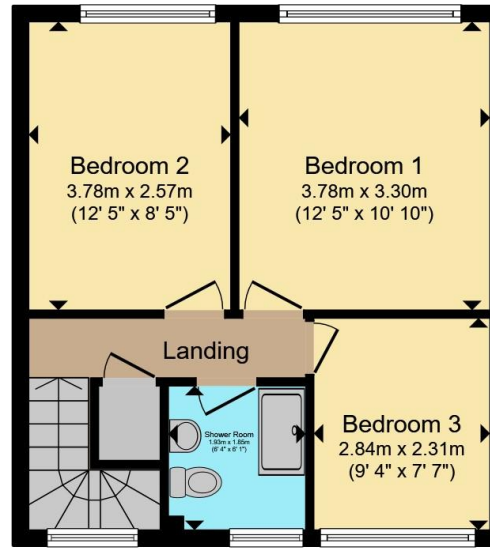
### Rear Garden

Fully enclosed rear garden, mostly paved with gravel and mature flower/shrub borders. Garden shed





**Ground Floor**



**First Floor**



Total floor area 91.3 m<sup>2</sup> (983 sq.ft.) approx

This floor plan is for illustrative purposes only. It is not drawn to scale. Any measurements, floor areas (including any total floor area), openings and orientation are approximate. No details are guaranteed, they cannot be relied upon for any purpose and they do not form part of any agreement. No liability is taken for any error, omission or misstatement. A party must rely upon its own inspection(s). Powered by [www.propertybox.io](http://www.propertybox.io)



To view this property please contact Connells on

**T 01384 374 545**  
**E [stourbridge@connells.co.uk](mailto:stourbridge@connells.co.uk)**

11B St. Johns Road  
 STOURBRIDGE DY8 1EJ

EPC Rating: D Council Tax  
 Band: B

**view this property online [connells.co.uk/Property/SBR313306](http://connells.co.uk/Property/SBR313306)**

Tenure: Freehold



1. MONEY LAUNDERING REGULATIONS Intending purchasers will be asked to produce identification documentation at a later stage and we would ask for your co-operation in order that there will be no delay in agreeing the sale. 2. These particulars do not constitute part or all of an offer or contract. 3. The measurements indicated are supplied for guidance only and as such must be considered incorrect. Potential buyers are advised to recheck measurements before committing to any expense. 4. We have not tested any apparatus, equipment, fixtures, fittings or services and it is in the buyers interest to check the working condition of any appliances.

Connells Residential is registered in England and Wales under company number 1489613, Registered Office is Cumbria House, 16-20 Hockliffe Street, Leighton Buzzard, Bedfordshire, LU7 1GN. VAT Registration Number is 500 2481 05.

**See all our properties at [www.connells.co.uk](http://www.connells.co.uk) | [www.rightmove.co.uk](http://www.rightmove.co.uk) | [www.zoopla.co.uk](http://www.zoopla.co.uk)**

Property Ref: SBR313306 - 0007